



Starting the Day Right II

Best Practices for Increasing School
Breakfast Participation in Utah Schools

School Years:
2014-2015 | 2015-2016 | 2016-2017



TBAU

TABLE OF CONTENTS

Contents

Overview	1
Alternative School Breakfast Service Models	3
Offering School Breakfast at No Charge to All Students	4
Marketing the School Breakfast Program	6
Serving Up Success in Granite School District: A Case Study	8
School Breakfast Participation Data Tables	11
Resources	42
References	44





Acknowledgments

This report was prepared by Marti Woolford, with assistance from Casey Coombs, Lori Spruance, Nathan Stokes, Kimberly Loveland, Tammi Walker, and Adrian Glover. This report was designed by Michael Wernert.

The Utah Breakfast Expansion Team (UBET) was formed in 2014 in response to Utah's consistently low participation in the School Breakfast Program (SBP). UBET works to increase participation in SBP among low income students. UBET is a collaboration of Utahns Against Hunger, Utah State Board of Education Child Nutrition Programs, Utah State University Extension–Food Sense (SNAP-Ed), Utah State University Extension–Salt Lake County, Dairy Council of Utah Nevada, Utah Department of Health-Healthy Living Through Environment, Policy & Improved Clinic Care Program, Brigham Young University–Nutrition, Dietetics, and Food Science and Health Sciences departments, School Nutrition Association Utah, Canyons School District and Granite Education Association–NEA Healthy Futures.

Utahns Against Hunger and UBET gratefully acknowledge major support for this report from Partners for Breakfast in the Classroom, an initiative funded by the Walmart Foundation.



Utah State University is an affirmative action/equal opportunity institution.

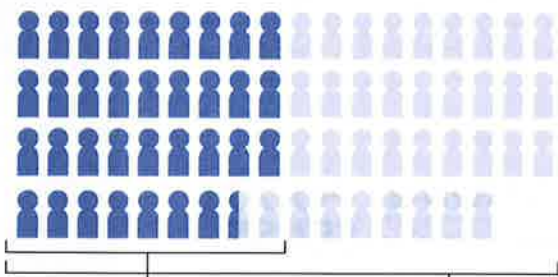
OVERVIEW

In 2016, the Utah Breakfast Expansion Team (UBET) released *Starting the Day Right: Best Practices for Increasing School Breakfast Participation in Utah Schools*.¹ This report included school breakfast participation data from school year 2014-2015.² At the time of its release, the School Breakfast Program (SBP) was severely underutilized, with only 34.3 low-income Utah students (students who qualify for free or reduced-price lunch) participating in the program for every 100 low-income students who participated in the National School Lunch Program (NSLP).³ When SBP participation was compared to NSLP participation among low-income students statewide for school year 2014-2015, Utah was the lowest-performing state in the nation for school breakfast participation.³ The Food Research & Action Center (FRAC) has established that a successful SBP is one that reaches 70 low-income students for every 100 low-income students who participate in the NSLP.

Participation in SBP has improved since the release of *Starting the Day Right*. In school year 2015-2016, 38.1 low-income students ate breakfast at school, an increase of 3.8 percent from the previous school year.⁴ Much of this progress was driven by Granite School District, which added roughly 2,800 students to SBP during the 2015-2016 school year.⁵ This increase can be attributed to Granite expanding the number of schools offering breakfast in the classroom (BIC) from 19 schools in 2014-2015 to 32 schools the following school year.⁵ (See "Serving Up Success in Granite School District: A Case Study".)

During the 2016-2017 school year, statewide participation in SBP rose slightly to 39 students eating breakfast at school for every 100 who ate lunch.⁶ If Utah were to reach the 70 low-income students for every 100 goal established by FRAC, an additional 45,000 students would have started the day with school breakfast in school year 2016-2017.⁷ Furthermore, Utah

School Breakfast Underutilized in Utah



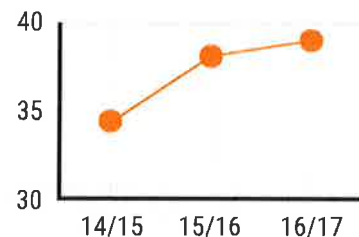
During the 2016-2017 school year 39 low-income Utah students participated in the program for every 100 low-income students who participated in the NSLP.

A successful SBP is one that reaches 70 low-income students for every 100 low-income students who participate in the NSLP.



45,000

additional students would be starting the day with breakfast if Utah reached the 70-student benchmark.



Increase in participation per 100 low-income students.

\$13.2 MILLION

in additional funding if Utah reached the 70-student benchmark.

would receive an additional \$13.2 million dollars in annual federal reimbursement funding.⁷ (See “School Breakfast Participation Data Tables” for data specific to individual schools and districts.) As more Utah schools make breakfast a part of the school day, school breakfast participation will continue to rise.

Participating in the SBP is beneficial to all students, not just low-income students. The SBP has health benefits such as obesity prevention and increased consumption of fruits, milk, and vegetables.⁸ Research shows that children who eat breakfast at school – closer to the start of the school day and test-taking time – perform better on standardized tests than those who skip breakfast or eat breakfast at home.⁹ Correspondingly, when less time passes between breakfast consumption and class, students demonstrate improved academic achievement.⁹ In Utah, the majority of schools offer breakfast, but serve it in the school cafeteria before the school day starts. This creates several barriers that can result in low participation. For example, kids are required to arrive at school early in order to participate, but busy morning schedules at home, as well as school bus schedules may prevent them from arriving in time to eat. When children are able to arrive to school in time to eat they may still face barriers; like having to choose between eating or playing and socializing with friends; or facing the stigma of eating breakfast in the cafeteria where “only the poor kids”

eat breakfast.¹⁰ It is important to note that low participation in SBP does not always correspond with high rates of breakfast consumption at home prior to school. When school breakfast is made a part of the school day, known as breakfast after the bell, there are dramatic increases in participation. (See the “School Breakfast Participation Data Tables.”) Rather, increasing SBP participation allows kids who would otherwise arrive at school hungry – due to lack of family resources or other barriers – to start the day well-nourished and ready to learn.

This report provides valuable SBP information for schools and districts, including a summary of alternative breakfast models for increasing program participation, which many schools in Utah are starting to implement. The section, “Serving Up Success in Granite School District: A Case Study,” shared later in this report, details how implementing BIC can dramatically increase participation in SBP. The “School Breakfast Participation Data Tables” section provides 3 years of school breakfast participation data, alternative breakfast models schools have implemented, potential federal reimbursements funding, and the school breakfast participation rank for each district. The Resources section provides best practices for implementing alternative breakfast models. Lastly, the School Breakfast Expansion Grant section provides information on grant programs that can help cover the cost of implementing alternative school breakfast models.



ALTERNATIVE BREAKFAST MODELS



Breakfast in the Classroom (BIC)

With this model, breakfast is delivered to the classroom by school nutrition staff or designated students. It is then served either by the teacher, or each student can pick up a meal before taking a seat at the start of the school day. BIC works best in elementary schools where students start the day in the same classroom with the same teacher each day, making delivery, counting, and claiming more streamlined for teachers and school nutrition staff.



"Grab and Go" / "Grab and Go" to the Classroom

This model uses key components of school breakfast, conveniently packaged, so students can grab a reimbursable meal quickly from the cafeteria line or from carts elsewhere on school grounds. Depending on the school's rules, students can eat in the classroom, or elsewhere on campus.



Breakfast after First Period or "Second Chance Breakfast"

This model allows students time after their first period class to obtain breakfast from the cafeteria or carts in the hallway, which they can eat in the classroom or cafeteria. Computerized systems ensure that children receive only one breakfast each day.



Breakfast on the Bus

Bus schedules can make it hard for students to participate in the SBP when it is served in the cafeteria before the school day starts. Breakfast on the bus makes the most of students' morning bus ride, especially on longer bus rides that might be up to an hour or more. In this method food is stored in temperature controlled containers and served to students as they board the bus.



Breakfast Vending

Breakfast vending allows students to access a nutritious breakfast from a vending machine. Vending machines can be set up to offer free and reduced-priced options by linking vending machines to the school's point of sale (POS) system; students can then use their student ID or PIN to pay without cash.



OFFER SCHOOL BREAKFAST AT NO CHARGE TO ALL STUDENTS



Universal Free Breakfast

When Universal Free Breakfast is offered, breakfast is available at no charge to all students, regardless of their household income. For schools with high (≥ 70 percent) free/reduced meal eligibility, offering breakfast for free to all students may be a financially viable way to ensure more children access a healthy breakfast. Any service model can be used with universal breakfast.



Community Eligibility Provision (CEP)

CEP allows qualifying schools to offer breakfast and lunch at no charge to all students, while eliminating the traditional school meal application process. Thousands of schools across the country have successfully implemented this option and are seeing the many benefits of ensuring that all students have access to healthy school meals. Any district, group of schools in a district, or individual school with 40 percent or more “identified students”—children eligible for free school meals who are already identified by other means than an individual household application—can choose to participate in CEP. The Utah State Board of Education provides an annual notification of potentially eligible schools and information is posted online at <https://schools.utah.gov/data/reports> under the CNP/NSLP tab.

Benefits of the CEP (Adapted from the Food Research & Action Center’s “FACTS: Community Eligibility Provision”¹¹):

- **Lessens administrative work**—schools no longer have to collect and verify school meal applications and can focus on feeding children.
- **Increases participation**— a USDA study of schools that had just



piloted CEP found that it increased breakfast participation by 9.4 percent and lunch participation by 5.2 percent.

- **Facilitates implementation of alternative breakfast service models**—when schools don't have to collect fees or count each meal served by fee category, it simplifies implementation of breakfast in the classroom and "Grab and Go" service models, which can boost participation further.
- **Improves the financial viability of school nutrition programs**—when participation increases, school districts can take advantage of economies of scale, and reinvest additional revenue to improve nutrition quality and provide staff training.
- **Eliminates unpaid meal fees**—when all children eat at no charge, the school district does not have to collect unpaid fees from families.



Provisions 2 and 3¹²

Provisions 2 and 3 are a Federal School Breakfast Program (and National School Lunch Program) option for schools to reduce the paperwork burden and simplify the logistics of operating school meal programs. Under both provisions, institutions may provide free meals claimed

by free and reduced percentages established in a base year. This minimizes the burden of collecting applications and tracking and verifying school meal data every year.

Under Provision 2 and 3:

- All students receive free meals, regardless of family income level.
- Schools collect applications, record and track meal categories, and conduct meal verifications once every four years, at most, leading to a reduction in administrative tasks for food service staff. Lunch tickets, PIN numbers, and ID cards for breakfast are no longer necessary since all students eat for free.
- The school pays the difference between the cost of providing the meals at no charge to all students and the amount of federal and state reimbursement for those meals. In most cases, the administrative savings and increased meal participation offset the added cost of providing Universal Free Breakfast.
- Provisions 2 and 3 can be done with breakfast or lunch, by an individual school or district-wide. Experience has shown that schools save more in administrative and time costs if both provisions are used for breakfast and lunch.¹²



MARKETING THE SCHOOL BREAKFAST PROGRAM



Outreach

Another way to increase breakfast participation is to make sure parents are aware that their child's school participates in the SBP. There are many ways to promote SBP but, according to the USDA¹³, strategic and effective outreach efforts will have the biggest impact on awareness and participation:

- **Use bright colored paper** when including information about school breakfast in the packet of materials that goes to parents at the beginning of the school year.
- **Feature easy-to-access and easy-to-find information** about school breakfast on the school website that highlights the fact that qualifying for free or reduced-price meals includes breakfast, not just lunch.
- **Promote breakfast frequently** in emails, robo-calls (automated voicemails), on school district radio/TV stations when available, social media outlets such as Facebook and Twitter, and other communications with parents and students.
- **Social media** is a great way to get the word out about school meals, especially at the beginning of the school year and to promote activities like National School Lunch Week (October) and National School Breakfast Week (March).
- **Mail postcards** to families to encourage participation.
- **Conduct promotional activities** (e.g., contests, celebrity appearances, special themes) that encourage students to participate.



MAIL
POSTCARDS



FORM STUDENT
NUTRITION
COMMITTEES



USE A
MENU BOARD

> National School Breakfast Week is held in March and National School Lunch Week is held in October; these are great times to conduct a promotional activity and create special menu options.

- **Enlist teachers and principals** to encourage students to participate by providing information about the SBP and effective strategies (e.g. modeling good eating behaviors, scheduling before-school activities in the cafeteria during breakfast). See the Nudge strategy below for more information.
- **Provide school breakfast participation rates to principals**, as they are often unaware of how few students participate in school breakfast (see the section, "School Breakfast Participation Data Tables" of this report for participation rates).
- **Inform teachers** by providing SBP in-service trainings to make sure they know about the academic benefits of participation, barriers to participation, and ways teachers can help encourage students to participate in breakfast.
- **Write a press release** announcing the implementation of a new school breakfast service model.
- **Notify the Utah State Board of Education** if your school or district implements an alternative school breakfast.
- **Form student nutrition committees** to taste new food items and promote the program among peers (see "Resources" section of this report for more information).
- **Enlist students** in creating a marketing campaign promoting the SBP.
 - > For example, enlist students to create a video to help market your "Grab-and-Go" breakfast cart or vending machine. Involving students is a great way to bring attention to your breakfast program.



Nudge

Another great way to increase participation in the SBP is the "nudge" method. There can be a lot of distractions when students arrive to school like playing and/or socializing. Nudges are subtle acts of positive reinforcement and indirect suggestions that try to influence a student's behavior¹⁴ and are a great way to remind kids to eat breakfast at



school. Below are a few examples of successful nudge techniques suggested by No Kid Hungry:

- **Have school staff greet students** as they exit the school bus or enter the school and encourage them to go to the cafeteria to eat.
- **Have school staff stand in a prominent entrance** in the school and ask students if they ate breakfast yet and remind that there is breakfast in the cafeteria.
- **Have a student greet students** with a sign that reminds them that breakfast is being served in the cafeteria.



Smarter Lunchroom Strategies¹⁵

Another great way to increase participation in the SBP is to make a few small changes to how the program is promoted at school.

- **Use a menu board** to promote the featured item of the day and/or the next day's featured item.
- **Use creative descriptive names** for featured items.
- In the cafeteria, **display breakfast items so they are inviting and easy to see.**
- **Give great customer service.** Encourage staff to smile and greet students as they enter the service line and throughout the whole breakfast service.

SERVING UP SUCCESS IN GRANITE SCHOOL DISTRICT: A CASE STUDY



Photos: Granite School District

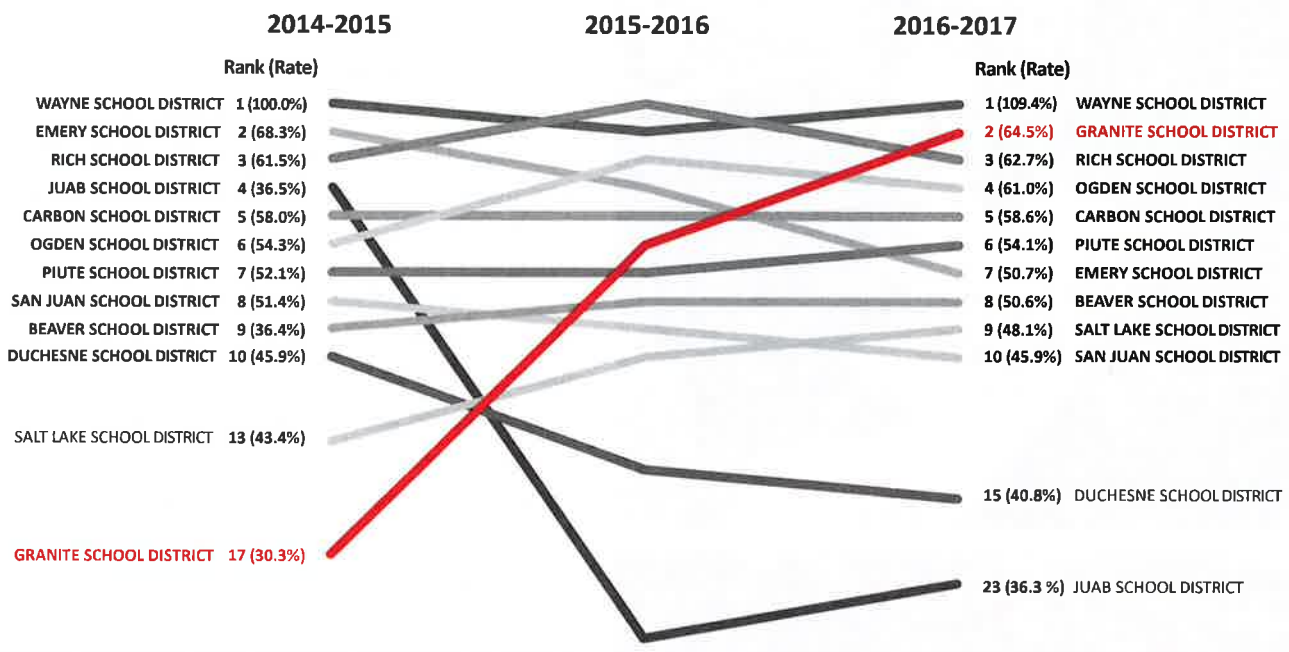
In 2013, over 50 percent of students in the Granite School District qualified for free or reduced-price lunch, but few were participating in the School Breakfast Program (SBP). At the same time, principals were hearing from teachers that more and more students were coming to school hungry. In response, teachers were using their own money to buy snacks to have in their classroom to give to students.

In school year 2013-2014, the Utah State Board of Education released an application for grants to increase participation in SBP throughout the state. Granite School District applied and received one of these grants to implement a breakfast in the classroom (BIC) pilot in April 2014 at Stansbury Elementary School. At that time, just over 84 percent of students at Stansbury qualified for free or reduced-price lunch, but only 21.7 percent were eating breakfast at school. The pilot was so successful that BIC continued in school year 2014-2015 and by the end of the school year, 91.3 percent of students were participating in BIC. Participation was not the only improvement; the principal at Stansbury noted improvements in behavior and academics as well. In addition, teachers reported that the 15 minutes required to manage the program in the morning was offset by gaining back approximately 45 minutes of cognitive time that was often lost due to hunger prior to the implementation of BIC.

Stansbury Elementary School was not the only school in the district with high numbers of students qualifying for

free or reduced-price lunch and low participation in the SBP. District-wide student participation in this critical program was only around 32 percent. BIC was rolled out in 18 schools in school year 2014-2015, 13 more schools added the program in school year 2015-2016, and two more schools added BIC in school year 2016-2017, resulting in a total of 34 schools offering BIC in Granite School District. Additionally, in school year 2016-2017, the district increased the number of schools that offered Universal Free breakfast from 0 to 30. All of this effort has paid off. Participation in the district in SBP jumped from 32 percent to 60.8 percent by May 2017. This equates to nearly 7,000 more students starting the day fed and ready to learn. Higher participation rates have also led to the district receiving an additional \$965,000 dollars in federal reimbursements from the USDA.

Granite School District moved from being ranked 17th in SBP participation to being ranked 2nd in SBP participation.



Note: Rates shown as the percentage of students qualifying for free or reduced meals that participate in their school district’s School Breakfast Program.

The Utah Breakfast Expansion Team (UBET) met with the Food Service Director and the Central Kitchen Production Manager at Granite School District in February 2018 to learn from their experiences implementing BIC in the district.

When asked what advice they can share with schools and districts who want to implement BIC, Granite suggests starting after a natural break in the school year, like after the holiday or spring break, to avoid the inherent stress associated with the start of a new school year.

They also emphasized the importance of being organized at both the district and school level. One way they did this was to

create an implementation protocol for schools that switch to BIC. The protocol goes over the importance of getting support from teachers, parents, custodians, and kitchen staff before implementing BIC.

Granite also suggests meeting with stakeholder groups in the beginning of the process, such as the teacher association, the school community council, and the PTA. Granite suggests creating a fact sheet to hand out at these meetings. This helps to address concerns that teachers or parents have before the program is implemented.

After gaining support from stakeholders, their next suggestion is to think about food packaging. They strongly suggest staying away from food items that could spill and use items that are easy to open. Avoid the potential for messes from the beginning and the program will be a success!

When it comes to their breakfast menu, Granite offers hot and cold breakfast, depending on the day. They stated that with good planning, it is possible to serve either hot or cold breakfast. Granite uses metro security carts, as seen in the photo, to transport food to each classroom. These carts carry either warming bags or coolers, depending on the breakfast offering that day, and make transportation easy and efficient.

Their last piece of advice? Pilot new foods and do taste tests at one school before offering district wide. This will help a school know if kids are going to like a new food before purchasing it in a bulk quantity.

Visit <https://www.graniteschools.org/foodservices/> to learn more about Granite School District's Child Nutrition Program.



Photo: Granite School District



SCHOOL BREAKFAST PARTICIPATION DATA TABLES

About the Data

The Utah State Board of Education provided the free and reduced-price meal raw data and meal counts used in the report.^{2,5,7} All data are from school years 2014–2015, 2015–2016, and 2016–2017. A memorandum of understanding between the Utah State Board of Education and Utahns Against Hunger was approved by the board in October and signed by the USBE Superintendent on 10/16/17. School breakfast participation rates were analyzed using the Food Research & Action Center’s School Breakfast Calculator.^{16,17,18}

All data collected were self-reported from school districts. Qualitative data are collected annually at the beginning of each school year and may not be updated when districts make changes after the beginning of the school year. Eligibility data are based on the last operating day of October¹⁹ for all schools, which may not be representative of the whole school year for some schools. Enrollment data used in calculations of average daily participation may include some students who may not have access to SBP and/or NSLP (for example, split kindergarten sessions that are only in session after lunch). Data collection on alternative service models began during school year 2014–2015 and may not be representative of actual service models during that school year. Where the data were unavailable in the examined school year, data from 2015–2016 were used. All school breakfast model data for school year 2016–2017 was self-reported by the sponsor. Information is collected as part of the annual renewal process. Each program sponsor completed a site information sheet.

Those completing the site information sheet selected from a drop-down menu if the site is providing a traditional, “Grab and Go,” BIC, breakfast after the bell/second chance breakfast, breakfast on the bus or vending machine breakfast. There is also a text box for the user to enter another method or provide additional information. Prior to school year 2017–2018, the Utah State Board of Education did not ask for a reason if breakfast was not offered. Some SBP participation data may be over 100 percent. This may be due to school breakfast being offered on Friday, while lunch is not, due to early out day. It may also be due to schools implementing BIC and Universal Free Breakfast, resulting in higher breakfast participation.

Several school districts participated in a school breakfast expansion grant provided by Utah State Board of Education in 2014–2015. These districts included: Alpine, Beaver, Canyons, Carbon, Emery, Granite, Jordan, Kane, Nebo, North Sanpete, Ogden, Provo, Tooele, Washington, and Weber. It is important to note that districts followed different implementation timelines under this grant, e.g., some districts may not have implemented the breakfast expansion project funded through this grant as of the last operating day in October¹⁹ of that school year, and others may be capturing increased participation in SBP as a result of earlier implementation. Charter schools (unless the charter school receives school meals from one of the 41 large school districts), alternative schools, residential childcare centers, and specialty schools were not included in the analysis.

Data Key

% F/R:

Percentage of students in school or district eligible for free or reduced-price (F/R) meals based on reports from October 2014, October 2015, and October 2016.

Rank:

The order, from highest participation to lowest participation that schools and districts rank in school breakfast participation.

Alternative Service Models:

The alternative service model a school or district used to provide school breakfast during the 2014–2015, 2015–2016, and 2016–2017 school years is listed here. If your district information is incorrect, please notify the Utah State Board of Education Child Nutrition Programs.

N/A:

Indicates no SBP operating at the school.

***:**

Indicates schools that received a Breakfast Expansion grant from the Utah State Board of Education in 2013.

****:**

In Table 1, a zero is used for school year 2016–2017 for Wayne School District. This is because the district met the goal of at least 70 percent of students on a free or reduced-price meal plan participating in SBP for every 100 students who ate lunch on a free or reduced-price meal plan. Meeting this goal resulted in the district receiving the full federal reimbursement money available to them.

% F/R Students Participating in SBP:

The number of students on a free or reduced-price (F/R) meal plan that ate school breakfast each day for every 100 students on a free or reduced-price plan that participated in lunch.

Additional Students Who Could Be Eating Breakfast:

Number of additional students who would receive school breakfast at a free or reduced-price rate if the school was reaching 70 students at breakfast for every 100 students who received lunch at a free or reduced-price rate. The Food Research & Action Center has established that a successful School Breakfast Program (SBP) is one that reaches 70 low-income students for every 100 low-income students who participate in the National School Lunch Program.

Offer Breakfast at No Charge:

The method a school or district used to offer school breakfast to all students, free of charge, is listed for school years 2014–2015, 2015–2016, and 2016–2017. If your district information is incorrect, please notify the Utah State Board of Education Child Nutrition Programs.

Federal Funding Schools Could Be Receiving:

The amount of additional federal dollars schools and districts would have received in the 2014–2015, 2015–2016, and 2016–2017 school years if students who are on a free or reduced-price meal plan participating in school lunch also participated in the district's SBP.

Figure 1. Utah School Breakfast Participation Rankings and Rates from School Year 2014-2015 to School Year 2016-2017.

School District	Rank (% Free/Reduced Students Participating in SBP)			Year-to-Year Trend (% F/R Students Participating in SBP by Year)
	SY 2014-15	SY 2015-16	SY 2016-17	
WAYNE SCHOOL DISTRICT	1 (100.0)	2 (67.1)	1 (109.4)	
GRANITE SCHOOL DISTRICT	17 (30.3)	6 (44.0)	2 (64.5)	
RICH SCHOOL DISTRICT	3 (61.5)	1 (59.8)	3 (62.7)	
OGDEN SCHOOL DISTRICT	6 (54.3)	3 (57.7)	4 (61.0)	
CARBON SCHOOL DISTRICT	5 (58.0)	5 (60.8)	5 (58.6)	
PIUTE SCHOOL DISTRICT	7 (52.1)	7 (56.9)	6 (54.1)	
EMERY SCHOOL DISTRICT	2 (68.3)	4 (57.8)	7 (50.7)	
BEAVER SCHOOL DISTRICT	9 (36.4)	8 (58.1)	8 (50.6)	
SALT LAKE SCHOOL DISTRICT	13 (43.4)	10 (44.6)	9 (48.1)	
SAN JUAN SCHOOL DISTRICT	8 (51.4)	9 (52.8)	10 (45.9)	
NO SANPETE SCHOOL DISTRICT	18 (34.3)	11 (46.8)	11 (45.3)	
TINTIC SCHOOL DISTRICT	14 (40.8)	19 (36.7)	12 (44.1)	
CANYONS SCHOOL DISTRICT	34 (22.0)	12 (28.4)	13 (42.7)	
LOGAN SCHOOL DISTRICT	11 (40.3)	13 (42.3)	14 (40.9)	
DUCHESNE SCHOOL DISTRICT	10 (45.9)	14 (45.9)	15 (40.8)	
BOX ELDER SCHOOL DISTRICT	15 (43.5)	15 (46.4)	16 (39.5)	
WASATCH SCHOOL DISTRICT	21 (35.4)	24 (35.8)	17 (38.5)	
MILLARD SCHOOL DISTRICT	22 (33.0)	16 (37.6)	18 (38.4)	
SO SANPETE SCHOOL DISTRICT	20 (19.6)	18 (20.3)	19 (37.8)	
DAGGETT SCHOOL DISTRICT	25 (36.5)	27 (36.8)	20 (37.4)	

NOTE: Rankings weighted by district size.

Figure 1. continued

School District	Rank (% Free/Reduced Students Participating in SBP)			Year-to-Year Trend (% F/R Students Participating in SBP by Year)
	SY 2014-15	SY 2015-16	SY 2016-17	
IRON SCHOOL DISTRICT	16 (37.5)	21 (36.8)	21 (37.2)	
PROVO SCHOOL DISTRICT	19 (35.2)	17 (36.3)	22 (36.8)	
JUAB SCHOOL DISTRICT	4 (36.5)	25 (35.0)	23 (36.3)	
GRAND SCHOOL DISTRICT	30 (36.1)	20 (38.0)	24 (35.1)	
TOOELE SCHOOL DISTRICT	12 (43.5)	26 (37.6)	25 (35.0)	
SEVIER SCHOOL DISTRICT	27 (28.9)	23 (30.1)	26 (34.7)	
UINTAH SCHOOL DISTRICT	35 (32.7)	32 (33.0)	27 (32.6)	
NEBO SCHOOL DISTRICT	26 (32.9)	30 (31.7)	28 (32.4)	
WASHINGTON SCHOOL DISTRICT	31 (33.6)	29 (33.4)	29 (32.3)	
KANE SCHOOL DISTRICT	23 (46.5)	22 (46.5)	30 (32.2)	
WEBER SCHOOL DISTRICT	29 (31.4)	31 (33.1)	31 (31.3)	
ALPINE SCHOOL DISTRICT	33 (29.3)	36 (28.6)	32 (30.8)	
DAVIS SCHOOL DISTRICT	32 (28.8)	34 (28.3)	33 (30.6)	
MURRAY SCHOOL DISTRICT	37 (34.6)	35 (32.2)	34 (30.0)	
GARFIELD SCHOOL DISTRICT	28 (34.0)	38 (7.2)	35 (29.3)	
PARK CITY SCHOOL DISTRICT	36 (30.9)	37 (28.4)	36 (27.8)	
NO SUMMIT SCHOOL DISTRICT	24 (34.3)	33 (46.8)	37 (27.5)	
JORDAN DISTRICT NUTRITION SERVICES	38 (18.8)	39 (18.1)	38 (25.1)	
CACHE SCHOOL DISTRICT	39 (21.0)	40 (22.3)	39 (20.7)	
SO SUMMIT SCHOOL DISTRICT	41 (6.3)	28 (29.1)	40 (16.9)	
MORGAN SCHOOL DISTRICT	40 (5.1)	41 (8.3)	41 (16.8)	

NOTE: Rankings weighted by district size.

Table 1. Federal Funding Utah School Districts Could Be Receiving.

School District	SY 2014-2015	SY 2015-2016	SY 2016-2017
ALPINE SCHOOL DISTRICT	\$1,428,673	\$1,398,426	\$1,414,319
BEAVER SCHOOL DISTRICT	\$29,085	\$28,020	\$33,210
BOX ELDER SCHOOL DISTRICT	\$287,420	\$269,480	\$279,088
CACHE SCHOOL DISTRICT	\$461,902	\$473,587	\$482,819
CANYONS SCHOOL DISTRICT	\$700,029	\$607,055	\$613,647
CARBON SCHOOL DISTRICT	\$47,746	\$52,285	\$41,813
DAGGETT SCHOOL DISTRICT	\$3,050	\$2,980	\$2,209
DAVIS SCHOOL DISTRICT	\$1,410,300	\$1,403,212	\$1,451,642
DUCHESNE SCHOOL DISTRICT	\$86,097	\$106,302	\$115,672
EMERY SCHOOL DISTRICT	\$7,169	\$26,704	\$39,383
GARFIELD SCHOOL DISTRICT	\$25,763	\$35,116	\$34,607
GRAND SCHOOL DISTRICT	\$53,786	\$50,103	\$55,799
GRANITE SCHOOL DISTRICT	\$2,382,472	\$1,631,745	\$1,416,651
IRON SCHOOL DISTRICT	\$292,166	\$269,816	\$300,451
JORDAN DISTRICT NUTRITION SERVICES	\$900,088	\$901,598	\$941,075
JUAB SCHOOL DISTRICT	\$57,409	\$66,220	\$66,053
KANE SCHOOL DISTRICT	\$38,092	\$38,399	\$44,576
LOGAN SCHOOL DISTRICT	\$199,654	\$193,036	\$202,966
MILLARD SCHOOL DISTRICT	\$115,884	\$104,040	\$105,830
MORGAN SCHOOL DISTRICT	\$17,692	\$29,494	\$30,054
MURRAY SCHOOL DISTRICT	\$170,076	\$177,175	\$185,409
NEBO SCHOOL DISTRICT	\$747,332	\$790,438	\$775,281
NO SANPETE SCHOOL DISTRICT	\$96,546	\$88,676	\$89,226
NO SUMMIT SCHOOL DISTRICT	\$22,306	\$26,568	\$32,087
OGDEN SCHOOL DISTRICT	\$374,655	\$347,651	\$325,337
PARK CITY SCHOOL DISTRICT	\$84,893	\$89,279	\$87,511
PIUTE SCHOOL DISTRICT	\$12,421	\$8,499	\$8,245
PROVO SCHOOL DISTRICT	\$450,575	\$440,835	\$436,266
RICH SCHOOL DISTRICT	\$5,453	\$4,185	\$5,316
SALT LAKE SCHOOL DISTRICT	\$908,539	\$836,156	\$726,609
SAN JUAN SCHOOL DISTRICT	\$117,297	\$118,827	\$127,217
SEVIER SCHOOL DISTRICT	\$156,169	\$147,078	\$154,524
SO SANPETE SCHOOL DISTRICT	\$77,010	\$73,501	\$69,334
SO SUMMIT SCHOOL DISTRICT	\$17,405	\$13,458	\$31,925
TINTIC SCHOOL DISTRICT	\$4,784	\$5,119	\$3,076
TOOELE SCHOOL DISTRICT	\$354,958	\$382,435	\$384,976
UINTAH SCHOOL DISTRICT	\$214,593	\$245,304	\$269,612
WASATCH SCHOOL DISTRICT	\$136,307	\$142,868	\$135,478
WASHINGTON SCHOOL DISTRICT	\$844,817	\$844,326	\$897,830
WAYNE SCHOOL DISTRICT	NA	\$1,771	\$0**
WEBER SCHOOL DISTRICT	\$800,853	\$786,994	\$820,021
TOTALS	\$14,112,381	\$13,230,741	\$13,237,144

Table 2. Number of Alternative Breakfast Models and Breakfast at No Charge in Utah School Districts.

SCHOOL DISTRICT	SY 2014-15	SY 2015-16	SY 2016-17	SY 2014-15	SY 2015-16	SY 2016-17
	Breakfast at No Charge			Alternative Service Model		
ALPINE SCHOOL DISTRICT	0	0	0	4	4	2
BEAVER SCHOOL DISTRICT	0	0	0	2	3	0
BOX ELDER SCHOOL DISTRICT	9	8	10	1	1	0
CACHE SCHOOL DISTRICT	0	0	0	0	0	0
CANYONS SCHOOL DISTRICT	0	0	4	1	4	4
CARBON SCHOOL DISTRICT	8	0	8	1	0	1
DAGGETT SCHOOL DISTRICT	0	0	0	0	0	0
DAVIS SCHOOL DISTRICT	0	0	0	1	0	2
DUCHESNE SCHOOL DISTRICT	0	0	0	1	1	0
EMERY SCHOOL DISTRICT	10	0	0	8	0	1
GARFIELD SCHOOL DISTRICT	0	0	0	5	4	4
GRAND SCHOOL DISTRICT	0	0	0	0	0	0
GRANITE SCHOOL DISTRICT	0	0	30	19	32	34
IRON SCHOOL DISTRICT	0	0	0	0	0	0
JORDAN DISTRICT NUTRITION SERVICES	0	0	0	0	0	0
JUAB SCHOOL DISTRICT	0	0	0	0	0	0
KANE SCHOOL DISTRICT	0	0	0	3	3	0
LOGAN SCHOOL DISTRICT	8	8	8	0	0	0
MILLARD SCHOOL DISTRICT	0	0	0	0	1	0
MORGAN SCHOOL DISTRICT	0	0	0	0	0	0
MURRAY SCHOOL DISTRICT	0	0	0	0	0	0
NEBO SCHOOL DISTRICT	1	1	1	2	0	0
NO SANPETE SCHOOL DIST	0	0	1	7	1	0
NO SUMMIT SCHOOL DISTRICT	0	0	0	0	0	0
OGDEN SCHOOL DISTRICT	8	9	12	6	6	5
PARK CITY SCHOOL DISTRICT	0	1	1	0	0	0
PIUTE SCHOOL DISTRICT	0	0	0	0	0	0
PROVO SCHOOL DISTRICT	0	0	1	2	2	0
RICH SCHOOL DISTRICT	0	0	0	0	0	0
SALT LAKE SCHOOL DISTRICT	2	2	2	0	4	6
SAN JUAN SCHOOL DISTRICT	12	12	12	0	6	0
SEVIER SCHOOL DISTRICT	0	0	0	0	0	0
SO SANPETE SCHOOL DIST	0	0	0	0	0	0
SO SUMMIT SCHOOL DISTRICT	0	0	0	0	0	2
TINTIC SCHOOL DISTRICT	0	0	0	0	0	0
TOOELE SCHOOL DISTRICT	3	3	4	2	2	0
UINTAH SCHOOL DISTRICT	0	0	0	1	1	0
WASATCH SCHOOL DISTRICT	0	0	0	0	0	0
WASHINGTON SCHOOL DIST	0	0	1	1	0	1
WAYNE SCHOOL DISTRICT	0	0	0	0	0	0
WEBER SCHOOL DISTRICT	0	0	0	2	0	2
TOTALS	61	44	95	69	75	64

ALPINE SCHOOL DISTRICT

	SY 2014-15	SY 2015-16	SY 2016-17	SY 2014-15	SY 2015-16	SY 2016-17	SY 2014-15	SY 2015-16	SY 2016-17	SY 2014-15	SY 2015-16	SY 2016-17
SCHOOL	% F/R			% F/R Students Participating in SBP			Offer Breakfast at No Charge			Alternative Service Model		
ALPINE ELEMENTARY	15.23%	13.21%	12.13%	30.60	41.96	38.5						
AMERICAN FORK HIGH	15.71%	19.04%	16.74%	27.28	20.67	22.3						
AMERICAN FORK JR HIGH	22.18%	14.97%	20.34%	20.55	17.96	23.9						
ASPEN ELEMENTARY	36.34%	35.47%	31.67%	39.66	39.17	41.2						
BARRATT ELEMENTARY	15.50%	16.67%	14.18%	26.97	25.83	30.4						
BLACK RIDGE ELEMENTARY	18.50%	17.88%	13.31%	30.99	29.70	28.5						
BONNEVILLE ELEMENTARY	53.47%	54.34%	50.76%	31.23	30.18	28.2						
CANYON VIEW JR HIGH	41.03%	40.52%	41.80%	28.96	24.23	27.0						
CASCADE ELEMENTARY	30.57%	28.91%	23.12%	30.05	30.42	32.4						
CEDAR RIDGE ELEMENTARY	13.92%	13.04%	9.32%	19.23	24.39	21.9						
CEDAR VALLEY ELEMENTARY	42.50%	37.29%	41.74%	51.23	47.90	45.4						
CENTRAL ELEMENTARY	54.27%	43.44%	46.89%	36.67	34.35	35.8						
CHERRY HILL ELEMENTARY	56.65%	53.64%	56.94%	34.42	32.34	34.9						
DAN W PETERSON SCHOOL	30.85%	26.64%	22.83%	NA	NA	NA						
DEERFIELD ELEMENTARY	10.39%	8.51%	5.9%	44.11	36.36	38.4						
DRY CREEK ELEMENTARY	18.50%	12.93%	13.03%	24.96	28.20	29.4						
EAGLE CREST ELEMENTARY	15.50%	11.97%	8.70%	17.57	10.15	13.3						
EAGLE VALLEY ELEMENTARY	41.04%	40.37%	41.32%	37.44	34.40	35.9						
FOOTHILL ELEMENTARY	26.96%	25.12%	27.37%	23.70	21.44	17.5						
FORBES ELEMENTARY	47.74%	44.10%	34.40%	38.59	32.13	32.5						
FOX HOLLOW ELEMENTARY	27.86%	27.12%	22.23%	32.99	30.93	36.1						
FREEDOM ELEMENTARY	8.90%	7.19%	5.9%	11.44	12.17	10.0						
FRONTIER MIDDLE SCHOOL	32.44%	29.34%	29.11%	29.47	24.76	26.6						
GENEVA ELEMENTARY	83.27%	78.26%	79.51%	44.88	41.79	46.1						
GREENWOOD ELEMENTARY	61.07%	55.92%	47.43%	33.88	33.74	33.2						
GROVECREST ELEMENTARY	21.61%	18.60%	19.61%	27.33	31.37	29.8						
HARVEST ELEMENTARY	17.32%	15.83%	14.26%	28.52	29.47	29.1						
HIDDEN HOLLOW ELEMENTARY	30.13%	26.10%	30.42%	31.20	29.42	34.4						
HIGHLAND ELEMENTARY	11.27%	10.02%	5.9%	27.54	24.01	31.5						
HILLCREST ELEMENTARY	54.33%	48.74%	45.22%	34.11	32.90	32.4						
HORIZON ELEMENTARY	26.09%	26.47%	27.45%	NA	8.20	6.3						
LAKERIDGE JR HIGH	45.92%	39.08%	42.49%	25.03	22.59	23.8						
LEGACY ELEMENTARY	14.90%	14.94%	14.38%	29.47	28.53	23.3				"Grab and Go"	"Grab and Go"	"Grab and Go"
LEHI ELEMENTARY	35.15%	31.80%	29.08%	40.50	31.95	35.5						
LEHI HIGH	17.36%	15.51%	16.53%	27.73	26.86	33.0						
LEHI JR HIGH	18.29%	15.43%	20.92%	18.77	20.99	16.1						
LINDON ELEMENTARY	26.14%	23.71%	19.35%	27.94	29.80	27.0						
LONE PEAK HIGH	7.55%	5.54%	<5%	16.90	27.48	32.2						
MANILA ELEMENTARY	12.16%	11.79%	8.51%	27.03	21.31	11.8						
MEADOW ELEMENTARY	20.78%	17.97%	17.55%	24.91	21.72	21.6						
MOUNT MAHOGANY ELEMENTARY	43.93%	43.05%	36.77%	41.16	40.39	44.6						
MOUNTAIN RIDGE JR HIGH	10.94%	8.74%	6.83%	21.62	17.82	15.3						
MOUNTAIN TRAILS ELEMENTARY	38.19%	37.38%	36.25%	29.81	33.09	32.6						
MOUNTAIN VIEW HIGH	39.95%	36.79%	37.01%	30.46	29.21	30.6						
NORTH POINT ELEMENTARY	16.95%	15.17%	15.80%	31.20	23.28	23.9						
NORTHRIDGE ELEMENTARY	25.04%	24.49%	20.98%	31.43	33.90	39.2						
OAK CANYON JR HIGH	20.40%	19.69%	16.84%	16.74	21.71	23.5						

ALPINE SCHOOL DISTRICT, cont.

	SY 2014-15	SY 2015-16	SY 2016-17	SY 2014-15	SY 2015-16	SY 2016-17	SY 2014-15	SY 2015-16	SY 2016-17	SY 2014-15	SY 2015-16	SY 2016-17
SCHOOL	% F/R			% F/R Students Participating in SBP			Offer Breakfast at No Charge			Alternative Service Model		
ORCHARD ELEMENTARY	27.69%	27.87%	27.43%	33.96	35.64	32.1						
OREM ELEMENTARY	40.91%	40.76%	29.04%	48.01	41.19	36.0						
OREM HIGH	29.84%	26.67%	21.90%	21.37	24.49	23.8						
OREM JR HIGH*	59.91%	58.74%	64.70%	32.00	32.12	29.5				"Grab and Go"	"Grab and Go"	"Grab and Go"
PLEASANT GROVE HIGH	19.63%	17.17%	19.50%	28.13	29.23	32.6				"Grab and Go"	"Grab and Go"	
PLEASANT GROVE JR HIGH	29.85%	26.04%	23.93%	26.58	29.65	28.3						
POLARIS HIGH	73.24%	96.88%	≥98%	NA	61.50	59.2						
PONY EXPRESS ELEMENTARY	37.15%	32.69%	28.26%	29.85	36.30	31.9						
RIDGELINE ELEMENTARY	9.78%	6.53%	5-9%	17.58	11.14	23.0						
RIVER ROCK ELEMENTARY	NA	12.84%	7.88%	NA	30.69	29.9						
RIVERVIEW ELEMENTARY	16.37%	14.81%	16.52%	21.27	24.89	20.5						
ROCKY MOUNTAIN ELEMENTARY	17.36%	19.39%	21.53%	29.48	30.96	21.4						
SAGE HILLS ELEMENTARY	19.48%	16.28%	16.44%	35.36	28.57	39.6						
SARATOGA SHORES ELEMENTARY	16.59%	13.72%	10.42%	35.01	26.80	23.5						
SCERA PARK ELEMENTARY	45.23%	46.99%	35.46%	42.30	41.84	45.8						
SEGO LILY ELEMENTARY	18.39%	14.73%	13.58%	26.88	31.77	29.8						
SHARON ELEMENTARY	80.04%	83.89%	91.75%	44.30	41.09	40.4						
SHELLEY ELEMENTARY	18.67%	13.77%	12.22%	14.06	15.13	20.7						
SKYRIDGE HIGH SCHOOL	NA	NA	15.50%	NA	NA	32.5						
SNOW SPRINGS ELEMENTARY	18.19%	18.28%	16.06%	29.67	27.44	24.5						
SPRINGSIDE ELEMENTARY	NA	NA	15.00%	NA	NA	28.4						
SUNCREST ELEMENTARY	74.82%	82.05%	79.90%	32.37	38.58	33.2						
THUNDER RIDGE ELEMENTARY	27.47%	19.09%	16.73%	26.97	23.03	29.0						
TIMBERLINE MIDDLE	8.32%	6.66%	<5%	17.15	17.63	18.7						
TIMPANOGOS HIGH	30.34%	31.96%	29.37%	30.29	29.89	29.9						
TRAVERSE MOUNTAIN ELEMENTARY	12.90%	11.16%	5-9%	33.80	25.95	21.2						
VALLEY VIEW ELEMENTARY	32.26%	23.73%	25.60%	33.85	34.06	41.5						
VINEYARD ELEMENTARY	47.54%	42.40%	43.70%	32.22	30.63	37.4						
VISTA HEIGHTS MIDDLE	20.63%	16.77%	19.55%	24.05	20.21	20.4						
WESTFIELD ELEMENTARY	7.80%	6.41%	<5%	56.39	48.07	24.1				Nudge	Nudge	
WESTLAKE HIGH	23.32%	21.77%	20.91%	32.41	29.17	25.8						
WESTMORE ELEMENTARY	68.70%	72.80%	72.57%	34.37	31.46	29.8						
WILLOWCREEK MIDDLE	23.65%	19.44%	19.10%	22.06	20.62	19.1						
WINDSOR ELEMENTARY	73.13%	76.23%	64.78%	53.09	52.07	55.2						
TOTALS	26.39%	28.88%	22.87%	30.8	29.4	29.6	0	0	0	4	4	2

BEAVER SCHOOL DISTRICT

	SY 2014-15	SY 2015-16	SY 2016-17	SY 2014-15	SY 2015-16	SY 2016-17	SY 2014-15	SY 2015-16	SY 2016-17	SY 2014-15	SY 2015-16	SY 2016-17
SCHOOL	% F/R			% F/R Students Participating in SBP			Offer Breakfast at No Charge			Alternative Service Model		
BEAVER HIGH*	38.36%	36.30%	35.62%	41.71	42.60	36.5				"Grab and Go"	"Grab and Go"	
BELKNAP ELEMENTARY*	47.84%	51.57%	48.82%	44.22	47.10	41.8				"Grab and Go"	"Grab and Go"	
MILFORD ELEMENTARY	41.81%	58.41%	50.44%	48.42	52.00	57.5						
MILFORD HIGH	33.50%	35.98%	42.18%	NA	100.00	127.1					"Grab and Go"	
MINERSVILLE	46.41%	45.99%	41.73%	47.72	48.60	47.8						
TOTALS	40-45%	40-45%	40-45%	45.5	59.1	62.1	0	0	0	2	3	0

BOX ELDER SCHOOL DISTRICT

	SY 2014-15	SY 2015-16	SY 2016-17	SY 2014-15	SY 2015-16	SY 2016-17	SY 2014-15	SY 2015-16	SY 2016-17	SY 2014-15	SY 2015-16	SY 2016-17
SCHOOL	% F/R			% F/R Students Participating in SBP			Offer Breakfast at No Charge			Alternative Service Model		
ADELE C YOUNG INTERMEDIATE	36.08%	36.50%	36.14%	17.49	21.30	22.6						
ALICE C HARRIS INTERMEDIATE	46.32%	42.74%	41.95%	18.17	20.90	18.4						
BEAR RIVER HIGH	28.68%	26.73%	28.90%	26.05	34.50	41.3						
BEAR RIVER MIDDLE	39.17%	38.29%	39.38%	12.64	19.20	15.1						
BOX ELDER HIGH	25.00%	24.72%	26.77%	45.87	42.80	38.9						
BOX ELDER MIDDLE	32.73%	32.58%	32.08%	16.14	17.10	18.7						
CENTURY ELEMENTARY	35.31%	35.97%	30.25%	38.25	37.20	38.8						
COMMUNITY HIGH	NA	NA	53.28%	92.70	92.70	75.7						
DISCOVERY ELEMENTARY	40.22%	37.55%	44.12%	49.12	50.40	52.2	Universal Free	Universal Free	Universal Free			
FIELDING ELEMENTARY	43.21%	40.95%	40.53%	59.88	66.70	70.4	Universal Free	Universal Free	Universal Free			
FOOTHILL ELEMENTARY	37.02%	33.13%	37.00%	57.07	52.90	50.4	Universal Free	Universal Free	Universal Free			
GARLAND ELEMENTARY	43.69%	40.65%	42.48%	46.20	51.60	47.5	Universal Free	Universal Free	Universal Free			
GROUSE CREEK	>20%	50-59%	N≤10	90.65	100.00	96.7	Universal Free			Breakfast After the Bell	Breakfast After the Bell	
LAKE VIEW ELEMENTARY	49.47%	47.60%	47.49%	46.42	45.50	44.8	Universal Free	Universal Free	Universal Free			
MCKINLEY ELEMENTARY	53.52%	52.69%	52.31%	51.04	48.50	48.2	Universal Free	Universal Free	Universal Free			
MOUNTAIN VIEW ELEMENTARY	57.14%	54.90%	64.97%	60.16	65.30	65.9	Universal Free	Universal Free	Universal Free			
NORTH PARK ELEMENTARY	44.30%	43.92%	40.85%	43.31	47.40	48.1	Universal Free	Universal Free	Universal Free			
PARK VALLEY ELEMENTARY	20-29%	20-29%	20-29%	44.63	31.10	60.4			Universal Free			
SNOWVILLE ELEMENTARY	60-69%	60-69%	60-69%	102.94	116.80	119.1			Universal Free			
THREE MILE CREEK	20.07%	18.71%	15.88%	19.94	22.00	16.2						
WILLARD ELEMENTARY	17.54%	15.83%	18.28%	24.85	36.80	56.4						
TOTALS	37.27%	36.67%	36.74%	45.9	48.7	49.8	9	8	10	1	1	0

CACHE SCHOOL DISTRICT

	SY 2014-15	SY 2015-16	SY 2016-17	SY 2014-15	SY 2015-16	SY 2016-17	SY 2014-15	SY 2015-16	SY 2016-17	SY 2014-15	SY 2015-16	SY 2016-17
SCHOOL	% F/R			% F/R Students Participating in SBP			Offer Breakfast at No Charge			Alternative Service Model		
BIRCH CREEK ELEMENTARY	38.99%	41.42%	43.56%	31.23	30.80	29.2						
CANYON ELEMENTARY	39.31%	42.23%	42.23%	28.07	29.90	26.8						
CEDAR RIDGE MIDDLE	28.84%	27.23%	24.04%	14.37	16.50	15.2						
GREENVILLE ELEMENTARY	29.87%	29.72%	27.10%	34.14	33.90	38.0						
HERITAGE ELEMENTARY	26.44%	30.49%	26.17%	16.99	18.80	14.8						
LEWISTON ELEMENTARY	43.02%	43.61%	39.44%	15.35	16.50	13.5						
LINCOLN ELEMENTARY	54.72%	51.72%	48.76%	29.90	30.60	28.1						
MILLVILLE ELEMENTARY	40.10%	40.85%	34.86%	30.79	30.40	34.6						
MOUNTAIN CREST HIGH	22.44%	22.50%	21.90%	8.64	9.90	14.5						
MOUNTAINSIDE ELEMENTARY	27.53%	27.43%	25.34%	20.92	23.60	21.8						
NIBLEY ELEMENTARY	42.78%	46.01%	45.17%	31.45	30.20	29.5						
NORTH PARK ELEMENTARY	24.47%	23.13%	20.50%	28.60	28.90	26.1						
NORTH CACHE 8/9 CENTER	29.96%	30.81%	28.14%	13.04	16.10	13.2						
PARK ELEMENTARY	39.03%	37.99%	37.43%	27.98	35.40	22.9						

CACHE SCHOOL DISTRICT, cont.

	SY 2014-15	SY 2015-16	SY 2016-17	SY 2014-15	SY 2015-16	SY 2016-17	SY 2014-15	SY 2015-16	SY 2016-17	SY 2014-15	SY 2015-16	SY 2016-17
SCHOOL	% F/R			% F/R Students Participating in SBP			Offer Breakfast at No Charge			Alternative Service Model		
PROVIDENCE ELEMENTARY	21.31%	22.28%	20.80%	15.25	20.30	5.7						
RIDGELINE HIGH	NA	NA	19.85%	NA	NA	NA						
RIVER HEIGHTS ELEMENTARY	24.26%	21.56%	21.28%	17.21	18.80	15.1						
SKY VIEW HIGH	21.90%	20.80%	20.33%	24.94	18.50	18.2						
SOUTH CACHE 8/9 CENTER	25.95%	26.58%	30.14%	13.00	12.40	11.9						
SPRING CREEK MIDDLE	25.20%	26.08%	19.57%	14.28	12.20	17.9						
SUMMIT ELEMENTARY	41.79%	42.32%	40.75%	26.41	31.80	32.5						
SUNRISE ELEMENTARY	21.28%	24.01%	23.06%	15.77	17.20	14.3						
WELLSVILLE ELEMENTARY	27.15%	24.52%	20.94%	15.61	21.90	10.8						
WHITE PINE MIDDLE	40.21%	41.54%	36.63%	13.89	10.30	8.9						
WILLOW VALLEY MIDDLE	37.92%	38.15%	NA	16.16	20.60	NA						
TOTALS	29.94%	32.62%	27.84%	21.0	22.3	20.6	0	0	0	0	0	0

CANYONS SCHOOL DISTRICT

	SY 2014-15	SY 2015-16	SY 2016-17	SY 2014-15	SY 2015-16	SY 2016-17	SY 2014-15	SY 2015-16	SY 2016-17	SY 2014-15	SY 2015-16	SY 2016-17
SCHOOL	% F/R			% F/R Students Participating in SBP			Offer Breakfast at No Charge			Alternative Service Model		
ALBION MIDDLE	13.19%	13.98%	13.40%	20.7	16.4	16.9						
ALTA HIGH	16.77%	14.73%	14.67%	22.8	25.5	30.1						
ALTA VIEW ELEMENTARY	29.56%	26.87%	26.29%	30.9	19.9	18.2						
ALTARA ELEMENTARY	24.19%	23.12%	24.10%	28.2	22.6	23.1						
BELL VIEW ELEMENTARY	64.35%	47.37%	36.94%	32.1	36.9	32.9						
BELLA VISTA ELEMENTARY	35.67%	34.28%	31.10%	41.9	45.0	42.8						
BRIGHTON HIGH	14.57%	12.74%	12.66%	25.1	24.6	23.4						
BROOKWOOD ELEMENTARY	10.04%	11.43%	5-10%	13.2	10.2	20.4						
BUTLER ELEMENTARY	14.51%	13.90%	14.45%	NA	NA	NA						
BUTLER MIDDLE	24.08%	23.84%	22.12%	20.2	24.9	22.4						
CANYON VIEW ELEMENTARY	21.14%	21.84%	16.99%	NA	NA	NA						
COPPERVIEW ELEMENTARY*	77.66%	83.44%	78.85%	98.9	88.4	86.3		Universal Free		Breakfast in the Classroom	Breakfast in the Classroom	Breakfast in the Classroom
CORNER CANYONS HIGH	9.86%	7.47%	6.88%	23.1	15.7	16.2						
CRESCENT ELEMENTARY	27.96%	25.47%	26.64%	NA	25.2	24.8						
CRESCENT VIEW MIDDLE (DRAPER PARK MIDDLE)	12.38%	7.54%	9.38%	15.0	24.7	22.7						
DRAPER ELEMENTARY	14.56%	11.80%	11.23%	13.3	19.0	13.3						
EAST MIDVALE ELEMENTARY	71.40%	75.49%	70.40%	49.1	104.7	103.1		Universal Free		Breakfast in the Classroom	Breakfast in the Classroom	
EAST SANDY ELEMENTARY	28.08%	24.26%	21.45%	31.3	29.6	26.8						
EASTMONT MIDDLE	29.63%	26.31%	24.79%	15.0	14.8	13.2						
EDGEMONT ELEMENTARY	41.04%	40.19%	43.20%	36.2	38.8	36.5						
GRANITE ELEMENTARY	14.43%	10.63%	10-15%	NA	NA	NA						
HILLCREST HIGH	36.31%	34.84%	36.13%	18.5	23.6	27.5						
INDIAN HILLS MIDDLE	18.70%	16.84%	15.45%	17.8	14.5	17.8						
JORDAN HIGH	33.10%	30.38%	31.23%	27.1	25.8	30.7						
JORDAN VALLEY	39.80%	30-39%	30-39%	NA	NA	NA						
LONE PEAK ELEMENTARY	8.39%	8.72%	5-10%	NA	NA	NA						
MIDVALE ELEMENTARY	82.55%	79.37%	73.53%	30.7	92.8	91.7		Universal Free		Breakfast in the Classroom	Breakfast in the Classroom	

CANYONS SCHOOL DISTRICT, cont.

	SY 2014-15	SY 2015-16	SY 2016-17	SY 2014-15	SY 2015-16	SY 2016-17	SY 2014-15	SY 2015-16	SY 2016-17	SY 2014-15	SY 2015-16	SY 2016-17
SCHOOL	% F/R			% F/R Students Participating in SBP			Offer Breakfast at No Charge			Alternative Service Model		
MIDVALE MIDDLE	64.14%	66.31%	66.49%	15.3	40.8	36.2						
MIDVALLEY ELEMENTARY	56.17%	63.73%	53.64%	32.8	24.7	23.9						
MOUNT JORDAN	47.74%	46.39%	43.73%	28.7	22.1	19.9						
OAK HOLLOW ELEMENTARY	9.74%	9.25%	12.01%	NA	NA	NA						
OAKDALE ELEMENTARY	24.17%	26.62%	25.53%	28.1	24.2	28.5						
PARK LANE ELEMENTARY	19.32%	15.50%	17.48%	NA	37.7	31.9						
PERUVIAN PARK ELEMENTARY	27.34%	27.29%	25.50%	27.2	27.1	36.7						
QUAIL HOLLOW ELEMENTARY	16.73%	13.98%	13.36%	19.3	21.4	17.7						
RIDGECREST ELEMENTARY	28.69%	30.73%	29.49%	NA	38.7	33.9						
SANDY ELEMENTARY	59.18%	60.57%	54.59%	34.6	89.7	86.0			Universal Free		Breakfast in the Classroom	Breakfast in the Classroom
SILVER MESA ELEMENTARY	24.92%	19.90%	18.50%	37.1	34.6	30.8						
SPRUCEWOOD ELEMENTARY	26.68%	25.27%	25.66%	34.4	25.5	27.9						
SUNRISE ELEMENTARY	16.42%	10-19%	10-15%	15.3	18.0	27.1						
UNION MIDDLE	44.35%	37.06%	37.15%	27.3	22.8	22.7						
WILLOW CANYON ELEMENTARY	21.48%	21.35%	20.10%	35.7	29.8	37.3						
WILLOW SPRINGS ELEMENTARY	15.49%	11.59%	14.97%	NA	NA	NA						
TOTALS	30.62%	26.56%	25.77%	28.7	33.4	33.4	0	0	4	1	4	4

CARBON SCHOOL DISTRICT

	SY 2014-15	SY 2015-16	SY 2016-17	SY 2014-15	SY 2015-16	SY 2016-17	SY 2014-15	SY 2015-16	SY 2016-17	SY 2014-15	SY 2015-16	SY 2016-17
SCHOOL	% F/R			% F/R Students Participating in SBP			Offer Breakfast at No Charge			Alternative Service Model		
BRUIN POINT ELEMENTARY	67.36%	73.53%	68.49%	100.0	100.0	107.8	Universal Free		Universal Free	Breakfast After the Bell		Second Chance Breakfast/ Breakfast After the Bell
CARBON HIGH	31.73%	34.79%	30.55%	36.1	39.8	39.7	Universal Free		Universal Free			
CASTLE HEIGHTS ELEMENTARY*	41.87%	44.49%	40.84%	43.5	46.0	58.7	Universal Free		Universal Free			
CREEKVIEW ELEMENTARY*	39.96%	40.79%	36.17%	55.1	55.9	55.2	Universal Free		Universal Free			
HELPER JR HIGH*	44.28%	44.12%	43.88%	48.9	50.5	54.7	Universal Free		Universal Free			
MOUNT HARMON JR HIGH*	41.45%	46.25%	40.70%	45.6	37.1	36.7	Universal Free		Universal Free			
SALLY MAURO ELEMENTARY*	50.29%	50.55%	49.59%	65.6	80.5	72.2	Universal Free		Universal Free			
WELLINGTON ELEMENTARY*	49.04%	57.10%	51.63%	68.8	72.4	71.8	Universal Free		Universal Free			
TOTALS	42.61%	40-45%	40-45%	58.0	60.7	62.1	8	0	8	1	0	1

DAGGETT SCHOOL DISTRICT

	SY 2014-15	SY 2015-16	SY 2016-17	SY 2014-15	SY 2015-16	SY 2016-17	SY 2014-15	SY 2015-16	SY 2016-17	SY 2014-15	SY 2015-16	SY 2016-17
SCHOOL	% F/R			% F/R Students Participating in SBP			Offer Breakfast at No Charge			Alternative Service Model		
MANILA ELEMENTARY	30.77%	29.17%	28.57%	27.2	30.3	34.6						
MANILA HIGH	23.60%	18.89%	10-19%	45.7	43.3	42.1						
TOTALS	27.46%	24.03%	20-25%	36.5	36.8	38.3	0	0	0	0	0	0

DAVIS SCHOOL DISTRICT

	SY 2014-15	SY 2015-16	SY 2016-17	SY 2014-15	SY 2015-16	SY 2016-17	SY 2014-15	SY 2015-16	SY 2016-17	SY 2014-15	SY 2015-16	SY 2016-17
SCHOOL	% F/R			% F/R Students Participating in SBP			Offer Breakfast at No Charge			Alternative Service Model		
ADAMS ELEMENTARY	30.64%	26.63%	27.22%	31.2	31.8	25.3						
ADELAIDE ELEMENTARY	44.65%	47.18%	47.99%	24.6	29.9	31.7						
ANTELOPE ELEMENTARY	53.08%	47.85%	46.30%	51.1	46.8	44.4						
BLUFF RIDGE ELEMENTARY	15.38%	10.58%	11.75%	15.0	14.1	18.0						
BOULTON ELEMENTARY	25.33%	19.50%	21.23%	33.4	35.0	26.3						
BOUNTIFUL ELEMENTARY	31.21%	24.90%	24.05%	21.5	24.7	17.1						
BOUNTIFUL HIGH	14.30%	14.29%	13.67%	36.5	35.9	28.7						
BOUNTIFUL JR HIGH	29.17%	25.47%	26.14%	24.8	18.6	24.7						
BUFFALO POINT	22.70%	18.39%	18.59%	17.7	12.8	13.9						
CANYON CREEK ELEMENTARY	NA	NA	4.69%	NA	NA	4.1						
CENTENNIAL JR HIGH	8.67%	6.70%	4.76%	20.2	13.9	13.3						
CENTERVILLE ELEMENTARY	23.00%	23.50%	20.58%	33.3	25.6	29.1						
CENTERVILLE JR HIGH	17.15%	15.41%	14.43%	20.5	19.9	20.6						
CENTRAL DAVIS JR. HIGH	37.92%	36.62%	37.50%	26.3	24.0	26.7						
CLEARFIELD HIGH	35.88%	30.61%	24.84%	44.7	45.7	52.6						
CLINTON ELEMENTARY	35.59%	32.48%	31.68%	26.9	29.7	28.1						
COLUMBIA ELEMENTARY	19.42%	21.67%	16.67%	21.7	28.1	25.7						
COOK ELEMENTARY	29.76%	29.04%	23.73%	28.4	27.9	22.3						
CREEKSIDE ELEMENTARY	29.96%	28.40%	24.76%	36.7	34.9	33.1						
CRESTVIEW ELEMENTARY	61.73%	60.42%	54.74%	44.8	48.6	51.3						
DAVIS HIGH	10.10%	9.00%	8.86%	45.1	35.6	27.8						
DOXEY ELEMENTARY	64.27%	67.73%	68.89%	36.4	37.0	46.6						
EAGLE BAY ELEMENTARY	6.49%	5.06%	6.34%	9.4	9.1	4.0						
EAST LAYTON ELEMENTARY	20.65%	16.27%	17.30%	10.4	10.4	13.8						
ELLISON PARK ELEMENTARY	27.43%	23.14%	21.33%	30.1	27.5	24.7						
ENDEAVOUR ELEMENTARY	4.07%	3.05%	3.15%	0.0	2.3	18.8						
FAIRFIELD JR HIGH	27.15%	23.93%	24.09%	20.0	22.2	24.7						
FARMINGTON ELEMENTARY	19.74%	14.25%	15.37%	25.4	29.9	27.3						
FARMINGTON JR HIGH	12.30%	9.43%	10.41%	23.0	18.8	23.3						
FOXBORO ELEMENTARY	27.17%	27.18%	32.51%	21.3	19.9	20.8						
FREMONT ELEMENTARY	55.45%	54.61%	56.03%	43.2	40.4	38.8						
H C BURTON ELEMENTARY	14.56%	14.61%	14.74%	28.5	33.3	39.6						
HERITAGE ELEMENTARY	8.58%	7.94%	6.49%	5.6	3.8	11.4						
HILL FIELD ELEMENTARY	36.47%	34.33%	35.96%	21.4	25.4	29.6						
HOLBROOK ELEMENTARY	23.27%	20.46%	16.60%	24.9	30.6	23.6						
HOLT ELEMENTARY	58.47%	57.51%	60.23%	45.1	37.7	38.5						
J. A. TAYLOR ELEMENTARY	24.57%	19.42%	18.16%	35.8	34.7	29.7						
KAY'S CREEK ELEMENTARY	NA	NA	<5%	NA	NA	14.6						
KAYSVILLE ELEMENTARY	17.05%	14.57%	14.53%	29.7	29.2	36.4						
KAYSVILLE JR HIGH	16.83%	15.05%	15.35%	28.4	24.4	20.8						
KING ELEMENTARY	44.95%	44.57%	40.75%	42.4	38.5	40.5						
KNOWLTON ELEMENTARY	11.88%	12.15%	9.83%	30.0	21.9	23.4				"Grab and Go"		"Grab and Go"
LAKESIDE ELEMENTARY	26.17%	25.47%	25.14%	19.5	15.1	15.8						
LAYTON ELEMENTARY	46.85%	43.39%	42.06%	36.9	42.6	42.4						
LAYTON HIGH	23.16%	19.72%	19.36%	42.3	35.9	34.0						
LEGACY JR HIGH	17.46%	16.35%	13.32%	24.0	22.8	20.8						
LINCOLN ELEMENTARY	57.46%	54.39%	54.17%	31.1	30.8	29.0						

DAVIS SCHOOL DISTRICT, cont.

	SY 2014-15	SY 2015-16	SY 2016-17	SY 2014-15	SY 2015-16	SY 2016-17	SY 2014-15	SY 2015-16	SY 2016-17	SY 2014-15	SY 2015-16	SY 2016-17
SCHOOL	% F/R			% F/R Students Participating in SBP			Offer Breakfast at No Charge			Alternative Service Model		
MEADOWBROOK ELEMENTARY	46.94%	45.93%	40.76%	37.7	37.2	32.1						
MILLCREEK JR HIGH	22.84%	19.43%	20.53%	27.7	23.0	16.2						
MORGAN ELEMENTARY	11.73%	10.31%	9.10%	22.9	22.6	20.4						
MOUNTAIN HIGH	46.70%	41.18%	38.33%	54.6	57.1	47.3						
MOUNTAIN VIEW ELEMENTARY	25.09%	24.06%	22.29%	47.8	42.6	30.7						
MUELLER PARK JR HIGH	18.17%	16.61%	20.78%	15.7	22.8	18.7						
MUIR ELEMENTARY	11.08%	10.48%	9.51%	22.3	19.3	19.7						
NORTH DAVIS JR.	57.69%	54.61%	57.33%	42.0	35.2	36.3						
NORTH LAYTON JR HIGH	35.88%	34.16%	38.95%	20.2	22.0	19.7						
NORTHRIDGE HIGH	23.86%	26.98%	25.73%	32.7	34.4	32.6						
OAK HILLS ELEMENTARY	10.77%	12.80%	10.12%	24.3	22.8	24.9						
ODYSSEY ELEMENTARY	13.49%	14.91%	14.75%	9.1	13.4	13.3						
ORCHARD ELEMENTARY	21.70%	17.81%	17.50%	44.9	40.5	38.4						
PARKSIDE ELEMENTARY	35.52%	31.53%	34.27%	35.3	30.5	36.1						
READING ELEMENTARY	13.61%	11.87%	13.14%	29.4	35.8	32.6						
SAND SPRINGS ELEMENTARY	14.63%	13.45%	11.98%	23.8	22.8	27.8						
SNOW HORSE ELEMENTARY	6.99%	6.02%	6.06%	14.9	11.9	23.3						
SOUTH CLEARFILED ELEMENTARY	62.15%	60.28%	59.82%	39.6	39.7	43.5						
SOUTH DAVIS JR HIGH	28.16%	25.68%	26.32%	35.8	30.6	24.6						
SOUTH WEBER ELEMENTARY	17.17%	14.34%	14.78%	11.0	8.8	8.0						
STEWART ELEMENTARY	16.31%	17.11%	16.87%	21.9	25.5	31.0						
SUNSET ELEMENTARY	62.22%	60.91%	56.77%	44.3	43.3	49.3						
SUNSET JUNIOR HIGH	34.08%	31.97%	31.93%	32.3	28.8	23.1						
SYRACUSE ELEMENTARY	20.53%	17.94%	19.78%	20.4	18.7	15.7						
SYRACUSE HIGH	24.01%	21.91%	19.80%	45.6	39.2	37.8						
SYRACUSE JR HIGH	24.59%	22.71%	21.77%	18.3	16.0	12.4						
TOLMAN ELEMENTARY	26.44%	23.50%	22.36%	29.0	44.7	50.5						
VAE VIEW ELEMENTARY	72.34%	67.42%	64.61%	33.4	33.9	44.6						
VALLEY VIEW ELEMENTARY	15.61%	18.58%	16.67%	13.7	26.8	29.0						
VIEWMONT HIGH	14.57%	13.60%	12.25%	25.4	23.7	28.3						Second Chance Breakfast/ Breakfast After the Bell
WASATCH ELEMENTARY	60.04%	61.08%	60.55%	37.2	38.6	43.8						
WASHINGTON ELEMENTARY	57.47%	53.99%	52.04%	46.4	49.4	45.0						
WEST BOUNTIFUL ELEMENTARY	19.77%	20.50%	19.49%	19.3	21.4	21.6						
WEST CLINTON ELEMENTARY	29.42%	27.03%	26.49%	33.3	30.4	35.7						
WEST POINT ELEMENTARY	25.22%	22.30%	21.55%	25.6	19.8	16.3						
WEST POINT JR HIGH	25.96%	24.62%	23.58%	24.7	23.0	21.3						
WHITESIDES ELEMENTARY	51.57%	57.05%	51.75%	35.4	38.4	39.5						
WINDRIDGE ELEMENTARY	11.06%	11.21%	10.84%	19.5	24.1	18.7						
WOODS CROSS ELEMENTARY	36.47%	31.24%	34.43%	29.4	27.4	27.1						
WOODS CROSS HIGH	18.73%	17.78%	19.44%	27.8	32.0	30.2						
TOTALS	25.61%	26.92%	22.89%	28.8	28.3	27.9	0	0	0	1	0	2

DUCHESNE SCHOOL DISTRICT

	SY 2014-15	SY 2015-16	SY 2016-17	SY 2014-15	SY 2015-16	SY 2016-17	SY 2014-15	SY 2015-16	SY 2016-17	SY 2014-15	SY 2015-16	SY 2016-17
SCHOOL	% F/R			% F/R Students Participating in SBP			Offer Breakfast at No Charge			Alternative Service Model		
ALTAMONT ELEMENTARY	20.76%	31.40%	30.27%	41.1	36.0	45.4						
ALTAMONT HIGH	25.00%	25.00%	25.57%	48.7	44.6	37.7						
CENTENNIAL ELEMENTARY	NA	53.75%	54.58%	NA	40.2	57.5						
DUCHESNE ELEMENTARY	32.39%	37.80%	46.34%	53.0	45.0	47.4						
DUCHESNE HIGH	34.41%	34.41%	38.57%	40.7	29.5	35.6						
EAST ELEMENTARY	34.88%	54.07%	51.49%	44.7	31.2	35.5						
KINGS PEAK ELEMENTARY	33.75%	19.43%	23.80%	35.0	54.8	36.9						
MYTON ELEMENTARY	45.24%	52.74%	60.43%	65.0	68.3	54.9				Nudge	Nudge	
NEOLA ELEMENTARY	40.84%	47.12%	43.09%	52.7	49.2	55.5						
ROOSEVELT JR HIGH	31.39%	37.86%	42.62%	29.8	28.9	30.9						
TABIONA ELEMENTARY	31.58%	31.58%	32.88%	29.5	48.2	49.7						
TABIONA HIGH	22.09%	28.40%	29.63%	66.8	75.3	79.1						
UNION HIGH	25.80%	27.75%	30.88%	43.7	39.7	43.0						
TOTALS	31.38%	37.02%	39.17%	45.9	45.5	46.9	0	0	0	1	1	0

EMERY SCHOOL DISTRICT

	SY 2014-15	SY 2015-16	SY 2016-17	SY 2014-15	SY 2015-16	SY 2016-17	SY 2014-15	SY 2015-16	SY 2016-17	SY 2014-15	SY 2015-16	SY 2016-17
SCHOOL	% F/R			% F/R Students Participating in SBP			Offer Breakfast at No Charge			Alternative Service Model		
BOOK CLIFF ELEMENTARY*	67.23%	75.00%	67.89%	54.6	47.8	31.9	Universal Free			Breakfast in the Classroom		
CANYON VIEW JR HIGH*	44.12%	42.04%	42.20%	52.1	35.4	35.9	Universal Free			Breakfast in the Classroom		
CASTLE DALE ELEMENTARY*	37.84%	35.68%	36.95%	69.8	58.9	48.8	Universal Free			Breakfast in the Classroom		
CLEVELAND ELEMENTARY	28.29%	28.93%	37.84%	63.7	56.5	68.0	Universal Free					
COTTONWOOD ELEMENTARY*	45.00%	45.60%	50.55%	71.0	66.8	52.9	Universal Free			Breakfast in the Classroom		
EMERY HIGH	30.95%	36.08%	36.54%	77.9	87.0	64.4	Universal Free					
FERRON ELEMENTARY*	51.94%	54.78%	46.52%	63.0	53.6	44.7	Universal Free			Breakfast in the Classroom		
GREEN RIVER HIGH*	52.48%	59.05%	65.96%	86.7	48.2	28.3	Universal Free			Breakfast in the Classroom		"Grab and Go"
HUNTINGTON ELEMENTARY*	39.84%	41.46%	39.61%	71.9	70.1	67.6	Universal Free			Breakfast in the Classroom		
SAN RAFAEL JR HIGH*	47.55%	44.36%	47.06%	72.0	54.0	51.8	Universal Free			Breakfast in the Classroom		
TOTALS	42.00%	46.30%	43.86%	68.3	57.8	49.4	10	0	0	8	0	1

GARFIELD SCHOOL DISTRICT

	SY 2014-15	SY 2015-16	SY 2016-17	SY 2014-15	SY 2015-16	SY 2016-17	SY 2014-15	SY 2015-16	SY 2016-17	SY 2014-15	SY 2015-16	SY 2016-17
SCHOOL	% F/R			% F/R Students Participating in SBP			Offer Breakfast at No Charge			Alternative Service Model		
ANTIMONY ELEMENTARY	50-59%	50-59%	30-39%	59.8	39.9	43.0						
BOULDER ELEMENTARY	N<10	N<10	NA	24.0	NA	NA						
BRYCE VALLEY ELEMENTARY	40.53%	58.52%	49.20%	56.5	47.7	46.1						

GARFIELD SCHOOL DISTRICT, cont.

	SY 2014-15	SY 2015-16	SY 2016-17	SY 2014-15	SY 2015-16	SY 2016-17	SY 2014-15	SY 2015-16	SY 2016-17	SY 2014-15	SY 2015-16	SY 2016-17
SCHOOL	% F/R			% F/R Students Participating in SBP			Offer Breakfast at No Charge			Alternative Service Model		
BRYCE VALLEY HIGH	31.75%	52.71%	45.19%	43.8	31.8	36.1				"Grab and Go"		
ESCALANTE ELEMENTARY	34.21%	59.34%	42.73%	37.9	23.6	23.7				"Grab and Go"	"Grab and Go"	"Grab and Go"
ESCALANTE HIGH	30.77%	35.94%	38.27%	37.8	14.3	15.4				"Grab and Go"	"Grab and Go"	"Grab and Go"
PANGUITCH ELEMENTARY	37.23%	43.86%	39.93%	15.9	13.5	20.4						
PANGUITCH HIGH	25.50%	37.42%	32.48%	8.2	7.3	16.0				"Grab and Go"	"Grab and Go"	"Grab and Go"
PANGUITCH MIDDLE	45.33%	44.78%	41.10%	22.4	11.1	30.4				"Grab and Go"	"Grab and Go"	"Grab and Go"
TOTALS	35.64%	43%	40-45%	34.0	23.7	28.9	0	0	0	5	4	4

GRAND SCHOOL DISTRICT

	SY 2014-15	SY 2015-16	SY 2016-17	SY 2014-15	SY 2015-16	SY 2016-17	SY 2014-15	SY 2015-16	SY 2016-17	SY 2014-15	SY 2015-16	SY 2016-17
SCHOOL	% F/R			% F/R Students Participating in SBP			Offer Breakfast at No Charge			Alternative Service Model		
GRAND COUNTY HIGH	38.82%	39.42%	39.46%	56.4	58.8	70.6						
GRAND COUNTY MIDDLE	48.06%	46.89%	50.38%	18.7	19.3	16.1						
HELEN M KNIGHT	52.37%	54.45%	54.57%	33.2	35.9	33.0						
TOTALS	47.52%	46.92%	49.15%	36.1	38.0	39.9	0	0	0	0	0	0

GRANITE SCHOOL DISTRICT

	SY 2014-15	SY 2015-16	SY 2016-17	SY 2014-15	SY 2015-16	SY 2016-17	SY 2014-15	SY 2015-16	SY 2016-17	SY 2014-15	SY 2015-16	SY 2016-17
SCHOOL	% F/R			% F/R Students Participating in SBP			Offer Breakfast at No Charge			Alternative Service Model		
ACADEMY PARK ELEMENTARY	69.46%	68.07%	64.01%	39.5	87.9	87.2			Universal Free	Breakfast in the Classroom	Breakfast in the Classroom	Breakfast in the Classroom
ARCADIA ELEMENTARY	50.60%	48.34%	47.94%	43.5	39.4	40.9						
ARMSTRONG ACADEMY	33.52%	33.14%	30.25%	36.8	30.4	32.6						
BEEHIVE ELEMENTARY	61.13%	56.16%	53.26%	32.6	33.6	34.1						
BENNION ELEMENTARY	40.13%	36.81%	35.12%	35.8	36.4	36.9						
BENNION JR HIGH	39.43%	38.81%	35.02%	25.5	23.6	22.5						
BONNEVILLE JR HIGH	34.69%	33.17%	32.20%	NA	NA	NA						
BROCKBANK JR HIGH	53.24%	51.40%	51.40%	30.9	30.4	NA						
CALVIN SMITH ELEMENTARY	34.57%	31.29%	29.22%	27.3	30.6	30.5						
CARL SANDBURG ELEMENTARY	62.35%	60.31%	59.59%	44.0	49.0	45.2						
CHURCHILL JR HIGH	10.28%	12.22%	9.59%	29.5	12.4	28.9						
COPPER HILLS ELEMENTARY	56.22%	58.47%	56.59%	42.2	90.1	99.6			Universal Free		Breakfast in the Classroom	Breakfast in the Classroom
COTTONWOOD ELEMENTARY	5.75%	8.06%	5.9%	NA	NA	NA						
COTTONWOOD HIGH	39.46%	36.81%	38.83%	42.4	40.4	39.8						
CRESTVIEW ELEMENTARY	21.20%	20.42%	16.12%	39.8	36.5	34.4						
CYPRUS HIGH	41.70%	41.55%	42.68%	25.3	23.0	29.1						
DAVID GOURLEY ELEMENTARY	85.58%	78.10%	70.06%	69.5	92.4	95.6			Universal Free	Breakfast in the Classroom	Breakfast in the Classroom	Breakfast in the Classroom
DIAMOND RIDGE ELEMENTARY	35.31%	34.65%	32.48%	32.1	33.1	26.4						
DOUGLAS T ORCHARD ELEMENTARY	61.83%	59.63%	54.91%	47.4	94.5	93.9			Universal Free	Breakfast in the Classroom	Breakfast in the Classroom	Breakfast in the Classroom
EAST HOLLYWOOD HIGH	43.41%	48.97%	43.77%	81.7	88.5	94.1				"Grab and Go"	"Grab and Go"	"Grab and Go"

GRANITE SCHOOL DISTRICT, cont.

	SY 2014-15	SY 2015-16	SY 2016-17	SY 2014-15	SY 2015-16	SY 2016-17	SY 2014-15	SY 2015-16	SY 2016-17	SY 2014-15	SY 2015-16	SY 2016-17
SCHOOL	% F/R			% F/R Students Participating in SBP			Offer Breakfast at No Charge			Alternative Service Model		
EASTWOOD ELEMENTARY	13.02%	12.47%	11.74%	NA	NA	NA						
EISENHOWER JR HIGH	57.26%	54.89%	55.19%	29.1	27.8	26.5						
ELIZABETH ACADEMY	4.09%	4.52%	<5%	NA	NA	NA						
ELK RUN ELEMENTARY	53.52%	52.59%	49.48%	31.1	102.2	103.9		Universal Free	Breakfast in the Classroom	Breakfast in the Classroom	Breakfast in the Classroom	
ESPERANZA ELEMENTARY	70.07%	72.29%	72.59%	29.5	81.4	99.2				Breakfast in the Classroom	Breakfast in the Classroom	
EVERGREEN JR HIGH	37.73%	38.65%	36.33%	NA	NA	NA						
FOX HILLS ELEMENTARY	50.72%	49.82%	52.50%	30.7	29.3	28.7						
GEARLD WRIGHT ELEMENTARY	48.82%	42.53%	38.08%	23.6	23.4	21.2						
GRANGER ELEMENTARY	79.14%	63.25%	68.15%	45.5	96.0	97.2		Universal Free	Breakfast in the Classroom	Breakfast in the Classroom	Breakfast in the Classroom	
GRANGER HIGH	62.62%	58.77%	57.57%	23.7	24.4	24.9						
GRANITE CONNECTION HIGH	50.67%	58.39%	44.44%	53.7	45.8	52.2						
GRANITE PARK JUNIOR HIGH	86.67%	83.54%	82.96%	31.2	32.4	117.5						
HARRY S TRUMAN ELEMENTARY	58.75%	56.35%	48.51%	36.3	35.3	93.3						
HILLSDALE ELEMENTARY	85.63%	75.14%	76.60%	28.3	91.9	94.1		Universal Free	Breakfast in the Classroom	Breakfast in the Classroom	Breakfast in the Classroom	
HILLSIDE ELEMENTARY	57.91%	56.28%	52.61%	17.3	85.5	93.0		Universal Free		Breakfast in the Classroom	Breakfast in the Classroom	
HOWARD R DRIGGS ELEMENTARY	12.44%	9.64%	8.31%	20.6	23.8	24.5						
HUNTER ELEMENTARY	67.57%	52.87%	50.79%	45.5	95.8	102.4		Universal Free	Breakfast in the Classroom	Breakfast in the Classroom	Breakfast in the Classroom	
HUNTER HIGH	46.68%	45.32%	44.31%	25.6	26.1	27.4						
HUNTER JR HIGH	48.74%	48.59%	48.73%	26.5	23.4	68.5		Universal Free			Breakfast in the Classroom	
JACKLING ELEMENTARY	71.30%	67.23%	63.81%	40.5	38.1	89.4						
JAMES E MOSS ELEMENTARY	87.42%	85.74%	86.20%	55.9	89.2	96.0		Universal Free	Breakfast in the Classroom	Breakfast in the Classroom	Breakfast in the Classroom	
JIM BRIDGER ELEMENTARY	55.02%	53.89%	52.98%	31.8	28.8	28.6						
JOHN C FREMONT ELEMENTARY	63.77%	58.61%	52.73%	35.1	31.8	31.0						
JOHN F KENNEDY JR HIGH	67.96%	67.88%	60.75%	21.7	22.5	30.0		Universal Free			Breakfast in the Classroom	
KEARNS HIGH	51.52%	49.74%	47.28%	27.9	24.7	23.9						
KEARNS JR HIGH	74.90%	73.65%	73.65%	31.7	31.3	28.0						
KEARNS-ST. ANN	51.27%	49.17%	51.79%	34.1	33.5	40.1						
LAKE RIDGE ELEMENTARY	62.99%	57.97%	52.72%	33.7	75.7	108.5		Universal Free		Breakfast in the Classroom	Breakfast in the Classroom	
LINCOLN ELEMENTARY	89.69%	76.27%	74.05%	51.3	86.4	89.5		Universal Free	Breakfast in the Classroom	Breakfast in the Classroom	Breakfast in the Classroom	
MAGNA ELEMENTARY	68.62%	62.19%	62.21%	48.7	100.7	99.4		Universal Free	Breakfast in the Classroom	Breakfast in the Classroom	Breakfast in the Classroom	
MANA ACADEMY	52.15%	49.90%	68.20%	46.7	50.3	36.9						
MATHESON JR HIGH	57.06%	54.88%	51.85%	23.5	25.7	24.6						
MILLCREEK ELEMENTARY	58.66%	54.80%	53.87%	32.9	29.5	26.1						
MONROE ELEMENTARY	89.29%	80.00%	81.74%	42.0	84.7	89.5		Universal Free		Breakfast in the Classroom	Breakfast in the Classroom	

GRANITE SCHOOL DISTRICT, cont.

	SY 2014-15	SY 2015-16	SY 2016-17	SY 2014-15	SY 2015-16	SY 2016-17	SY 2014-15	SY 2015-16	SY 2016-17	SY 2014-15	SY 2015-16	SY 2016-17
SCHOOL	% F/R			% F/R Students Participating in SBP			Offer Breakfast at No Charge			Alternative Service Model		
MORNINGSIDE ELEMENTARY	13.65%	12.32%	10.68%	NA	NA	NA						
OAKRIDGE ELEMENTARY	6.32%	5.94%	5-9%	NA	NA	NA						
OAKWOOD ELEMENTARY	17.61%	13.06%	10-19%	NA	NA	NA						
OLYMPUS HIGH	19.18%	17.07%	16.31%	30.5	25.6	20.3						
OLYMPUS JR HIGH	11.75%	11.93%	11.31%	NA	NA	NA						
OQUIRRI HILLS ELEMENTARY	75.32%	64.44%	67.15%	51.8	91.2	94.6		Universal Free	Breakfast in the Classroom	Breakfast in the Classroom	Breakfast in the Classroom	
PACIFIC HERITAGE ACADEMY	65.80%	60.00%	54.85%	34.7	31.5	26.1						
PHILO T FARNSWORTH ELEMENTARY	72.25%	65.97%	66.50%	42.6	94.4	99.5		Universal Free	Breakfast in the Classroom	Breakfast in the Classroom	Breakfast in the Classroom	
PIONEER ELEMENTARY	75.77%	72.96%	68.31%	38.6	35.6	35.9						
PLEASANT GREEN ELEMENTARY	58.49%	50.14%	47.03%	40.7	40.1	43.3						
PLYMOUTH ELEMENTARY	68.59%	65.01%	63.37%	33.2	97.3	110.3		Universal Free	Breakfast in the Classroom	Breakfast in the Classroom	Breakfast in the Classroom	
REDWOOD ELEMENTARY	88.42%	78.52%	79.35%	35.5	86.9	100.4		Universal Free		Breakfast in the Classroom	Breakfast in the Classroom	
ROBERT FROST ELEMENTARY	68.37%	65.98%	56.12%	30.9	59.3	89.0		Universal Free		Breakfast in the Classroom	Breakfast in the Classroom	
ROLLING MEADOWS ELEMENTARY	65.33%	63.81%	65.27%	28.2	22.6	30.8		Universal Free			Breakfast in the Classroom	
ROOSEVELT ELEMENTARY	91.36%	83.93%	81.38%	50.4	92.6	98.5		Universal Free	Breakfast in the Classroom	Breakfast in the Classroom	Breakfast in the Classroom	
ROSECREST ELEMENTARY	23.54%	21.31%	18.61%	NA	NA	NA						
SAINT ANDREW CATHOLIC	13.92%	18.36%	17.97%	33.1	20.6	11.2						
SILVER HILLS ELEMENTARY	62.10%	56.22%	53.88%	33.5	89.8	87.2		Universal Free	Breakfast in the Classroom	Breakfast in the Classroom	Breakfast in the Classroom	
SKYLINE HIGH	8.81%	7.99%	8.14%	NA	17.9	15.8						
SOUTH KEARNS ELEMENTARY	79.08%	62.79%	71.36%	45.5	84.2	82.1		Universal Free	Breakfast in the Classroom	Breakfast in the Classroom	Breakfast in the Classroom	
SPRING LANE ELEMENTARY	37.64%	33.73%	33.70%	NA	NA	NA						
ST. VINCENT	4.17%	5.02%	5-9%	NA	NA	NA						
STANSBURY ELEMENTARY*	87.12%	84.68%	87.94%	91.3	89.0	92.7		Universal Free	Breakfast in the Classroom	Breakfast in the Classroom	Breakfast in the Classroom	
TAYLORSVILLE ELEMENTARY	71.79%	65.81%	63.57%	43.0	101.4	108.0				Breakfast in the Classroom	Breakfast in the Classroom	
TAYLORSVILLE HIGH	39.71%	38.14%	37.91%	32.7	27.7	27.2						
THOMAS JEFFERSON JR HIGH	52.00%	47.16%	48.93%	23.7	19.1	24.3						
THOMAS W BACCHUS ELEMENTARY	47.41%	52.18%	39.92%	32.8	66.0	104.4		Universal Free		Breakfast in the Classroom	Breakfast in the Classroom	
TWIN PEAKS ELEMENTARY	49.27%	41.44%	41.19%	NA	103.5	99.7		Universal Free		Breakfast in the Classroom	Breakfast in the Classroom	
UPLAND TERRACE ELEMENTARY	14.26%	13.93%	12.41%	NA	NA	NA						
UTAH INTERNATIONAL CHARTER SCHOOL	93.83%	92.04%	79.28%	36.7	44.9	47.5						
VALLEY CREST ELEMENTARY	60.82%	57.08%	54.09%	33.9	27.3	26.7						
VALLEY JR HIGH	68.47%	64.54%	65.22%	26.1	27.8	22.8						
VISTA ELEMENTARY	56.75%	54.05%	52.10%	30.2	34.6	27.1						

GRANITE SCHOOL DISTRICT, cont.

	SY 2014-15	SY 2015-16	SY 2016-17	SY 2014-15	SY 2015-16	SY 2016-17	SY 2014-15	SY 2015-16	SY 2016-17	SY 2014-15	SY 2015-16	SY 2016-17
SCHOOL	% F/R			% F/R Students Participating in SBP			Offer Breakfast at No Charge			Alternative Service Model		
WALLACE STEGNER ACADEMY	NA	NA	91.27%	NA	NA	117.4						Breakfast in the Classroom
WASATCH JR HIGH	10.22%	9.27%	8.42%	NA	NA	NA						
WEST KEARNS ELEMENTARY	80.52%	67.47%	68.19%	32.3	28.9	27.0						
WEST VALLEY ELEMENTARY	54.55%	51.04%	46.08%	27.3	78.0	109.3			Universal Free		Breakfast in the Classroom	Breakfast in the Classroom
WESTBROOK ELEMENTARY	52.42%	45.79%	43.19%	31.7	29.1	109.2					Breakfast in the Classroom	
WESTERN HILLS ELEMENTARY	80.40%	71.52%	74.77%	34.2	37.0	33.8						
WESTLAKE JUNIOR HIGH	84.98%	82.72%	76.69%	28.9	28.7	128.0					Breakfast in the Classroom	
WHITTIER ELEMENTARY	55.02%	51.09%	51.08%	36.0	36.0	34.1						
WILLIAM PENN ELEMENTARY	27.20%	24.66%	20-29%	33.0	40.8	42.5						
WOODROW WILSON ELEMENTARY	79.18%	65.88%	74.31%	59.1	85.5	98.6			Universal Free	Breakfast in the Classroom	Breakfast in the Classroom	Breakfast in the Classroom
WOODSTOCK ELEMENTARY	32.73%	27.90%	23.60%	NA	NA	NA						
TOTALS	51.00%	49.27%	47.12%	36.6	52.4	60.8	0	0	30	19	32	34

IRON SCHOOL DISTRICT

	SY 2014-15	SY 2015-16	SY 2016-17	SY 2014-15	SY 2015-16	SY 2016-17	SY 2014-15	SY 2015-16	SY 2016-17	SY 2014-15	SY 2015-16	SY 2016-17
SCHOOL	% F/R			% F/R Students Participating in SBP			Offer Breakfast at No Charge			Alternative Service Model		
CANYON VIEW HIGH SCHOOL	42.42%	39.86%	40.02%	29.6	28.9	32.4						
CANYON VIEW MIDDLE	52.18%	49.06%	49.67%	29.8	24.8	26.9						
CEDAR CITY HIGH	34.70%	33.33%	29.58%	30.9	33.5	31.5						
CEDAR EAST ELEMENTARY	63.14%	61.87%	64.66%	40.4	38.6	41.4						
CEDAR MIDDLE	41.99%	38.46%	37.43%	26.7	24.0	22.6						
CEDAR NORTH ELEMENTARY	60.00%	60.93%	50.88%	44.9	49.0	41.0						
CEDAR SOUTH ELEMENTARY	36.98%	32.14%	31.91%	20.4	23.6	30.4						
ENOCH ELEMENTARY	55.08%	55.32%	53.11%	41.4	40.2	36.3						
ESCALANTE VALLEY ELEMENTARY	80.45%	79.07%	81.69%	73.6	70.6	72.5						
FIDDLERS CANYON ELEMENTARY	49.36%	49.21%	48.26%	35.1	34.5	47.8						
GATEWAY PREPARATORY ACADEMY	65.50%	63.17%	60.16%	55.1	49.1	37.1						
IRON SPRINGS ELEMENTARY	41.43%	33.29%	37.34%	42.4	39.5	46.2						
PAROWAN ELEMENTARY/HIGH	42.65%	46.85%	46.75%	31.8	33.8	35.2						
SOUTHWEST EDUC ACAD	64.29%	63.16%	50-59%	70.8	75.5	69.8						
THREE PEAKS ELEMENTARY	58.02%	57.68%	55.52%	40.1	37.3	43.6						
TOTALS	52.55%	50.89%	45-49%	40.9	40.2	41.0	0	0	0	0	0	0

JORDAN SCHOOL DISTRICT

	SY 2014-15	SY 2015-16	SY 2016-17	SY 2014-15	SY 2015-16	SY 2016-17	SY 2014-15	SY 2015-16	SY 2016-17	SY 2014-15	SY 2015-16	SY 2016-17
SCHOOL	% F/R			% F/R Students Participating in SBP			Offer Breakfast at No Charge			Alternative Service Model		
BASTIAN ELEMENTARY	NA	NA	27.49%	NA	NA	NA						
BINGHAM HIGH	11.91%	10.65%	10.18%	27.3	28.5	22.5						
BLACKRIDGE ELEMENTARY	9.24%	7.81%	6.47%	NA	NA	NA						
BLUFFDALE ELEMENTARY	23.30%	20.71%	22.23%	NA	NA	NA						
BUTTERFIELD CANYON ELEMENTARY	14.48%	11.41%	10.26%	NA	NA	NA						

JORDAN SCHOOL DISTRICT, cont.

	SY 2014-15	SY 2015-16	SY 2016-17	SY 2014-15	SY 2015-16	SY 2016-17	SY 2014-15	SY 2015-16	SY 2016-17	SY 2014-15	SY 2015-16	SY 2016-17
SCHOOL	% F/R			% F/R Students Participating in SBP			Offer Breakfast at No Charge			Alternative Service Model		
COLUMBIA ELEMENTARY*	69.62%	61.37%	61.11%	38.9	37.8	35.1						
COPPER CANYON ELEMENTARY	41.48%	34.81%	34.86%	31.9	32.4	28.8						
COPPER HILLS HIGH	22.89%	21.44%	20.92%	24.8	27.2	29.3						
COPPER MOUNTAIN MIDDLE	20.66%	16.50%	15.54%	NA	NA	NA						
DAYBREAK ELEMENTARY	15.30%	12.10%	12.40%	NA	NA	NA						
EASTLAKE ELEMENTARY	10.26%	7.23%	7.03%	19.2	16.4	15.9						
ELK MEADOWS ELEMENTARY	18.29%	18.52%	17.96%	27.0	23.5	26.9						
ELKRIDGE MIDDLE	16.80%	17.14%	15.81%	5.8	8.8	4.6						
FALCON RIDGE ELEMENTARY	28.59%	29.38%	26.88%	29.2	24.4	24.8						
FOOTHILLS ELEMENTARY	13.93%	11.66%	11.29%	16.7	17.1	16.3						
FORT HERRIMAN MIDDLE	14.43%	12.60%	10.33%	NA	NA	NA						
FOX HOLLOW ELEMENTARY	21.35%	18.25%	18.73%	28.0	26.4	24.5						
GOLDEN FIELDS ELEMENTARY	NA	NA	NA	NA	NA	NA						
HAYDEN PEAK ELEMENTARY	25.72%	24.79%	25.21%	27.0	28.2	28.2						
HEARTLAND ELEMENTARY*	57.81%	59.67%	56.47%	29.9	30.1	32.3						
HERRIMAN ELEMENTARY	18.69%	20.18%	14.16%	NA	NA	NA						
HERRIMAN HIGH	13.05%	11.98%	11.55%	26.5	28.4	26.2						
JOEL P JENSEN MIDDLE*	46.29%	44.17%	44.42%	23.1	24.7	26.0						
JORDAN ACADEMY FOR TECHNOLOGY & CAREERS	NA	NA	NA	NA	NA	43.2						
JORDAN APPLIED TECHNOLOGY CENTER - NORTH	NA	NA	NA	NA	71.0	131.6						
JORDAN HILLS ELEMENTARY	28.90%	25.39%	25.04%	14.2	15.7	19.3						
JORDAN RIDGE ELEMENTARY	12.60%	10.13%	8.50%	NA	NA	NA						
KAURI SUE HAMILTON SCHOOL	30.81%	59.73%	29.91%	53.0	41.9	39.7						
MAJESTIC ELEMENTARY*	74.21%	79.88%	80.25%	37.8	30.8	29.6						
MIDAS CREEK ELEMENTARY	14.10%	11.64%	11.18%	NA	NA	NA						
MONTE VISTA ELEMENTARY	13.75%	12.41%	11.12%	NA	NA	NA						
MOUNTAIN SHADOWS ELEMENTARY	38.24%	39.50%	38.74%	29.2	27.0	24.0						
OAKCREST ELEMENTARY	19.22%	18.02%	15.89%	NA	NA	NA						
OQUIRRH ELEMENTARY*	52.98%	52.62%	54.10%	33.6	30.8	30.7						
OQUIRRH HILLS MIDDLE	15.71%	16.04%	13.52%	NA	NA	NA						
RIVERSIDE ELEMENTARY*	48.43%	46.28%	45.50%	29.2	31.4	27.6						
RIVERTON ELEMENTARY	24.77%	22.02%	19.94%	NA	NA	NA						
RIVERTON HIGH	12.13%	10.75%	10.94%	24.4	24.2	20.2						
ROSAMOND ELEMENTARY	25.98%	20.23%	18.06%	22.6	18.9	16.7						
ROSE CREEK ELEMENTARY	18.36%	12.38%	13.52%	14.1	NA	NA						
SILVER CREST ELEMENTARY	26.78%	20.02%	21.90%	NA	NA	NA						
SOUTH HILLS MIDDLE	16.32%	15.96%	15.43%	15.3	11.4	13.8						
SOUTH JORDAN ELEMENTARY	16.95%	12.02%	12.55%	26.6	22.8	16.5						
SOUTH JORDAN MIDDLE	13.03%	10.99%	10.76%	13.1	12.3	13.6						
SOUTH VALLEY	52.14%	43.59%	38.89%	NA	NA	NA						
SOUTHLAND ELEMENTARY	12.71%	12.18%	11.40%	24.6	13.4	14.8						
SUNSET RIDGE MIDDLE	27.96%	24.06%	24.57%	17.9	20.1	16.2						
TERRA LINDA ELEMENTARY*	37.81%	38.74%	42.88%	33.5	30.4	31.7						
VALLEY HIGH*	34.40%	26.96%	30.49%	52.3	59.3	57.9						
WELBY ELEMENTARY	16.07%	16.48%	17.69%	22.8	20.1	17.9						
WEST HILLS MIDDLE	30.63%	31.21%	31.62%	14.9	14.0	10.8						

JORDAN SCHOOL DISTRICT, cont.

	SY 2014-15	SY 2015-16	SY 2016-17	SY 2014-15	SY 2015-16	SY 2016-17	SY 2014-15	SY 2015-16	SY 2016-17	SY 2014-15	SY 2015-16	SY 2016-17
SCHOOL	% F/R			% F/R Students Participating in SBP			Offer Breakfast at No Charge			Alternative Service Model		
WEST JORDAN ELEMENTARY*	50.82%	40.74%	41.42%	30.5	30.7	29.8						
WEST JORDAN HIGH*	37.76%	35.36%	37.09%	26.6	25.3	25.8						
WEST JORDAN MIDDLE*	48.34%	49.21%	49.21%	17.5	16.9	14.4						
WESTLAND ELEMENTARY	27.57%	29.17%	27.67%	36.6	39.0	40.9						
WESTVALE ELEMENTARY*	46.24%	44.69%	46.33%	29.9	32.7	33.2						
TOTALS	24.08%	26.17%	21.35%	26.4	25.0	28.0	0	0	0	0	0	0

JUAB SCHOOL DISTRICT

	SY 2014-15	SY 2015-16	SY 2016-17	SY 2014-15	SY 2015-16	SY 2016-17	SY 2014-15	SY 2015-16	SY 2016-17	SY 2014-15	SY 2015-16	SY 2016-17
SCHOOL	% F/R			% F/R Students Participating in SBP			Offer Breakfast at No Charge			Alternative Service Model		
JUAB HIGH	29.30%	27.29%	27.15%	36.0	33.6	36.9						
JUAB JR HIGH	33.72%	32.66%	36.91%	22.9	25.1	20.6						
MONA ELEMENTARY	38.85%	39.65%	38.52%	50.0	43.2	45.1						
NEBO VIEW ELEMENTARY	31.29%	32.97%	37.99%	33.3	37.4	29.7						
RED CLIFFS ELEMENTARY	40.69%	41.47%	36.42%	40.4	35.7	41.8						
TOTALS	34.59%	34.81%	34.37%	36.5	35.0	34.8	0	0	0	0	0	0

KANE SCHOOL DISTRICT

	SY 2014-15	SY 2015-16	SY 2016-17	SY 2014-15	SY 2015-16	SY 2016-17	SY 2014-15	SY 2015-16	SY 2016-17	SY 2014-15	SY 2015-16	SY 2016-17
SCHOOL	% F/R			% F/R Students Participating in SBP			Offer Breakfast at No Charge			Alternative Service Model		
BIG WATER ELEMENTARY	68.06%	64.29%	73.33%	56.6	58.9	62.7					Nudge	Nudge
KANAB ELEMENTARY*	49.89%	47.17%	40.25%	24.6	24.6	19.7					"Grab and Go"	"Grab and Go"
KANAB HIGH	34.73%	33.33%	32.39%	66.0	50.9	55.6						
KANAB MIDDLE*	35.29%	46.21%	47.95%	32.5	31.5	23.7					"Grab and Go"	"Grab and Go"
LAKE POWELL	60.69%	60.69%	40.49%	68.1	71.9	69.6						
VALLEY ELEMENTARY	47.79%	52.31%	46.00%	26.9	34.3	30.1						
VALLEY HIGH	35.66%	40.98%	41.73%	50.5	53.1	55.2						
TOTALS	48.08%	47.38%	40.45%	46.5	46.5	45.2	0	0	0	3	3	0

LOGAN SCHOOL DISTRICT

	SY 2014-15	SY 2015-16	SY 2016-17	SY 2014-15	SY 2015-16	SY 2016-17	SY 2014-15	SY 2015-16	SY 2016-17	SY 2014-15	SY 2015-16	SY 2016-17
SCHOOL	% F/R			% F/R Students Participating in SBP			Offer Breakfast at No Charge			Alternative Service Model		
ADAMS ELEMENTARY	75.07%	69.30%	68.64%	52.6	54.5	57.3	Universal Free	Universal Free	Universal Free			
BRIDGER ELEMENTARY	70.17%	72.01%	68.70%	52.4	54.6	54.2	Universal Free	Universal Free	Universal Free			
ELLIS ELEMENTARY	75.00%	75.37%	75.53%	43.1	50.0	45.8	Universal Free	Universal Free	Universal Free			
HILLCREST ELEMENTARY	48.97%	48.97%	45.71%	59.9	59.7	52.5	Universal Free	Universal Free	Universal Free			
LOGAN HIGH	42.02%	44.67%	43.28%	36.2	34.3	28.0	Universal Free	Universal Free	Universal Free			
LOGAN SO CAMPUS	74.73%	55.70%	55.71%	NA	NA	NA						
MOUNT LOGAN MIDDLE	59.92%	57.40%	55.05%	25.7	24.6	23.2	Universal Free	Universal Free	Universal Free			
WILSON ELEMENTARY	42.21%	46.29%	45.37%	49.8	60.3	60.9	Universal Free	Universal Free	Universal Free			
WOODRUFF ELEMENTARY	69.96%	71.82%	68.60%	42.9	42.4	44.9	Universal Free	Universal Free	Universal Free			
TOTALS	57.85%	60.17%	58.51%	45.3	47.6	45.9	8	8	8	0	0	0

MILLARD SCHOOL DISTRICT

	SY 2014-15	SY 2015-16	SY 2016-17	SY 2014-15	SY 2015-16	SY 2016-17	SY 2014-15	SY 2015-16	SY 2016-17	SY 2014-15	SY 2015-16	SY 2016-17
SCHOOL	% F/R			% F/R Students Participating in SBP			Offer Breakfast at No Charge			Alternative Service Model		
DELTA ELEMENTARY (North & South)	58.89%	60.20%	NA	37.3	NA	NA						
DELTA HIGH	37.98%	41.03%	45.44%	16.5	19.2	35.2						
DELTA MIDDLE	53.81%	53.81%	51.54%	23.3	24.9	23.2					Vending Machine	
DELTA NORTH	NA	NA	62.10%	NA	36.5	41.3						
DELTA SOUTH	NA	NA	44.65%	NA	49.5	38.4						
FILLMORE ELEMENTARY	56.45%	58.56%	58.89%	50.7	56.9	60.1						
FILLMORE MIDDLE	58.68%	55.00%	56.79%	35.6	29.8	30.0						
MILLARD HIGH	37.98%	45.37%	45.44%	34.4	46.6	36.4						
TOTALS	52.46%	52.33%	52.15%	33.0	37.6	37.8	0	0	0	0	1	0

MORGAN SCHOOL DISTRICT

	SY 2014-15	SY 2015-16	SY 2016-17	SY 2014-15	SY 2015-16	SY 2016-17	SY 2014-15	SY 2015-16	SY 2016-17	SY 2014-15	SY 2015-16	SY 2016-17
SCHOOL	% F/R			% F/R Students Participating in SBP			Offer Breakfast at No Charge			Alternative Service Model		
MORGAN ELEMENTARY	49.18%	20.99%	17.87%	20.6	17.6	19.1						
MORGAN HIGH	10.58%	12.78%	9.73%	NA	NA	NA						
MORGAN MIDDLE	15.07%	13.02%	13.11%	NA	15.6	13.0						
MOUNTAIN GREEN ELEMENTARY	8.75%	9.06%	7.98%	NA	NA	NA						
TOTALS	20.90%	13.96%	12.36%	20.6	16.6	16.1	0	0	0	0	0	0

MURRAY SCHOOL DISTRICT

	SY 2014-15	SY 2015-16	SY 2016-17	SY 2014-15	SY 2015-16	SY 2016-17	SY 2014-15	SY 2015-16	SY 2016-17	SY 2014-15	SY 2015-16	SY 2016-17
SCHOOL	% F/R			% F/R Students Participating in SBP			Offer Breakfast at No Charge			Alternative Service Model		
GRANT ELEMENTARY	23.82%	23.02%	19.74%	30.1	30.2	33.0						
HILLCREST JR HIGH	43.33%	44.77%	42.79%	19.1	15.7	19.1						
HORIZON ELEMENTARY	45.39%	44.27%	38.01%	33.1	37.7	36.2						
KAIROS ACADEMY	52.73%	64.71%	60.69%	67.6	28.6	17.2						
LIBERTY ELEMENTARY	34.69%	33.17%	36.61%	34.7	38.5	33.4						
LONGVIEW ELEMENTARY	28.04%	23.52%	25.71%	23.2	26.3	33.5						
MCMILLAN ELEMENTARY	29.78%	29.13%	31.12%	48.4	41.6	41.4						
MURRAY HIGH	27.56%	27.02%	19.29%	17.0	17.4	17.3						
PARKSIDE ELEMENTARY	58.01%	59.12%	61.29%	37.1	30.4	32.0						
RIVERVIEW JR HIGH	26.25%	23.82%	21.93%	35.7	46.5	34.4						
VIEWMONT ELEMENTARY	23.99%	21.21%	20.70%	35.0	41.1	43.1						
TOTALS	33.24%	35.80%	31.28%	34.6	32.2	31.0	0	0	0	0	0	0

NEBO SCHOOL DISTRICT

	SY 2014-15	SY 2015-16	SY 2016-17	SY 2014-15	SY 2015-16	SY 2016-17	SY 2014-15	SY 2015-16	SY 2016-17	SY 2014-15	SY 2015-16	SY 2016-17
SCHOOL	% F/R			% F/R Students Participating in SBP			Offer Breakfast at No Charge			Alternative Service Model		
ART CITY ELEMENTARY	37.12%	38.04%	34.72%	32.2	36.0	41.1						
BARNETT ELEMENTARY	57.87%	55.15%	54.91%	47.2	40.4	42.4						
BROCKBANK ELEMENTARY	43.55%	39.75%	38.00%	30.1	24.5	26.3						
BROOKSIDE ELEMENTARY	41.14%	40.82%	33.70%	46.2	39.7	38.4						
CANYON ELEMENTARY	20.33%	19.48%	16.51%	23.5	28.9	19.7						
CHERRY CREEK ELEMENTARY	50.69%	46.07%	52.31%	33.8	29.4	36.7						
DIAMOND FORK JR HIGH	37.91%	39.13%	34.73%	26.3	24.4	16.2						

NEBO SCHOOL DISTRICT, cont.

	SY 2014-15	SY 2015-16	SY 2016-17	SY 2014-15	SY 2015-16	SY 2016-17	SY 2014-15	SY 2015-16	SY 2016-17	SY 2014-15	SY 2015-16	SY 2016-17
SCHOOL	% F/R			% F/R Students Participating in SBP			Offer Breakfast at No Charge			Alternative Service Model		
EAST MEADOWS ELEMENTARY	26.60%	27.34%	23.03%	41.1	33.2	32.7						
FOOTHILLS ELEMENTARY	24.14%	21.28%	18.78%	23.9	21.2	21.9						
GOSHEN ELEMENTARY	51.91%	49.72%	51.87%	38.1	44.2	36.1						
HOBBLE CREEK ELEMENTARY	15.41%	16.09%	14.31%	14.9	17.8	20.8						
LANDMARK HIGH	61.56%	62.29%	55.92%	67.2	44.5	43.0						
LARSEN ELEMENTARY	47.30%	49.46%	44.31%	37.7	30.8	38.4						
MAPLE MOUNTAIN HIGH	19.83%	18.21%	16.37%	35.3	32.0	27.0						
MAPLE RIDGE ELEMENTARY	19.83%	19.53%	16.78%	NA	30.2	28.4						
MAPLETON ELEMENTARY	19.13%	15.47%	14.42%	24.9	35.2	27.5						
MAPLETON JR HIGH	22.10%	20.84%	19.36%	24.1	23.6	20.2						
MEADOW BROOKE ELEMENTARY	NA	41.60%	41.60%	NA	NA	32.7						
MT NEBO JR HIGH	52.70%	51.71%	51.44%	30.3	29.5	24.2						
MT. LOAFER ELEMENTARY	21.65%	22.50%	21.84%	34.8	28.7	35.4						
ORCHARD HILLS ELEMENTARY	40.93%	39.18%	37.30%	35.0	29.2	33.2						
PARK ELEMENTARY	63.21%	61.52%	62.32%	35.8	37.5	37.4						
PARKVIEW ELEMENTARY	40.55%	36.73%	37.32%	37.9	40.9	38.4						
PAYSON HIGH	37.79%	33.69%	33.75%	43.3	40.6	39.6						
PAYSON JR HIGH	39.65%	37.85%	37.28%	30.2	28.0	22.2						
REES ELEMENTARY*	55.91%	58.06%	57.81%	48.7	54.9	56.5	Universal Free	Universal Free	Universal Free	Breakfast in the Classroom		
RIVERVIEW ELEMENTARY	28.88%	27.55%	24.30%	26.1	22.8	23.1						
SAGE CREEK ELEMENTARY	37.04%	36.08%	31.19%	40.2	38.0	40.4						
SALEM ELEMENTARY	31.02%	31.33%	25.05%	31.7	27.4	23.6						
SALEM HIGH	22.91%	23.05%	20.72%	31.2	33.8	33.9						
SALEM JUNIOR HIGH	25.69%	25.91%	19.82%	28.8	29.4	29.3						
SANTAQUIN	50.36%	47.36%	43.48%	28.4	20.3	23.8						
SIERRA BONITA ELEMENTARY	18.68%	17.07%	16.73%	28.8	28.6	26.6						
SPANISH FORK HIGH	27.04%	23.93%	22.79%	43.6	37.9	36.2				Breakfast Vending		
SPANISH FORK JR HIGH	27.61%	26.06%	25.27%	30.5	30.3	23.7						
SPANISH OAKS ELEMENTARY	28.93%	27.95%	26.73%	27.8	25.3	19.8						
SPRING LAKE ELEMENTARY	35.03%	36.84%	31.78%	32.9	25.5	25.4						
SPRINGVILLE HIGH	28.08%	27.37%	24.03%	43.0	40.8	45.6						
SPRINGVILLE JR HIGH	36.06%	39.00%	36.78%	28.6	30.6	29.3						
TAYLOR ELEMENTARY	53.53%	45.89%	50.53%	37.2	38.5	47.2						
WESTSIDE ELEMENTARY	49.02%	49.76%	47.24%	37.5	35.1	32.7						
WILSON ELEMENTARY	63.70%	69.20%	61.03%	43.5	41.5	45.8						
TOTALS	34.97%	36.09%	30-35%	34.6	32.5	32.0	1	1	1	2	0	0

NORTH SANPETE SCHOOL DISTRICT

	SY 2014-15	SY 2015-16	SY 2016-17	SY 2014-15	SY 2015-16	SY 2016-17	SY 2014-15	SY 2015-16	SY 2016-17	SY 2014-15	SY 2015-16	SY 2016-17
SCHOOL	% F/R			% F/R Students Participating in SBP			Offer Breakfast at No Charge			Alternative Service Model		
FAIRVIEW ELEMENTARY*	47.70%	54.30%	45.30%	43.6	41.8	39.5				"Grab and Go"		
FOUNTAIN GREEN ELEMENTARY*	52.63%	62.22%	51.09%	39.8	41.3	47.6				"Grab and Go"		
MORONI ELEMENTARY*	67.47%	68.98%	68.62%	41.5	42.3	45.7				"Grab and Go"		
MT PLEASANT ELEMENTARY*	62.37%	62.29%	60.75%	33.9	34.0	40.5				"Grab and Go"		

NORTH SANPETE SCHOOL DISTRICT, cont.

	SY 2014-15	SY 2015-16	SY 2016-17	SY 2014-15	SY 2015-16	SY 2016-17	SY 2014-15	SY 2015-16	SY 2016-17	SY 2014-15	SY 2015-16	SY 2016-17
SCHOOL	% F/R			% F/R Students Participating in SBP			Offer Breakfast at No Charge			Alternative Service Model		
NORTH SANPETE HIGH*	55.01%	51.93%	43.27%	41.3	46.5	43.4				"Grab and Go"	Second Chance Breakfast	
NORTH SANPETE MIDDLE*	56.62%	57.35%	50.73%	21.4	23.6	23.2				"Grab and Go"		
PLEASANT CREEK	95.16%	95.16%	≥95%	NA	97.1	100.3			Community Eligibility Provision			
SPRING CITY ELEMENTARY*	51.40%	60.00%	60.32%	52.9	48.0	50.0				"Grab and Go"		
TOTALS	57.26%	64.03%	50-55%	39.2	46.8	48.8	0	0	1	7	1	0

NORTH SUMMIT SCHOOL DISTRICT

	SY 2014-15	SY 2015-16	SY 2016-17	SY 2014-15	SY 2015-16	SY 2016-17	SY 2014-15	SY 2015-16	SY 2016-17	SY 2014-15	SY 2015-16	SY 2016-17
SCHOOL	% F/R			% F/R Students Participating in SBP			Offer Breakfast at No Charge			Alternative Service Model		
NORTH SUMMIT ELEMENTARY	37.97%	34.15%	35.32%	47.9	43.8	36.5						
NORTH SUMMIT MIDDLE	18.75%	31.03%	32.39%	21.5	16.4	16.6						
NORTH SUMMIT HIGH	26.99%	20.24%	25.76%	NA	NA	NA						
TOTALS	27.90%	28.47%	31.49%	34.7	30.1	26.6	0	0	0	0	0	0

OGDEN SCHOOL DISTRICT

	SY 2014-15	SY 2015-16	SY 2016-17	SY 2014-15	SY 2015-16	SY 2016-17	SY 2014-15	SY 2015-16	SY 2016-17	SY 2014-15	SY 2015-16	SY 2016-17
SCHOOL	% F/R			% F/R Students Participating in SBP			Offer Breakfast at No Charge			Alternative Service Model		
BEN LOMOND HIGH*	74.51%	73.82%	69.14%	45.1	51.3	52.2				Breakfast Vending	Breakfast Vending	
BONNEVILLE ELEMENTARY	88.75%	90.80%	90-95%	91.5	90.9	85.4	Community Eligibility Provision	Community Eligibility Provision	Community Eligibility Provision	"Grab and Go" to the Classroom	"Grab and Go" to the Classroom	"Grab and Go" to the Classroom
GEORGE WASHINGTON HIGH	94.89%	93.10%	90-95%	61.9	59.5	65.4	Community Eligibility Provision	Community Eligibility Provision	Community Eligibility Provision			
GRAMERCY ELEMENTARY	88.89%	86.50%	80-89%	63.2	82.7	85.4	Community Eligibility Provision	Community Eligibility Provision	Community Eligibility Provision	"Grab and Go" to the Classroom	"Grab and Go" to the Classroom	"Grab and Go" to the Classroom
HERITAGE ELEMENTARY	75.24%	78.39%	78.39%	42.8	47.3	44.4			Community Eligibility Provision			
HIGHLAND JUNIOR HIGH	78.65%	80.16%	79.75%	34.1	34.9	32.9						
HILLCREST ELEMENTARY	82.07%	84.79%	81.82%	48.2	91.8	91.7		Universal Free	Community Eligibility Provision	"Grab and Go" to the Classroom	"Grab and Go" to the Classroom	"Grab and Go" to the Classroom
HORACE MANN ELEMENTARY	72.21%	72.42%	69.66%	45.8	47.7	44.5			Community Eligibility Provision			
JAMES MADISON ELEMENTARY	95.43%	≥99%	≥99%	85.8	85.5	86.0	Community Eligibility Provision	Community Eligibility Provision	Community Eligibility Provision	"Grab and Go" to the Classroom	"Grab and Go" to the Classroom	"Grab and Go" to the Classroom
LINCOLN ELEMENTARY	78.58%	80.20%	82.87%	47.5	56.8	53.2			Community Eligibility Provision			
MOUND FORT JUNIOR HIGH	88.90%	88.70%	80-89%	47.2	45.3	46.7	Community Eligibility Provision	Community Eligibility Provision	Community Eligibility Provision			
MOUNT OGDEN JUNIOR HIGH	62.27%	63.42%	62.44%	29.5	30.3	31.0						
NEW BRIDGE (FORMERLY DEE ELEMENTARY)	95.32%	86.80%	80-89%	61.1	60.2	88.6	Community Eligibility Provision	Community Eligibility Provision	Community Eligibility Provision			
ODYSSEY ELEMENTARY	95.44%	95.60%	≥95%	91.8	92.1	90.9	Community Eligibility Provision	Community Eligibility Provision	Community Eligibility Provision	"Grab and Go" to the Classroom	"Grab and Go" to the Classroom	"Grab and Go" to the Classroom
OGDEN HIGH	61.27%	63.35%	61.73%	52.4	51.0	51.6						
POLK ELEMENTARY	58.45%	56.66%	50.80%	52.6	57.2	61.7						

OGDEN SCHOOL DISTRICT, cont.

	SY 2014-15	SY 2015-16	SY 2016-17	SY 2014-15	SY 2015-16	SY 2016-17	SY 2014-15	SY 2015-16	SY 2016-17	SY 2014-15	SY 2015-16	SY 2016-17
SCHOOL	% F/R			% F/R Students Participating in SBP			Offer Breakfast at No Charge			Alternative Service Model		
SHADOW VALLEY ELEMENTARY	34.25%	33.22%	26.58%	45.7	46.6	44.1						
TAYLOR CANYON	59.20%	59.86%	59.11%	48.3	42.5	47.0						
THOMAS O. SMITH ELEMENTARY	89.60%	81.40%	80-89%	52.8	43.2	60.0	Provision 2	Community Eligibility Provision	Community Eligibility Provision			
WASATCH ELEMENTARY	55.74%	54.55%	49.00%	37.9	36.7	38.8						
TOTALS	74.94%	74.93%	73.89%	54.3	58.0	60.1	8	9	12	6	6	5

PARK CITY SCHOOL DISTRICT

	SY 2014-15	SY 2015-16	SY 2016-17	SY 2014-15	SY 2015-16	SY 2016-17	SY 2014-15	SY 2015-16	SY 2016-17	SY 2014-15	SY 2015-16	SY 2016-17
SCHOOL	% F/R			% F/R Students Participating in SBP			Offer Breakfast at No Charge			Alternative Service Model		
ECKER HILL MIDDLE	21.67%	19.95%	17.96%	17.2	14.7	9.9						
JEREMY RANCH ELEMENTARY	17.73%	14.77%	10-19%	40.0	38.6	33.9						
MCPOLIN ELEMENTARY	51.72%	44.47%	41.82%	36.5	29.8	31.6		Universal Free	Universal Free			
PARK CITY HIGH	13.06%	11.64%	10-19%	22.8	18.7	26.3						
PARLEY'S PARK ELEMENTARY	23.60%	21.52%	20-29%	52.6	58.8	49.8						
TRAILSIDE ELEMENTARY	15.82%	16.69%	17.05%	31.8	24.5	22.3						
TREASURE MOUNTAIN MIDDLE	17.84%	17.82%	10-19%	15.6	13.6	15.5						
TOTALS	20.62%	20.98%	19.12%	30.9	28.4	27.0	0	1	1	0	0	0

PIUTE SCHOOL DISTRICT

	SY 2014-15	SY 2015-16	SY 2016-17	SY 2014-15	SY 2015-16	SY 2016-17	SY 2014-15	SY 2015-16	SY 2016-17	SY 2014-15	SY 2015-16	SY 2016-17
SCHOOL	% F/R			% F/R Students Participating in SBP			Offer Breakfast at No Charge			Alternative Service Model		
CIRCLEVILLE ELEMENTARY	83.74%	82.76%	73.68%	43.6	45.8	51.4						
OSCARSON ELEMENTARY	85.42%	91.30%	87.80%	67.9	67.1	75.1						
PIUTE HIGH	62.26%	64.43%	59.09%	44.6	57.8	47.8						
TOTALS	77.14%	79.50%	68.28%	52.1	56.9	58.1	0	0	0	0	0	0

PROVO SCHOOL DISTRICT

	SY 2014-15	SY 2015-16	SY 2016-17	SY 2014-15	SY 2015-16	SY 2016-17	SY 2014-15	SY 2015-16	SY 2016-17	SY 2014-15	SY 2015-16	SY 2016-17
SCHOOL	% F/R			% F/R Students Participating in SBP			Offer Breakfast at No Charge			Alternative Service Model		
AMELIA EARHART ELEMENTARY	62.11%	61.78%	57.20%	42.6	45.5	45.0						
CANYON CREST ELEMENTARY	21.92%	21.07%	17.57%	19.2	22.7	23.2						
CENTENNIAL MIDDLE*	43.22%	42.08%	38.81%	32.1	34.2	29.4				"Grab and Go"	"Grab and Go"	
DIXON MIDDLE*	58.95%	55.45%	50.88%	23.8	24.8	24.6				"Grab and Go"	"Grab and Go"	
EDGEMONT ELEMENTARY	32.91%	27.66%	30.34%	45.6	44.4	45.9						
FRANKLIN ELEMENTARY	83.66%	82.95%	78.14%	39.9	36.1	34.7						
INDEPENDENCE HIGH	80.61%	74.14%	74.55%	50.8	53.6	58.3				Community Eligibility Provision		
LAKE VIEW ELEMENTARY	43.10%	38.75%	35.11%	31.0	28.6	31.2						
PROVO HIGH	41.20%	41.22%	39.77%	35.7	33.7	34.7						
PROVO PEAKS ELEMENTARY	68.50%	64.92%	64.60%	34.7	36.4	34.5						
PROVOST ELEMENTARY	58.61%	57.87%	54.10%	36.9	36.0	36.2						
ROCK CANYON ELEMENTARY	28.62%	28.14%	28.00%	21.5	32.3	33.7						
SPRING CREEK ELEMENTARY	84.21%	78.00%	73.13%	48.8	49.8	47.0						
SUNSET VIEW ELEMENTARY	68.16%	67.72%	61.47%	30.5	28.3	32.5						

PROVO SCHOOL DISTRICT, cont.

	SY 2014-15	SY 2015-16	SY 2016-17	SY 2014-15	SY 2015-16	SY 2016-17	SY 2014-15	SY 2015-16	SY 2016-17	SY 2014-15	SY 2015-16	SY 2016-17
SCHOOL	% F/R			% F/R Students Participating in SBP			Offer Breakfast at No Charge			Alternative Service Model		
TIMPANOGOS ELEMENTARY	80.14%	79.56%	75.89%	45.8	47.2	41.8						
TIMPVIEV HIGH	31.70%	29.96%	30.89%	42.3	43.4	43.5						
WASATCH ELEMENTARY	23.76%	22.23%	21.96%	32.5	31.3	27.9						
WESTRIDGE ELEMENTARY	44.07%	48.02%	44.49%	35.9	42.4	39.9						
TOTALS	53.08%	51.20%	43.67%	36.1	37.3	36.9	0	0	1	2	2	0

RICH SCHOOL DISTRICT

	SY 2014-15	SY 2015-16	SY 2016-17	SY 2014-15	SY 2015-16	SY 2016-17	SY 2014-15	SY 2015-16	SY 2016-17	SY 2014-15	SY 2015-16	SY 2016-17
SCHOOL	% F/R			% F/R Students Participating in SBP			Offer Breakfast at No Charge			Alternative Service Model		
NORTH RICH ELEMENTARY	39.84%	36.36%	39.29%	43.4	55.1	46.8						
RICH HIGH/SRES	29.41%	30.07%	33.56%	49.6	53.5	53.0						
RICH JR HIGH/NRES	32.11%	35.90%	41.04%	59.7	93.1	62.5						
SOUTH RICH ELEMENTARY	41.96%	51.79%	49.53%	86.5	53.9	88.3						
TOTAL	35.83%	38.53%	40.23%	59.8	63.9	62.7	0	0	0	0	0	0

SALT LAKE CITY SCHOOL DISTRICT

	SY 2014-15	SY 2015-16	SY 2016-17	SY 2014-15	SY 2015-16	SY 2016-17	SY 2014-15	SY 2015-16	SY 2016-17	SY 2014-15	SY 2015-16	SY 2016-17
SCHOOL	% F/R			% F/R Students Participating in SBP			Offer Breakfast at No Charge			Alternative Service Model		
BACKMAN ELEMENTARY	94.85%	93.64%	89.58%	40.6	56.5	85.7					"Grab and Go" to the Classroom	"Grab and Go" to the Classroom
BEACON HEIGHTS ELEMENTARY	22.36%	23.25%	17.67%	53.2	57.2	56.6						
BONNEVILLE ELEMENTARY	9.12%	6.99%	5.9%	25.7	29.0	29.7						
BRYANT MIDDLE SCHOOL	87.99%	86.99%	85.75%	43.8	48.3	45.3						
CLAYTON MIDDLE	35.65%	30.17%	26.48%	56.1	51.1	47.3						
DILWORTH ELEMENTARY	18.53%	14.79%	15.62%	43.1	55.2	48.2						
EAST HIGH	58.45%	56.45%	57.64%	45.6	52.7	52.0						
EDISON ELEMENTARY	93.97%	93.29%	93.45%	38.2	40.0	42.9						
EMERSON ELEMENTARY	33.22%	32.29%	30.91%	45.0	39.6	35.0						
ENSIGN ELEMENTARY	19.37%	21.54%	20.92%	60.0	52.2	46.8						
ESCALANTE ELEMENTARY	83.70%	81.80%	83.48%	37.4	39.6	34.9						
FRANKLIN ELEMENTARY	95.01%	96.37%	96.42%	30.5	26.8	31.9						
GLENDALE INTERMEDIATE	91.61%	91.11%	92.24%	35.6	38.9	41.4						
HAWTHORNE ELEMENTARY	31.32%	27.17%	25.06%	51.1	44.9	45.4						
HIGHLAND HIGH	42.27%	37.57%	37.56%	44.1	48.7	46.3						
HIGHLAND PARK ELEMENTARY	22.94%	22.56%	22.91%	40.9	33.8	31.4						
HILLSIDE MIDDLE	42.12%	38.75%	34.68%	38.2	47.0	42.3						
INDIAN HILLS ELEMENTARY	21.61%	19.29%	19.00%	52.0	43.5	38.9						
JACKSON ELEMENTARY	88.58%	89.04%	85.39%	47.5	44.4	41.3						
LIBERTY ELEMENTARY (was LINCOLN ELEMENTARY)	88.31%	93.20%	≥95%	49.5	49.2	44.5	Community Eligibility Provision	Community Eligibility Provision	Community Eligibility Provision			
M LYNN BENNION ELEMENTARY	83.92%	≥98%	≥98%	49.1	47.8	50.1	Community Eligibility Provision	Community Eligibility Provision	Community Eligibility Provision			
MEADOWLARK ELEMENTARY	94.37%	93.31%	93.07%	43.8	50.0	80.1					"Grab and Go" to the Classroom	"Grab and Go" to the Classroom
MOUNTAIN VIEW ELEMENTARY	87.52%	86.07%	83.79%	38.2	46.7	74.9					"Grab and Go" to the Classroom	"Grab and Go" to the Classroom

SALT LAKE CITY SCHOOL DISTRICT, cont.

	SY 2014-15	SY 2015-16	SY 2016-17	SY 2014-15	SY 2015-16	SY 2016-17	SY 2014-15	SY 2015-16	SY 2016-17	SY 2014-15	SY 2015-16	SY 2016-17
SCHOOL	% F/R			% F/R Students Participating in SBP			Offer Breakfast at No Charge			Alternative Service Model		
NEWMAN ELEMENTARY	73.64%	74.09%	75.85%	46.5	49.6	41.4						
NIBLEY PARK ELEMENTARY	60.63%	59.30%	59.12%	45.9	39.3	33.4						
NORTH STAR ELEMENTARY	86.89%	84.10%	83.25%	32.4	33.5	34.2						
NORTHWEST MIDDLE	87.79%	88.99%	88.29%	29.9	34.6	30.6						
PARKVIEW ELEMENTARY	85.60%	86.80%	82.26%	51.9	45.2	40.5						
RILEY ELEMENTARY	90.17%	90.73%	95.75%	47.0	59.9	76.3					"Grab and Go" to the Classroom	"Grab and Go" to the Classroom
ROSE PARK ELEMENTARY	83.37%	84.81%	91.49%	35.3	32.9	65.2						"Grab and Go" to the Classroom
SALT LAKE CENTER FOR SCIENCE EDUCATION	46.82%	42.25%	39.80%	52.2	44.5	46.2						
UINTAH ELEMENTARY	11.19%	11.42%	10.96%	50.7	49.1	47.0						
WASATCH ELEMENTARY	28.26%	21.95%	20.22%	39.2	53.0	49.6						
WASHINGTON ELEMENTARY	79.35%	76.80%	71.59%	56.2	48.1	76.8						"Grab and Go" to the Classroom
WEST HIGH	59.29%	63.43%	56.88%	29.2	33.2	37.8						
WHITTIER ELEMENTARY	63.56%	64.82%	59.89%	36.9	38.9	36.9						
TOTAL	60.86%	60.08%	57.37%	43.4	44.6	47.5	2	2	2	0	4	6

SAN JUAN SCHOOL DISTRICT

	SY 2014-15	SY 2015-16	SY 2016-17	SY 2014-15	SY 2015-16	SY 2016-17	SY 2014-15	SY 2015-16	SY 2016-17	SY 2014-15	SY 2015-16	SY 2016-17
SCHOOL	% F/R			% F/R Students Participating in SBP			Offer Breakfast at No Charge			Alternative Service Model		
ALBERT R LYMAN MIDDLE	78.71%	78.71%	60-69%	26.2	28.7	29.7	Community Eligibility Provision	Community Eligibility Provision	Community Eligibility Provision			
BLANDING ELEMENTARY	78.53%	63.70%	60-69%	28.5	29.2	32.0	Community Eligibility Provision	Community Eligibility Provision	Community Eligibility Provision		Nudge	
BLUFF ELEMENTARY	81.15%	≥98%	≥98%	44.3	51.1	60.4	Community Eligibility Provision	Community Eligibility Provision	Community Eligibility Provision		Nudge	
LA SAL ELEMENTARY	≥80%	N<10	N≤10	85.6	94.7	100.6	Community Eligibility Provision	Community Eligibility Provision	Community Eligibility Provision		Nudge	
MONTEZUMA CREEK ELEMENTARY	79.68%	≥98%	≥98%	74.3	70.2	63.2	Community Eligibility Provision	Community Eligibility Provision	Community Eligibility Provision		Nudge	
MONTICELLO ELEMENTARY	78.91%	37.60%	30-39%	59.5	57.5	56.9	Community Eligibility Provision	Community Eligibility Provision	Community Eligibility Provision		Nudge	
MONTICELLO HIGH	78.24%	24.10%	20-29%	37.5	44.1	40.9	Community Eligibility Provision	Community Eligibility Provision	Community Eligibility Provision			
MONUMENT VALLEY HIGH	79.55%	≥98%	≥98%	45.7	45.3	44.3	Community Eligibility Provision	Community Eligibility Provision	Community Eligibility Provision			
NAVAJO MOUNTAIN HIGH	70.79%	≥90%	≥90%	60.4	58.1	58.5	Community Eligibility Provision	Community Eligibility Provision	Community Eligibility Provision			
SAN JUAN HIGH	77.99%	50.90%	50-59%	34.8	44.5	47.0	Community Eligibility Provision	Community Eligibility Provision	Community Eligibility Provision			
ÉBII'NIDZISGAI ELEMENTARY	76.54%	≥99%	≥98%	68.0	66.7	57.0	Community Eligibility Provision	Community Eligibility Provision	Community Eligibility Provision		Nudge	
WHITEHORSE HIGH	77.85%	≥98%	≥98%	51.8	44.0	43.5	Community Eligibility Provision	Community Eligibility Provision	Community Eligibility Provision			
TOTALS	77.99%	70.69%	70.29%	51.4	52.8	52.8	12	12	12	0	6	0

SEVIER SCHOOL DISTRICT

	SY 2014-15	SY 2015-16	SY 2016-17	SY 2014-15	SY 2015-16	SY 2016-17	SY 2014-15	SY 2015-16	SY 2016-17	SY 2014-15	SY 2015-16	SY 2016-17
SCHOOL	% F/R			% F/R Students Participating in SBP			Offer Breakfast at No Charge			Alternative Service Model		
ASHMAN ELEMENTARY	52.68%	53.80%	47.96%	32.5	37.8	35.8						
CEDAR RIDGE HIGH	60.71%	62.96%	60.69%	NA	NA	NA						
KOOSHAREM ELEMENTARY	30.39%	40.49%	32.50%	NA	NA	NA						
MONROE ELEMENTARY	47.79%	47.76%	50.41%	44.7	45.1	47.1						
NORTH SEVIER HIGH	38.46%	37.63%	36.67%	47.7	45.1	46.0						
NORTH SEVIER MIDDLE	46.43%	48.22%	49.21%	28.7	35.6	40.7						
PAHVANT ELEMENTARY	54.34%	53.94%	52.53%	33.2	35.6	31.7						
RED HILLS MIDDLE	44.90%	42.06%	40.84%	24.5	19.3	23.6						
RICHFIELD HIGH	37.28%	37.37%	34.87%	34.7	45.5	31.2						
SALINA ELEMENTARY	55.65%	50.31%	50.66%	29.5	32.8	36.5						
SOUTH SEVIER HIGH	41.48%	43.31%	41.03%	45.7	41.3	38.8						
SOUTH SEVIER MIDDLE	44.67%	44.55%	42.81%	24.9	23.2	18.3						
TOTALS	46.41%	47.45%	40.45%	34.6	36.1	35.0	0	0	0	0	0	0

SOUTH SANPETE SCHOOL DISTRICT

	SY 2014-15	SY 2015-16	SY 2016-17	SY 2014-15	SY 2015-16	SY 2016-17	SY 2014-15	SY 2015-16	SY 2016-17	SY 2014-15	SY 2015-16	SY 2016-17
SCHOOL	% F/R			% F/R Students Participating in SBP			Offer Breakfast at No Charge			Alternative Service Model		
EPHRAIM ELEMENTARY	56.35%	54.72%	55.08%	28.4	32.2	32.6						
EPHRAIM MIDDLE	48.84%	53.47%	49.51%	NA	NA	NA						
GUNNISON VALLEY ELEMENTARY	59.30%	56.69%	60.68%	43.7	44.2	39.9						
GUNNISON VALLEY HIGH	51.18%	45.80%	41.14%	NA	NA	NA						
GUNNISON VALLEY MIDDLE	57.20%	52.50%	44.72%	22.3	25.1	38.0						
MANTI ELEMENTARY	62.02%	63.03%	59.24%	43.1	40.7	40.9						
MANTI HIGH	45.65%	43.37%	36.45%	NA	NA	NA						
TOTALS	54.36%	52.80%	49.19%	34.4	35.5	37.9	0	0	0	0	0	0

SOUTH SUMMIT SCHOOL DISTRICT

	SY 2014-15	SY 2015-16	SY 2016-17	SY 2014-15	SY 2015-16	SY 2016-17	SY 2014-15	SY 2015-16	SY 2016-17	SY 2014-15	SY 2015-16	SY 2016-17
SCHOOL	% F/R			% F/R Students Participating in SBP			Offer Breakfast at No Charge			Alternative Service Model		
SOUTH SUMMIT ELEMENTARY	25.54%	24.10%	18.81%	19.0	24.9	19.1						
SOUTH SUMMIT HIGH	19.13%	16.86%	16.15%	NA	62.4	29.4						"Grab and Go"
SOUTH SUMMIT MIDDLE	21.96%	22.81%	18.56%	NA	NA	9.1						"Grab and Go"
TOTALS	22.21%	21.26%	18.00%	19.0	43.6	19.2	0	0	0	0	0	2

TINTIC SCHOOL DISTRICT

	SY 2014-15	SY 2015-16	SY 2016-17	SY 2014-15	SY 2015-16	SY 2016-17	SY 2014-15	SY 2015-16	SY 2016-17	SY 2014-15	SY 2015-16	SY 2016-17
SCHOOL	% F/R			% F/R Students Participating in SBP			Offer Breakfast at No Charge			Alternative Service Model		
EUREKA ELEMENTARY/TINTIC HIGH	47.74%	47.44%	35.78%	40.8	36.7	44.1						
TOTALS	47.74%	47.44%	35.78%	40.8	36.7	44.1	0	0	0	0	0	0

TOOELE SCHOOL DISTRICT

	SY 2014-15	SY 2015-16	SY 2016-17	SY 2014-15	SY 2015-16	SY 2016-17	SY 2014-15	SY 2015-16	SY 2016-17	SY 2014-15	SY 2015-16	SY 2016-17
SCHOOL	% F/R			% F/R Students Participating in SBP			Offer Breakfast at No Charge			Alternative Service Model		
ANNA SMITH ELEMENTARY	≥98%	54.20%	50-59%	100.0	55.4	64.4	Provision 3	Community Eligibility Provision	Community Eligibility Provision			
BLUE PEAK HIGH	41.28%	49.30%	45.61%	52.0	46.4	40.7						
CLARKE JOHNSON JR HIGH	31.31%	30.05%	27.66%	23.5	24.7	23.3						
COPPER CANYON ELEMENTARY	36.17%	40.58%	42.84%	38.8	43.8	46.0						
DUGWAY ELEMENTARY/HIGH	49.30%	39.71%	39.68%	57.6	65.3	71.3						
EAST ELEMENTARY	47.26%	43.15%	NA	34.5	31.8	NA						
GRANTSVILLE ELEMENTARY	38.51%	41.03%	39.20%	33.1	34.0	34.0						
GRANTSVILLE HIGH	24.64%	19.62%	24.44%	25.9	26.7	28.3						
GRANTSVILLE JR HIGH	31.05%	28.31%	28.72%	33.5	27.2	27.6						
HARRIS ELEMENTARY	59.66%	59.27%	NA	55.2	48.5	NA						
IBAPAH ELEMENTARY	≥90%	80-89%	80-89%	100.0	82.5	76.0	Provision 3	Community Eligibility Provision	Community Eligibility Provision			
MIDDLE CANYON ELEMENTARY	38.08%	35.13%	32.81%	32.3	36.5	44.7						
NORTHLAKE ELEMENTARY*	65.40%	71.10%	54.65%	31.3	30.2	32.9			Community Eligibility Provision	"Grab and Go"	"Grab and Go"	
OLD MILL ELEMENTARY	NA	NA	NA	NA	NA	NA						
OVERLAKE ELEMENTARY	32.16%	25.49%	24.70%	47.3	37.4	35.0						
ROSE SPRINGS ELEMENTARY	20.08%	16.69%	17.34%	34.7	35.2	37.8						
SETTLEMENT CANYON ELEMENTARY	41.09%	42.11%	38.80%	44.3	46.1	41.0						
ST. MARGUERITE CATHOLIC SCHOOL	35.11%	41.96%	37.34%	NA	NA	NA						
STANSBURY ELEMENTARY	28.51%	24.42%	24.26%	28.1	25.9	26.2						
STANSBURY HIGH	23.85%	23.62%	22.15%	23.9	22.9	22.1						
STERLING ELEMENTARY	NA	NA	49.37%	NA	NA	40.5						
TOOELE HIGH	35.28%	36.42%	34.56%	25.5	25.3	27.2						
TOOELE JR HIGH*	45.15%	46.85%	46.45%	28.6	29.4	25.5				"Grab and Go"	"Grab and Go"	
VERNON ELEMENTARY	20-29%	40-49%	20-29%	NA	NA	NA						
WENDOVER HIGH	≥98%	51.00%	50-59%	100.0	42.6	29.3	Provision 3	Community Eligibility Provision	Community Eligibility Provision			
WEST ELEMENTARY	46.54%	45.82%	44.28%	53.4	43.5	42.9						
WILLOW ELEMENTARY	28.72%	27.27%	21.16%	40.9	40.0	37.4						
TOTALS	38.05%	38.83%	34.12%	45.4	39.2	38.8	3	3	4	2	2	0

UINTAH SCHOOL DISTRICT

	SY 2014-15	SY 2015-16	SY 2016-17	SY 2014-15	SY 2015-16	SY 2016-17	SY 2014-15	SY 2015-16	SY 2016-17	SY 2014-15	SY 2015-16	SY 2016-17
SCHOOL	% F/R			% F/R Students Participating in SBP			Offer Breakfast at No Charge			Alternative Service Model		
ASHLEY ELEMENTARY	43.91%	43.49%	59.73%	43.1	40.8	45.7						
DAVIS ELEMENTARY	35.59%	36.91%	48.22%	34.9	34.6	29.5						
DISCOVERY ELEMENTARY	29.06%	30.03%	40.77%	28.6	28.7	32.0						
EAGLE VIEW ELEMENTARY	65.13%	73.17%	76.79%	38.0	39.9	36.7						
LAPOINT ELEMENTARY	45.02%	58.10%	60.50%	50.0	44.0	42.4						
MAESER ELEMENTARY	27.81%	26.62%	36.71%	31.8	35.2	33.7						
NAPLES ELEMENTARY	44.37%	43.55%	59.78%	44.0	38.7	45.1						
UINTAH HIGH	24.34%	31.52%	36.25%	29.3	30.3	32.0				"Grab and Go"/Second Chance Breakfast	"Grab and Go"/Second Chance Breakfast	

UINTAH SCHOOL DISTRICT, cont.

	SY 2014-15	SY 2015-16	SY 2016-17	SY 2014-15	SY 2015-16	SY 2016-17	SY 2014-15	SY 2015-16	SY 2016-17	SY 2014-15	SY 2015-16	SY 2016-17
SCHOOL	% F/R			% F/R Students Participating in SBP			Offer Breakfast at No Charge			Alternative Service Model		
UINTAH MIDDLE SCHOOL (formerly VERNAL JUNIOR HIGH)	28.93%	40.43%	48.54%	10.8	19.8	18.3						
VERNAL MIDDLE	32.37%	39.88%	46.48%	17.0	17.9	18.0						
TOTALS	37.65%	42.37%	47.51%	32.7	33.0	33.3	0	0	0	1	1	0

WASATCH SCHOOL DISTRICT

	SY 2014-15	SY 2015-16	SY 2016-17	SY 2014-15	SY 2015-16	SY 2016-17	SY 2014-15	SY 2015-16	SY 2016-17	SY 2014-15	SY 2015-16	SY 2016-17
SCHOOL	% F/R			% F/R Students Participating in SBP			Offer Breakfast at No Charge			Alternative Service Model		
HEBER VALLEY ELEMENTARY	51.41%	52.00%	51.68%	35.3	39.8	40.1						
J.R. SMITH ELEMENTARY	50.12%	48.89%	53.80%	44.2	39.3	44.4						
MIDWAY ELEMENTARY	32.06%	29.13%	28.41%	41.1	45.2	44.6						
OLD MILL ELEMENTARY	22.22%	25.33%	22.32%	28.6	35.7	37.8						
ROCKY MOUNTAIN MIDDLE	28.81%	28.77%	28.79%	30.1	23.7	31.1						
TIMPANOGAS INTERMEDIATE SCHOOL	34.06%	30.56%	31.48%	30.8	28.4	33.7						
WASATCH HIGH	25.61%	24.47%	23.49%	37.9	38.2	39.3						
TOTALS	34.90%	34.28%	30.95%	35.4	35.8	38.7	0	0	0	0	0	0

WASHINGTON SCHOOL DISTRICT

	SY 2014-15	SY 2015-16	SY 2016-17	SY 2014-15	SY 2015-16	SY 2016-17	SY 2014-15	SY 2015-16	SY 2016-17	SY 2014-15	SY 2015-16	SY 2016-17
SCHOOL	% F/R			% F/R Students Participating in SBP			Offer Breakfast at No Charge			Alternative Service Model		
ARROWHEAD ELEMENTARY	35.07%	29.51%	27.78%	41.7	47.7	43.3						
BLOOMINGTON ELEMENTARY	31.42%	31.81%	27.18%	33.0	27.7	22.3						
BLOOMINGTON HILLS ELEMENTARY	49.45%	43.42%	40.67%	37.9	40.6	40.0						
CORAL CANYON ELEMENTARY	63.32%	61.47%	60.62%	30.5	34.8	33.8						
CORAL CLIFFS ELEMENTARY	70.36%	69.67%	65.35%	39.2	36.3	33.0						
CRIMSON VIEW ELEMENTARY	14.07%	13.23%	13.48%	33.8	26.3	23.5						
DESERT HILLS HIGH	20.06%	14.87%	13.17%	NA	NA	NA						
DESERT HILLS MIDDLE	22.97%	18.05%	20.24%	14.2	16.6	11.2						
DIAMOND VALLEY ELEMENTARY	33.22%	31.74%	35.00%	34.5	39.9	41.3						
DIXIE HIGH	35.19%	33.39%	32.28%	36.9	36.3	37.5						
DIXIE MIDDLE	44.26%	41.06%	41.21%	23.5	26.5	27.7						
DIXIE SUN ELEMENTARY	77.68%	77.74%	73.17%	25.2	24.9	25.8						
ENTERPRISE ELEMENTARY	64.42%	57.79%	53.66%	31.6	32.9	22.0						
ENTERPRISE HIGH	45.67%	40.48%	40.22%	17.3	19.2	27.6						
FOSSIL RIDGE INTERMEDIATE	49.06%	49.61%	43.39%	28.3	27.6	41.9						
HERITAGE ELEMENTARY	67.56%	64.73%	60.69%	41.5	42.8	32.0						
HORIZON ELEMENTARY	31.54%	27.30%	25.33%	27.3	31.3	34.6						
HURRICANE INTERMEDIATE	54.19%	49.77%	46.60%	31.6	35.0	27.2						
HURRICANE ELEMENTARY	62.52%	63.13%	58.81%	29.8	33.1	31.1						
HURRICANE HIGH	39.60%	38.02%	36.11%	32.1	31.6	21.4						
HURRICANE MIDDLE	49.76%	46.83%	44.50%	24.6	22.0	26.9						
LAVA RIDGE INTERMEDIATE	51.81%	49.07%	45.64%	29.3	25.7	45.0						
LAVERKIN ELEMENTARY	65.20%	66.80%	63.43%	39.4	48.2	42.4						
LEGACY ELEMENTARY (formerly EAST)	78.68%	75.83%	77.95%	40.3	40.7	37.1						

WASHINGTON SCHOOL DISTRICT, cont.

	SY 2014-15	SY 2015-16	SY 2016-17	SY 2014-15	SY 2015-16	SY 2016-17	SY 2014-15	SY 2015-16	SY 2016-17	SY 2014-15	SY 2015-16	SY 2016-17
SCHOOL	% F/R			% F/R Students Participating in SBP			Offer Breakfast at No Charge			Alternative Service Model		
LITTLE VALLEY ELEMENTARY	16.56%	9.75%	9.49%	21.1	22.4	14.1						
MAJESTIC ELEMENTARY	NA	NA	NA	NA	NA	NA						
MILLCREEK HIGH*	63.52%	53.93%	55.30%	58.1	50.8	45.0				Breakfast Vending		Breakfast Vending
PANORAMA ELEMENTARY	53.70%	59.06%	51.82%	29.5	30.2	33.8						
PINE VIEW HIGH SCHOOL	36.23%	31.90%	29.28%	53.4	41.5	42.4						
PINE VIEW MIDDLE	46.53%	46.30%	38.40%	29.6	21.9	22.5						
RED MOUNTAIN ELEMENTARY	67.44%	61.80%	54.84%	32.8	35.0	37.0						
RIVERSIDE ELEMENTARY	30.71%	31.30%	31.09%	26.9	36.6	33.7						
SANDSTONE ELEMENTARY	69.44%	62.73%	64.43%	30.5	34.3	32.6						
SANTA CLARA ELEMENTARY	37.56%	37.32%	32.65%	34.9	31.9	32.4						
SNOW CANYON HIGH	33.42%	29.81%	28.95%	34.9	29.8	26.8						
SNOW CANYON MIDDLE	43.50%	41.57%	38.97%	17.3	18.9	19.4						
SPRINGDALE ELEMENTARY	50-59%	68.75%	76.36%	82.8	79.4	74.5						
SUNRISE RIDGE INTERMEDIATE	25.96%	19.29%	17.76%	28.6	36.0	26.4						
SUNSET ELEMENTARY	62.34%	62.92%	60.77%	33.8	32.7	30.9						
THREE FALLS ELEMENTARY	45.63%	42.97%	36.64%	42.7	43.2	43.6						
TONAQUINT INTERMEDIATE	51.29%	52.86%	50.68%	28.2	27.3	27.6						
WASHINGTON ELEMENTARY	66.07%	66.99%	60.26%	39.3	37.1	34.0						
WATER CANYON	79.89%	88.70%	77.66%	62.3	45.5	42.8				Community Eligibility Provision		
TOTALS	48.46%	46.74%	40.22%	34.4	34.2	32.9	0	0	1	1	0	1

WAYNE SCHOOL DISTRICT

	SY 2014-15	SY 2015-16	SY 2016-17	SY 2014-15	SY 2015-16	SY 2016-17	SY 2014-15	SY 2015-16	SY 2016-17	SY 2014-15	SY 2015-16	SY 2016-17
SCHOOL	% F/R			% F/R Students Participating in SBP			Offer Breakfast at No Charge			Alternative Service Model		
HANKSVILLE ELEMENTARY	60-69%	70-79%	70-79%	100.0	98.2	109.4						
LOA ELEMENTARY	46.93%	45.45%	42.59%	NA	NA	NA						
WAYNE HIGH	37.04%	35.76%	30.14%	NA	35.9	NA						
WAYNE MIDDLE	51.26%	49.54%	51.79%	NA	NA	NA						
TOTALS	40-45%	40-45%	40-45%	100.0	67.1	109.4	0	0	0	0	0	0

WEBER SCHOOL DISTRICT

	SY 2014-15	SY 2015-16	SY 2016-17	SY 2014-15	SY 2015-16	SY 2016-17	SY 2014-15	SY 2015-16	SY 2016-17	SY 2014-15	SY 2015-16	SY 2016-17
SCHOOL	% F/R			% F/R Students Participating in SBP			Offer Breakfast at No Charge			Alternative Service Model		
BATES ELEMENTARY	26.35%	24.85%	24.96%	35.9	30.6	24.3						
BONNEVILLE HIGH	35.75%	34.99%	32.77%	30.7	29.4	33.6						
BIRCH CREEK	NA	57.48%	57.48%	NA	NA	38.4						
CANYON VIEW	73.52%	75.10%	72.64%	NA	56.7	60.0						"Grab and Go"
CLUB HEIGHTS ELEMENTARY	75.30%	80.19%	NA	56.3	60.1	NA						
COUNTRY VIEW ELEMENTARY	38.19%	34.57%	35.34%	39.4	32.0	31.2						
FARR WEST ELEMENTARY	27.78%	25.06%	23.54%	33.8	33.8	30.0						
FREEDOM ELEMENTARY	36.11%	36.06%	31.60%	29.7	33.9	32.8						
FREMONT HIGH	20.05%	17.99%	15.59%	18.6	17.5	18.4						
GREEN ACRES ELEMENTARY	51.29%	51.04%	47.08%	36.8	33.7	34.3						
H. GUY CHILD ELEMENTARY	37.20%	35.35%	32.68%	39.8	33.6	30.8						
HOOVER ELEMENTARY	29.05%	32.35%	24.82%	30.9	38.5	31.1						

WEBER SCHOOL DISTRICT, cont.

	SY 2014-15	SY 2015-16	SY 2016-17	SY 2014-15	SY 2015-16	SY 2016-17	SY 2014-15	SY 2015-16	SY 2016-17	SY 2014-15	SY 2015-16	SY 2016-17
SCHOOL	% F/R			% F/R Students Participating in SBP			Offer Breakfast at No Charge			Alternative Service Model		
KANESVILLE ELEMENTARY	25.60%	23.01%	21.21%	28.8	27.1	22.9						
LAKEVIEW ELEMENTARY	62.97%	60.13%	57.98%	38.4	39.9	35.2						
LOMOND VIEW ELEMENTARY	17.12%	14.20%	13.94%	19.4	22.1	27.9						
MAJESTIC ELEMENTARY	34.01%	30.08%	23.00%	31.3	29.5	33.4						
MARLON HILLS ELEMENTARY	55.66%	55.71%	NA	41.3	37.5	NA						
MIDLAND ELEMENTARY	47.83%	47.66%	42.80%	25.8	24.2	25.3						
MUNICIPAL ELEMENTARY	54.74%	54.15%	58.89%	39.0	35.4	32.6						
NO. OGDEN ELEMENTARY	49.32%	44.76%	42.55%	31.5	33.2	31.1						
NORTH OGDEN JR HIGH	28.93%	27.33%	23.71%	41.5	17.5	14.4						
NORTH PARK ELEMENTARY	62.83%	58.02%	57.65%	47.4	47.8	42.9						
ORION JR HIGH	25.26%	23.80%	22.53%	20.5	21.6	21.6						
PIONEER ELEMENTARY	50.58%	44.86%	47.91%	44.6	40.3	46.0						
PLAIN CITY ELEMENTARY	26.34%	23.00%	22.43%	22.2	24.7	25.7						
RIVERDALE ELEMENTARY	54.25%	46.18%	50.11%	35.0	34.7	32.6						
ROCKY MOUNTAIN JR HIGH	22.37%	20.50%	18.46%	20.6	25.5	23.4						
ROOSEVELT ELEMENTARY	60.85%	54.01%	56.10%	36.2	37.1	37.3						
ROY ELEMENTARY	63.67%	59.61%	58.23%	42.4	38.2	33.4						
ROY HIGH*	38.37%	33.64%	30.46%	35.8	31.8	33.2				"Grab and Go"/Second Chance Breakfast		
ROY JR HIGH*	46.83%	46.25%	39.59%	46.5	32.2	33.5				"Grab and Go"/Second Chance Breakfast		
SAND RIDGE JR HIGH	50.44%	46.51%	42.43%	21.7	21.2	21.8						
SNOWCREST JR HIGH	15.88%	14.33%	10.87%	13.6	9.4	6.9						
SOUTH OGDEN JR HIGH	38.58%	37.52%	36.40%	27.4	30.7	25.8						
T.H. BELL JR HIGH	55.78%	52.31%	51.44%	30.0	27.8	26.7						
TWO RIVERS HIGH	52.29%	41.43%	50.22%	41.7	46.0	35.6						
UINTAH ELEMENTARY	33.49%	28.42%	27.67%	35.1	36.6	35.5						
VALLEY ELEMENTARY	20.87%	16.54%	12.83%	NA	NA	25.6						"Grab and Go"
VALLEY VIEW ELEMENTARY	53.17%	52.71%	49.45%	32.8	35.2	38.1						
WAHLQUIST JR HIGH	24.22%	23.40%	21.81%	15.1	18.9	18.4						
WASHINGTON TERRACE ELEMENTARY	65.00%	62.08%	61.06%	35.0	35.5	36.7						
WEBER HIGH	20.73%	18.10%	19.75%	26.2	27.1	28.0						
WEST HAVEN ELEMENTARY	46.45%	44.95%	43.97%	43.4	37.8	40.2						
WEST WEBER ELEMENTARY	31.07%	28.38%	25.71%	26.0	23.8	25.1						
TOTALS	37.42%	39.51%	32.52%	32.9	31.4	30.5	0	0	0	2	0	2

RESOURCES

In Utah

- Utah State Board of Education Child Nutrition Programs - <http://www.schools.utah.gov/cnp/>
- Utah Breakfast Expansion Team - <http://www.uah.org/projects-initiatives/utah-breakfast-expansion-team-ubet/>
- Utahns Against Hunger - <https://www.uah.org/our-work/child-nutrition>
- Granite School District – Breakfast in the Classroom video - <https://www.youtube.com/watch?v=O-L33DJuoYU>
- Ogden School District – Breakfast in the Classroom video - <https://www.youtube.com/watch?v=qPRtn1lbwqo>
- Salt Lake City School District – Grab and Go to the Classroom video - <https://youtu.be/HNOv2QiPOEk>

National

- Food Research & Action Center “Breakfast for Health” October 2016
<http://frac.org/research/resource-library/breakfast-for-health>
- Food Research & Action Center “Breakfast for Learning” October 2016
<http://frac.org/research/resource-library/breakfast-for-learning>
- Food Research & Action Center “Breakfast Blueprint: Breakfast After the Bell Programs Support Learning” July 2017
<http://frac.org/research/resource-library/breakfast-blueprint-breakfast-bell-programs-support-learning>
- Food Research & Action Center “School Breakfast Score Card 2016-2017 School Year” February 2018 Retrieved from
<http://frac.org/wp-content/uploads/school-breakfast-scorecard-sy-2016-2017.pdf>
- Food Research & Action Center “Secondary School Principals’ Breakfast After the Bell Toolkit” Spring 2017
<http://frac.org/research/resource-library/secondary-school-principals-breakfast-bell-toolkit>
- NEA Health Information Network “Breakfast in the Classroom: NEA Health Information Network School Breakfast Toolkit”
<http://neahealthyfutures.org/wpcproduct/breakfast-in-the-classroom-toolkit/>
- USDA Food and Nutrition Service “School Breakfast Program (SBP) - Discover School Breakfast Resource Materials”
<http://www.fns.usda.gov/sbp/discover-school-breakfast-resource-materials>



Breakfast Expansion Grants

Partners for Breakfast in the Classroom Grant: <http://breakfastintheclassroom.org/>

The Partners for Breakfast in the Classroom, a consortium of nutrition and education groups, are working in 10 states, including Utah, to boost breakfast participation through grant funds, technical assistance, and building stakeholder support.

The grant is available to help high-need schools and districts cover the upfront costs often associated with the startup and implementation of breakfast in the classroom and “grab and go” programs, such as purchasing equipment, outreach efforts to parents, program promotion, and other related expenses.

For more information about the grant, go to: www.breakfastintheclassroom.org or contact Marti Woolford at woolford@uah.org.

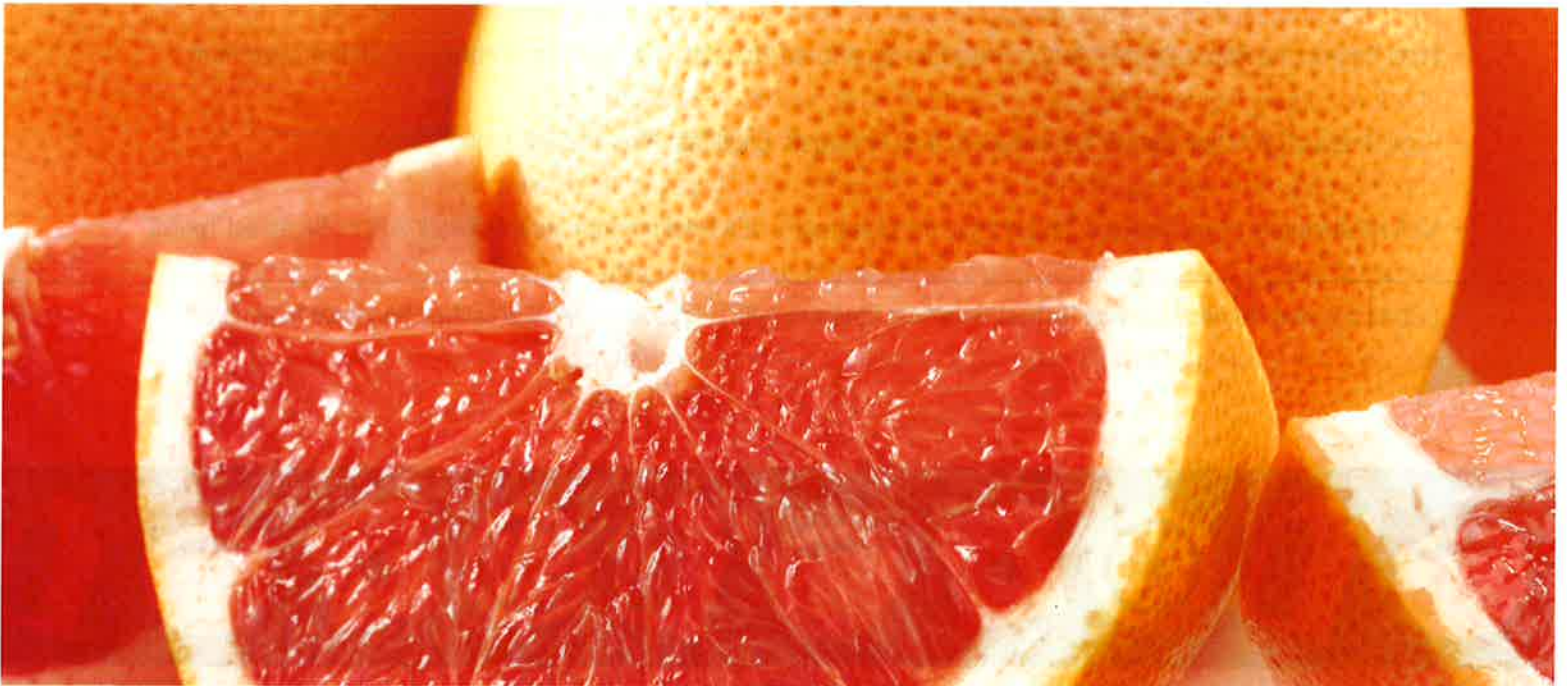
Dairy Council of Utah/Nevada Grant: <http://www.dairycouncilutnv.com/schools/>

The Dairy Council’s “Fuel Up to Play60” grants money to help schools expand their School Breakfast Program.

For more information about grant availability, contact Becky Low at Becky@dairycouncilutnv.com or (801) 694-3536.

Action for Healthy Kids School Breakfast Grant: <http://www.actionforhealthykids.org/tools-for-schools/apply-for-grants>

Action for Healthy Kids grants money to support increased breakfast participation with new alternative breakfast programs, including breakfast in the classroom or grab and go. Award amounts will be determined based on a school’s ability to provide breakfast at no charge for all students. To be eligible for the Start Up grant funding, schools must participate in the National School Breakfast Program and have a free and reduced percentage of 40% or greater. Schools previously funded for breakfast efforts will be invited to apply for Sustainability/Expansion grants of \$1,000.



REFERENCES

1. Woolford M, Church J, Spruance L, Stokes N, Isabella P. (2016). *Starting the Day Right. Best Practices for Increasing School Breakfast Participation in Utah Schools. 2014-2015 School Year.* Retrieved from: <https://www.uah.org/our-work/child-nutrition>
2. Utah State Board of Education. (2014). "Data & Statistics, Data Request Form." Retrieved from: <https://schools.utah.gov/data/request>
3. Food Research & Action Center. "School Breakfast Scorecard 2014-2015 School Year." February 2016. Retrieved from http://frac.org/pdf/School_Breakfast_Scorecard_SY_2014_2015.pdf
4. Food Research and Action Center. "School Breakfast Scorecard 2015-2016 School Year." February 2017. Retrieved from <http://frac.org/research/resource-library/school-breakfast-scorecard-2015-2016-school-year-february-2017>
5. Utah State Board of Education. (2015). "Data & Statistics, Data Request Form." Retrieved from: <https://schools.utah.gov/data/request>
6. Food Research & Action Center. "School Breakfast Scorecard 2016-2017 School Year." February 2018. Retrieved from <http://frac.org/wp-content/uploads/school-breakfast-scorecard-sy-2016-2017.pdf>
7. Utah State Board of Education. (2016). "Data & Statistics, Data Request Form." Retrieved from: <https://schools.utah.gov/data/request>
8. Centers for Disease Control and Prevention. "Health and Academic Achievement." May 2014. Retrieved from http://www.cdc.gov/healthyyouth/health_and_academics/pdf/health-academic-achievement.pdf
9. Food Research and Action Center. "Breakfast for Learning." October 2016. Retrieved from <http://frac.org/research/resource-library/breakfast-for-learning>
10. No Kid Hungry Share Our Strength, Center for Best Practices. "Increasing School Breakfast Participation." Retrieved from <https://bestpractices.nokidhungry.org/school-breakfast/increasing-school-breakfast-participation>
11. Food Research and Action Center. "FACTS: Community Eligibility Provision." No date. Retrieved from http://frac.org/pdf/community_eligibility_amazing_new_option_schools.pdf
12. Food Nutrition Service, United States Department of Agriculture. "School Meals Provisions 1, 2, and 3." May 2017. Retrieved from <https://www.fns.usda.gov/school-meals/provisions-1-2-and-3>





