



# Starting the Day Right

Best Practices for Increasing School  
Breakfast Participation in Utah Schools

2014–2015 School Year



# Contents

<b>Introduction</b> .....	1
<b>Benefits of School Breakfast</b> .....	3
<b>School Breakfast Program Basics</b> .....	4
<b>Strategies to Increase Participation in the School Breakfast Program</b> .....	7
Alternative Service Methods .....	7
Breakfast in the Classroom (BIC) .....	7
“Grab and Go” .....	9
Second Chance Breakfast .....	9
Breakfast on the Bus .....	10
Breakfast Vending .....	10
<b>Offer Breakfast at No Charge to All Students</b> .....	11
Universal Free Breakfast .....	11
Provisions 2 & 3 .....	11
Community Eligibility Provision .....	12
<b>Marketing</b> .....	13
Outreach .....	13
Nudge .....	14
<b>Steps to Increase Participation in the School Breakfast Program</b> .....	15
Recommendations for Utah’s School District Leaders .....	15
Recommendations for State of Utah Education Leaders .....	16
Recommendations for Utah State Legislators .....	16
<b>Conclusion</b> .....	17
<b>Resources</b> .....	18
<b>References</b> .....	19
<b>School Breakfast Participation Tables</b> .....	21





# Acknowledgments

This report was prepared by Marti Woolford, with assistance from Jessica Church, Lori Andersen Spruance, Nathan Stokes, and Patrice Isabella. This report was designed by Olivia Yeip and edited by Wendy Forbes and Donna Falkenberg.

The Utah Breakfast Expansion Team (UBET) was formed in 2014 in response to Utah's consistently low participation in the School Breakfast Program (SBP). UBET works to increase participation in SBP among low-income students. UBET is a collaboration of Utahns Against Hunger, Utah State Board of Education, Utah State University Extension—Food Sense, Utah State University Extension—Salt Lake County and Wayne County, Dairy Council of Utah Nevada, Utah Department of Health—Healthy Living Through Environment, Policy & Improved Clinic Care Program, Brigham Young University—Nutrition, Dietetics, and Food Science and Health Sciences, and Granite Education Association—NEA Healthy Futures.

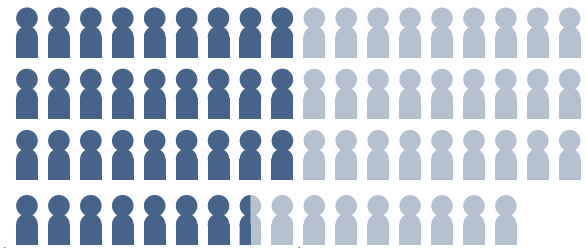
Utahns Against Hunger and UBET gratefully acknowledge major support for this report to Partners for Breakfast in the Classroom, an initiative funded by the Walmart Foundation.



# INTRODUCTION

Numerous studies show that eating school breakfast is essential to children's ability to learn, stay healthy, and perform well in school. Unfortunately, the School Breakfast Program (SBP) is vastly underutilized in Utah, meaning thousands of students may be starting the day underfed and undernourished. In recent years, there has been an increase in the number of Utah schools utilizing alternative breakfast models, resulting in an increase in school breakfast participation. These schools serve as important models for other schools and districts who want to increase their low school breakfast participation rates. This report describes alternative breakfast delivery models that can help increase school breakfast participation. In addition, it provides valuable school breakfast participation data that can help in assessing the success of current SBPs.

## School Breakfast Underutilized in Utah



During the 2014–2015 school year only 34.3 low-income Utah students participated in the program for every 100 low-income students who participated in the NSLP.

A successful SBP is one that reaches 70 low-income students for every 100 low-income students who participate in the NSLP.



**50,417** additional students would be starting the day with breakfast if Utah reached the 70-student benchmark.

SBP in Utah is severely underutilized. During the 2014–2015 school year only, 34.3 low-income Utah students (students who qualify for free or reduced-price lunch) participated in the program for every 100 low-income students who participated in the National School Lunch Program (NSLP).<sup>1</sup> When comparing SBP participation statewide to NSLP participation among low-income students, Utah ranks last in the nation for school breakfast participation.<sup>1</sup> The Food Research & Action Center (FRAC) has established that a successful SBP is one that reaches 70 low-income students for every 100 low-income students who participate in the NSLP. If Utah were to reach 70 low-income students, an additional 50,417

## Alternative Breakfast Models



### Breakfast in the Classroom (BIC)

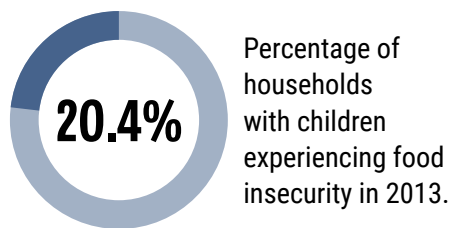
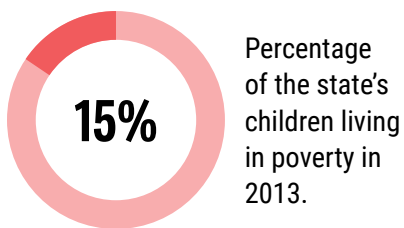
Reimbursable meals are delivered to the classroom and students eat at their desks during the first 10–15 minutes of the school day. BIC works best in elementary schools where students start the day in the same classroom with the same teacher each day, making delivery, counting, and claiming smoother for teachers and school nutrition staff.



### “Grab and Go”

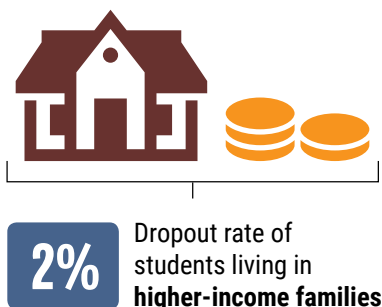
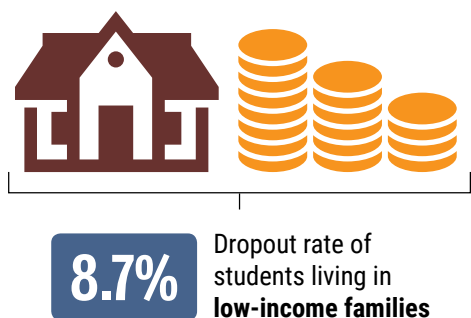
Key components (milk, fruit, and whole grain) of school breakfast are conveniently packaged so students can grab a reimbursable meal quickly from the cafeteria line or from carts elsewhere on school grounds. Depending on the school's rules, students can eat in the classroom, or somewhere else on campus. “Grab and go” works best in

students would be starting the day with school breakfast and Utah would receive an additional \$14,094,176 in annual federal reimbursement funding.<sup>2</sup> (See School Breakfast Participation Tables for individual school and district data.)



While Utah has a strong economy and low unemployment rate, many households with children still struggle with poverty and food insecurity. In 2013, 15 percent of the state's children were living in poverty and 20.4 percent of households with children were experiencing food insecurity.<sup>3,4</sup> Food insecurity occurs when people do not have access to enough food at all times for an active, healthy life.<sup>5</sup> Poverty and food insecurity lead to the potential for numerous negative consequences, especially for children.

Low-income households tend to purchase unhealthy foods that are higher in calories because they typically cost less.<sup>6</sup> This can negatively impact dietary intake even before hunger is present. Adverse impacts of food insecurity on dietary patterns (increased processed food, sugar-sweetened beverages, and fast food consumption, and decreased fruit and vegetable intake) among households with children are demonstrated in several studies.<sup>7,8,9</sup> An unhealthy diet, including inadequate consumption of fruits and vegetables, is a key determinant of weight status. In addition, childhood poverty can lead to an increased risk for a wide range of physical health problems. The American Psychological Association reports that children living in poverty are at greater risk for chronic conditions such as asthma, anemia, and pneumonia.<sup>10</sup> Lastly, behavioral and emotional problems are more prevalent among children living in families where hunger is an issue.<sup>10</sup>



The National Center for Education Statistics reports that in 2008, the dropout rate of students living in low-income families was about four and one-half times greater than the rate of children from higher-income families (8.7 percent versus 2.0 percent).<sup>11</sup> SBP combats negative consequences of food insecurity and child poverty by providing access to nutritious food for low-income students.

schools that may not be able to deliver food to each classroom due to multiple stairs or with other infrastructure obstacles. This model works well with all age groups, but for best results it is important to think through where the students will be eating. For example, with younger students, eating breakfast at their desks is the best method; whereas older students can eat while on their way to class.



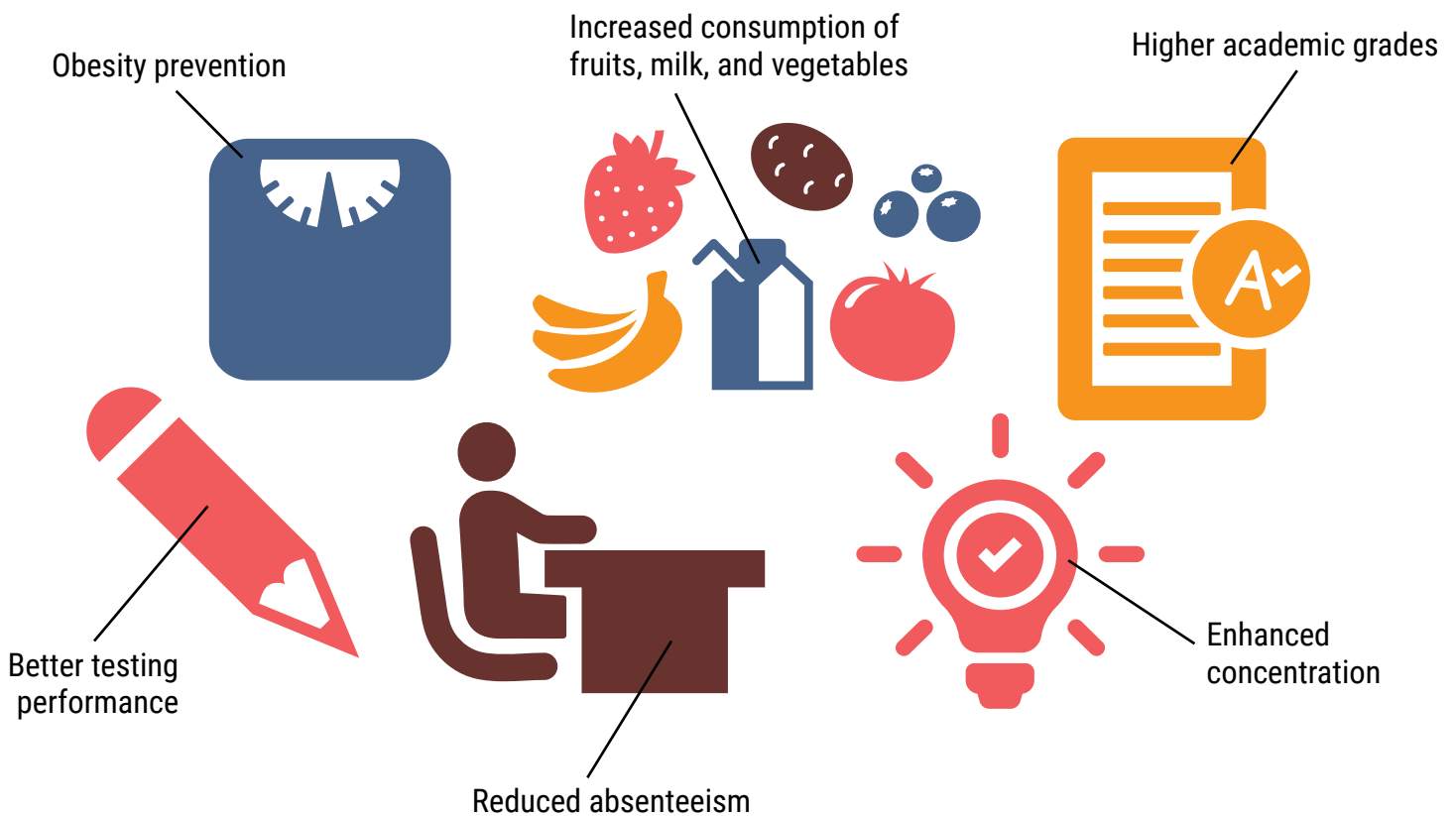
### Second Chance Breakfast

Usually implemented in middle and high schools, this method allows students time after their first period to obtain reimbursable breakfast from the cafeteria or from carts in the hallway, which they can eat in the classroom or cafeteria. Computerized systems ensure that children receive only one breakfast each day. Second chance breakfast works best with older students, middle school or high school aged, who may not be hungry in the morning.



# BENEFITS OF SCHOOL BREAKFAST

School breakfast is a minor investment with a major pay-off – providing all students the opportunity to make the most of each school day. The benefits of the School Breakfast Program (SBP) are multifaceted and well documented. SBP has health implications such as obesity prevention and increased consumption of fruits, milk, and vegetables.<sup>12</sup> Numerous studies show that eating a nutritious breakfast has a positive impact on cognitive functions in school, thus enhancing students' concentration and quality of school work. According to the Center for Disease Control and Prevention, participation in the SBP is associated with higher academic grades and standardized test scores, reduced absenteeism, and improved cognitive performance.<sup>12</sup> For example, children who skip breakfast are less able to differentiate among visual images, show increased errors, and have slower memory recall.<sup>13</sup> In addition, children who eat breakfast at school – closer to class and test-taking time – perform better on standardized tests than those who skip breakfast or eat breakfast at home.<sup>14</sup> Correspondingly, when less time passes between breakfast consumption and class, students demonstrate improved academic achievement.<sup>14</sup> Eating a healthy breakfast at school benefits those students with long commutes and ensures all students are adequately prepared to learn.

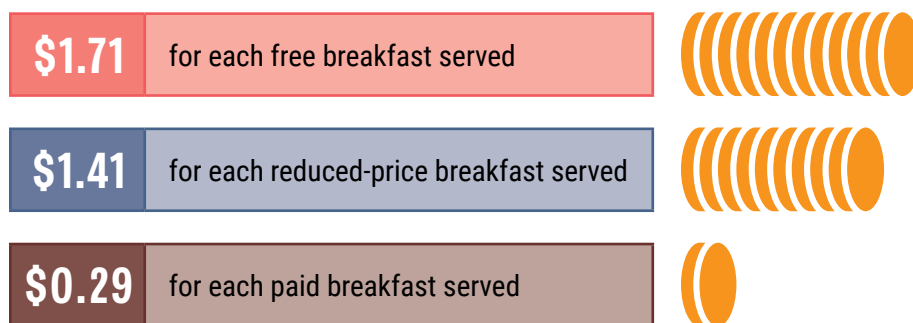


# SCHOOL BREAKFAST PROGRAM BASICS



The School Breakfast Program (SBP) is administered at the federal level by the United States Department of Agriculture (USDA) Food and Nutrition Service, and at the state level by the Utah State Board of Education. The federal government provides reimbursements to local school food authorities for each breakfast served.

For the 2016–2017 school year, schools will receive the following federal reimbursement:<sup>15</sup>



Severe need eligibility is limited to those schools in which 40 percent or more of the lunches were served free or at a reduced-price during the second preceding school year, and for which the regular breakfast reimbursement is insufficient to cover the costs of SBP.<sup>16</sup> Additional reimbursement is only paid for those breakfast meals claimed at the free and reduced-price rate.

## School Meal Applications

### Traditional School Meal Applications

School meal applications are one way students can qualify for free or reduced-price meals. Applications are sent home at the beginning of each school year, but parents may submit a household application anytime during the school year. The school or local education agency processes the information provided on the completed application to issue an eligibility determination.

See *Income Eligibility Guidelines* on Page 6.

### Online School Meal Applications

Many school districts have free and reduced-price school meal applications available online, usually located on the school district's web page. Online meal applications make it easy and convenient to apply for school meal benefits.

## Direct Certification

All children living in households receiving Supplemental Nutrition Assistance Program (SNAP) or Food Distribution Program on Indian Reservations (FDPIR) benefits, or Temporary Assistance for Needy Families (TANF) cash assistance – known as the Family Employment Program or FEP in Utah – can be “directly certified” for free school meals.<sup>17</sup> With direct certification, families no longer have to fill out a paper application to be processed by the school for determination of eligibility. Instead, agencies share information with schools, through data matching that must occur at least three times per year, to identify eligible children and automatically enroll them for free school meals. All school districts are required to directly certify children that receive SNAP.<sup>17</sup>

Certain homeless, migrant, and foster children are also eligible for meal program benefits and may be certified by one of the methods described above.<sup>17</sup> The eligibility of these students, however, does not extend to the rest of the household.

**School breakfasts must meet the meal pattern and nutrition standards based on the latest Dietary Guidelines for Americans. Currently, the following guidelines are required as part of the School Breakfast Program:<sup>18</sup>**

Offer fruit daily



Limit sodium based on age/grade group and limit saturated fat to less than 10 percent of total calories weekly



Offer grain items which are at least 50 percent whole grain



Require students to select a fruit or a vegetable as part of the reimbursable meal; and use a single food-based menu planning approach

Offer meals that meet specific calorie ranges for each age/grade group (ranges are narrower than in past guidelines)



Offer fluid milk that is fat-free (unflavored and flavored) and low-fat (unflavored only)



0 grams of trans fat

Prepare meals using food products or ingredients that contain zero grams of trans fat per serving





# 2016–2017 School Year Income Eligibility Guidelines<sup>19</sup>

Household Size	Reduced-price meals: 185%					Free meals: 130%				
	Annual	Monthly	Twice-monthly	Bi-weekly	Weekly	Annual	Monthly	Twice-monthly	Bi-weekly	Weekly
1	\$21,978	\$1,832	\$916	\$846	\$423	\$15,444	\$1,287	\$644	\$594	\$297
2	29,637	2,470	1,235	1,140	570	20,826	1,736	868	801	401
3	37,296	3,108	1,554	1,435	718	26,208	2,184	1,092	1,008	504
4	44,955	3,747	1,874	1,730	865	31,590	2,633	1,317	1,215	608
5	52,614	4,385	2,193	2,024	1,012	36,972	3,081	1,541	1,422	711
6	60,273	5,023	2,512	2,319	1,160	42,354	3,530	1,765	1,629	815
7	67,951	5,663	2,832	2,614	1,307	47,749	3,980	1,990	1,837	919
8	75,647	6,304	3,152	2,910	1,455	53,157	4,430	2,215	2,045	1,023
9	83,343	6,946	3,473	3,206	1,603	58,565	4,881	2,441	2,254	1,127
10	91,039	7,587	3,794	3,502	1,751	63,973	5,332	2,667	2,461	1,230
11	98,735	8,228	4,114	3,798	1,899	69,381	5,783	2,892	2,669	1,334
12	106,431	8,870	4,435	4,094	2,047	74,789	6,232	3,116	2,878	1,438
13	114,127	9,511	4,756	4,390	2,195	80,197	6,683	3,342	3,085	1,543
14	121,823	10,152	5,076	4,686	2,343	85,605	7,134	3,567	3,293	1,647
15	129,519	10,794	5,397	4,982	2,491	91,013	7,585	3,793	3,502	1,751
16	137,215	11,435	5,718	5,278	2,639	96,421	8,036	4,019	3,710	1,855
17	144,911	12,076	6,038	5,574	2,787	101,829	8,487	4,244	3,917	1,958
18	152,607	12,718	6,359	5,870	2,935	107,237	8,936	4,468	4,126	2,062
19	160,303	13,359	6,680	6,166	3,083	112,645	9,387	4,694	4,334	2,166
20	167,999	14,000	7,000	6,462	3,231	118,053	9,838	4,919	4,541	2,271
Each add'l family member add	7,696	642	321	296	148	5,408	451	226	208	104

Effective from July 1, 2016 to June 30, 2017

# STRATEGIES TO INCREASE PARTICIPATION IN THE SCHOOL BREAKFAST PROGRAM



## Alternative Breakfast Delivery Models to Increase Participation in the School Breakfast Program

**M**aking breakfast a part of the school day, known as breakfast after the bell, dramatically increases participation by making it convenient and accessible to all, no matter how or when students arrive at school. Breakfast after the bell service options include, but are not limited to, breakfast in the classroom, “grab and go” breakfast, and second chance breakfast. Whether breakfast is served in the classroom, the hallways, second period or on the school bus, the flexibility to eat during the morning in school is instrumental to ensure optimum participation. In Utah, the majority of schools offer breakfast, but serve it in the school cafeteria before the school day starts. This creates

several barriers that can result in low participation. For example, kids are required to arrive to school early in order to participate, but busy morning schedules at home and school bus schedules may prevent them from arriving in time to eat. When children are able to arrive to school in time to eat they may still face additional barriers; like the choice between playing and socializing with their friends or eating; or eating breakfast in the cafeteria where they face the stigma of “only the poor kids” eat breakfast<sup>20</sup>. Another strategy for increasing school breakfast participation is to eliminate the reduced-price category and offer these students breakfast for free. This may help to remove the financial barrier some students face. Additionally, offering breakfast for free to all students can increase participation; this strategy works especially well in schools with high free and reduced-price approval rates. Also, some families are unaware that their children’s school offers breakfast,<sup>21</sup> strategic outreach can help resolve this problem. Below are various strategies that, when implemented, can help increase school breakfast participation.

## Alternative Service Models



### Breakfast in the Classroom (BIC)

With this model, breakfast is delivered to the classroom either by school nutrition staff or designated students, and is served by the teacher or each student can pick up a meal before taking a seat at the start of the school day. BIC works best in elementary schools where students start the day in the same

classroom with the same teacher each day, making delivery, counting, and claiming smoother for teachers and school nutrition staff.

- BIC has emerged as an effective strategy to provide school breakfast to the large number of students who need it.

- BIC improves student achievement, diets, and behavior. For example, schools that offer breakfast in the classroom report decreases in discipline and psychological problems, fewer visits to school nurses and tardiness; increased student attentiveness and attendance; and generally improved learning environments.<sup>14</sup>
- BIC is the best option for schools with high rates of free and reduced-price meals and low school breakfast participation rates.
- After implementing BIC, survey principals, kitchen managers, teachers, students, and custodians to learn what is working well and what isn't. It is important to make changes quickly to ensure the success of BIC.
- After implementing, consider evaluating the program to learn the effects of BIC. Track changes in tardiness, chronic absenteeism, behavior referrals, and nurse visits. Track changes in average daily participation in SBP after implementation of BIC.

In school year 2014–2015, the following districts utilized BIC in some of their schools:

- CANYONS SCHOOL DISTRICT
- EMERY SCHOOL DISTRICT
- GRANITE SCHOOL DISTRICT
- OGDEN SCHOOL DISTRICT
- NEBO SCHOOL DISTRICT

**Breakfast in the Classroom Success Story  
Canyons School District**

Canyons School District received a USDA grant (passed through the Utah State Board of Education) to expand school breakfast participation. When looking at different school breakfast service models they considered switching to a universal breakfast model where all students eat breakfast for free. However, students were already not participating in breakfast in the cafeteria so Sebastian Varas, Director of Nutrition Services at Canyons School District, decided that breakfast in the classroom was the best service model to increase participation. Canyons tested the model at Copperview Elementary School because of the high rates of free and reduced-priced qualified students and where the

nutrition services department had a good relationship with the principal. During the planning process, Varas knew they had to make breakfast in the classroom easy for principals, teachers, and custodians or it would not be successful. Their priorities were to have BIC service last no longer than 10-15 minutes; to make the experience as spill-free as

*“Be creative! We weren’t afraid to tailor (our School Breakfast Program) to what would work for us. Keep your promise that it will work.”*

**- Sebastian Varas**  
Director of Nutrition Services at  
Canyons School District

possible; and to have a good understanding of the logistics of preparation and trash pick-up. After these priorities were set, the nutrition services department from the district trained the teachers on the process and informed parents of the change, which they did by mailing a post card to parents. “It is very important to make people confident that it will work,” said Sebastian Varas.

“A part of making this change work was to make tweaks along the way,” said Varas. For example, in the beginning of the test they had planned on changing the menu every month but when less food was being consumed and was starting to come back to the kitchen. The kitchen manager from Copperview Elementary went to every class and polled students to ask if they wanted certain food or not and they changed the menu accordingly.

When asked what advice he would give, Varas stated, “Be creative! We weren’t afraid to tailor [our School Breakfast Program] to what would work for us. Keep your promise that it will work.”



BIC increased SBP participation in the Canyons School District. Copperview Elementary School implemented breakfast in the classroom at the beginning of the 2014–2015 school year. At the time of implementation, over 85 percent of students were qualified for free or reduced-price lunch but only 20 percent were participating in SBP. Copperview Elementary ended the same school year with 98.9 percent of free and reduced-price qualified students eating school breakfast.



### “Grab and Go”

This model uses key components of school breakfast, conveniently packaged so students can grab a reimbursable meal quickly from the cafeteria line or from carts elsewhere on school grounds. Depending on the school’s rules, students can eat in the classroom, or somewhere else on campus.

- “Grab and go” works best in schools that may not be able to deliver food to each classroom due to multiple stairs or because of other infrastructure obstacles.



- Students participating in breakfast are counted by school nutrition staff when the meal is picked up either through the point of sale (POS) system, or from manual lists at each cart.
- After implementing “grab and go,” survey principals, kitchen managers, teachers, students, and custodians to learn what is working well and what isn’t. It is important to make changes quickly to ensure the success of “grab and go.”
- After implementing, consider evaluating the program to learn the effects of “grab and go.” Track changes in tardiness, chronic absenteeism, behavior referrals, and nurse visits. Track changes in average daily participation in SBP after implementation of “grab and go.”

In school year 2014–2015, the following districts utilized the “grab and go” model in some of their schools:

ALPINE SCHOOL DISTRICT
BEAVER SCHOOL DISTRICT
DAVIS SCHOOL DISTRICT
GARFIELD SCHOOL DISTRICT
GRANITE SCHOOL DISTRICT
KANE SCHOOL DISTRICT
NORTH SANPETE SCHOOL DISTRICT
OGDEN SCHOOL DISTRICT
PROVO SCHOOL DISTRICT
TOOELE SCHOOL DISTRICT
UINTAH SCHOOL DISTRICT
WEBER SCHOOL DISTRICT



### Second Chance Breakfast

This model allows students time after their first period to obtain breakfast from the cafeteria or carts in the hallway, which they then eat in the classroom or cafeteria. Computerized systems ensure that children receive only one breakfast each day.

- Second chance breakfast works best with older students, middle school or high school-aged, who often report not being hungry in the morning.
- A recent study found that students who regularly consumed breakfast at school, including a second chance breakfast, were more likely to have a healthy weight when compared to students who regularly skipped breakfast.<sup>22</sup>



- After implementing this model, survey principals, kitchen managers, teachers, students, and custodians to learn what is working well and what isn't. It is important to make changes quickly to ensure the success of second chance breakfast.
- After implementing, consider evaluating the program to learn the effects of second chance breakfast. Track changes in tardiness, chronic absenteeism, behavior referrals, and nurse visits. Track changes in average daily participation in SBP after implementation of second chance breakfast.

In school year 2014–2015, the following districts utilized the second chance breakfast model in some of their schools:

**BOX ELDER SCHOOL DISTRICT**

**DAVIS SCHOOL DISTRICT**

**UINTAH SCHOOL DISTRICT**

**WEBER SCHOOL DISTRICT**



### Breakfast on the Bus

Bus schedules can make it hard for students to participate in SBP when it is served in the cafeteria before the school day starts. Breakfast on the bus makes the most of students' morning bus ride, especially on longer bus rides that might be up to an hour or more. In this method, food is stored in containers and served to students as they get on the bus.

- Breakfast on the bus may be a good fit if students spend more than 15 minutes on the bus, bus schedules do not leave enough time for students to eat in the cafeteria, and breakfast in the classroom has not been implemented.



### Breakfast Vending

Breakfast vending allows students to access a nutritious breakfast from a vending machine. Vending machines can be set up to offer free and reduced-priced options by linking them to the school's point of sale (POS) system; students can then use their student identification or personal identification number to pay without cash.

- Breakfast vending is a good fit in high schools where students may be arriving at different times throughout the morning. For example, staff can load machines at the end of the day to allow students arriving to school for early morning activities an opportunity to get breakfast before the cafeteria opens.
- Schools using breakfast vending machines report that their students enjoy having an option to by-pass the cafeteria environment.
- Vending machines can be used for other meal services like lunch, after school snack, or supper, too, with staff reloading options between meal services.

In school year 2014–2015, the following districts utilized vending machines for SBP:

**OGDEN SCHOOL DISTRICT**

**NEBO SCHOOL DISTRICT**

**WASHINGTON SCHOOL DISTRICT**

*These districts reported their high school vending machines' most popular breakfast item is breakfast parfaits with yogurt, granola, and fruit.*

# OFFER BREAKFAST AT NO CHARGE TO ALL STUDENTS

## Universal Free Breakfast

For schools with high free and reduced-price meal eligibility, offering breakfast for free to all children may be a financially viable way to ensure more children access a healthy breakfast. Any service model can be used with universal breakfast. Students attending schools that offer breakfast free to all students are more likely to consume a nutritionally substantive breakfast and to consume significantly more calcium, magnesium, phosphorus, fruit, and dairy products at breakfast, when compared to students from schools with a traditional school breakfast program.<sup>13</sup>

- **Nonpricing:** No fees are collected from students, while schools continue to receive reimbursements for the meals served under the three-tier federal fee categories (free, reduced-price, and paid).<sup>1</sup>

In school year 2014–2015, the following districts utilized universal free breakfast in either some of their schools or districtwide:

BOX ELDER SCHOOL DISTRICT

CARBON SCHOOL DISTRICT

EMERY SCHOOL DISTRICT

LOGAN SCHOOL DISTRICT

NEBO SCHOOL DISTRICT



### Universal Free Breakfast Success Story

In 2014, the Logan School District began offering school breakfast free of charge to all of its students. This change resulted in school breakfast participation nearly doubling at

*"We went from around 2 percent paid students eating breakfast to around 15-20 percent. This helped reduce the stigma that school breakfast was only for the poor. Many students enjoy eating breakfast at school now."*

**- Paul Guymon**  
Child Nutrition Coordinator at  
Logan School District

several Logan schools. "We went from around 2 percent paid students eating breakfast to around 15–20 percent. This helped reduce the stigma that school breakfast was only for the poor. Many students enjoy eating breakfast at school now." said Paul Guymon, Child Nutrition Coordinator at Logan School District.

## Provisions 2 & 3

Provisions 2 and 3 are federal School Breakfast Program (SBP) and National School Lunch Program (NSLP) options

for schools to reduce the paperwork burden and simplify the logistics of operating school meal programs. Under both provisions, institutions may provide free meals claimed by free, reduced-price, and full-pay percentages established in a base year. This minimizes the burden of collecting applications and tracking and verifying school meal data every year.

Any school that participates in NSLP or SBP may qualify for Provision 2 or 3. These provisions may be a good strategy if a school has a high percentage of low-income students (75 percent or higher) or if substantial alternative funding is available to help cover food and labor costs.

### Under Provisions 2 & 3

*(Adapted from the Food Research & Action Center's. Provision 2 of the National School Lunch Act." 23)*

- All students receive free meals, regardless of family income level.
- Schools collect applications, record and track meal categories and conduct meal verifications once every four years, at most, leading to a reduction in administrative tasks for food service staff. Lunch tickets, personal identification numbers and identification cards for breakfast are no longer necessary since all students eat for free.
- The school pays the difference between the cost of providing the meals at no charge to all students and the amount of federal and state reimbursement for those meals. In most cases, the administrative savings and increased meal participation offset the added cost of providing universal free breakfast.
- Provisions 2 & 3 can be done with breakfast or lunch, by an individual school or districtwide. Experience has shown that schools save more in administrative and time costs if a provision is used for both breakfast and lunch.

## Community Eligibility Provision (CEP)

Community eligibility allows high-poverty schools to offer breakfast and lunch at no charge to all students, while eliminating the traditional school meal application process. Thousands of schools across the country have successfully implemented this new option and are seeing the many benefits of ensuring that all of their students have access to healthy school meals. Any district, group of schools in a district, or



individual school with 40 percent or more "identified students" – children eligible for free school meals who are already identified by other means than an individual household application – can choose to participate in CEP.

### Benefits of the CEP

*(Adapted from the Food Research & Action Center's "FACTS: Community Eligibility Provision" 24)*

- Lessens administrative work – schools no longer have to collect and verify school meal applications, allowing them to focus on feeding children.
- Increases participation – participating schools in the initial pilot states increased breakfast participation by 9.4 percent and lunch participation by 5.2 percent, a USDA study showed.
- Facilitates implementation of alternative breakfast service models – when schools don't have to collect fees or count each meal served by fee category, it simplifies implementation of breakfast in the classroom and "grab and go" service models that can boost participation further.
- Improves the financial viability of school nutrition programs – when participation increases, school districts can take advantage of economies of scale, and reinvest additional revenue to improve nutrition quality and provide staff training.
- Eliminates unpaid meal fees – when all children eat at no charge, the school district does not have to collect unpaid fees from families.

In school year 2014–2015, the following districts utilized CEP in either some of their schools or districtwide: 25

OGDEN SCHOOL DISTRICT
SALT LAKE CITY SCHOOL DISTRICT
SAN JUAN SCHOOL DISTRICT

# MARKETING

## Outreach

*(Adapted from the Food Research & Action Center's "School Breakfast Outreach" website."<sup>26</sup>)*

Another way to increase breakfast participation is to make sure parents are aware that their child's school participates in the School Breakfast Program (SBP). There are many ways to promote SBP but strategic and effective outreach efforts will have the biggest impact on awareness and participation:

- Use bright colored paper when including information about school breakfast in the packet of materials that goes to parents at the beginning of the school year.



- Feature easy-to-access and easy-to-find information about school breakfast on the school website that highlights the fact that qualifying for free or reduced-price meals includes breakfast, not just lunch.

- Promote breakfast frequently in emails, robo-calls (automated voicemails), on school district radio/TV stations when available, social media outlets, such as Facebook and Twitter, and other communications with parents and students.



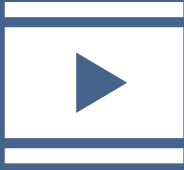
- Mail postcards to families to encourage participation.
- Conduct promotional activities (e.g., contests, celebrity appearances, special themes) that encourage students to participate.



- National School Breakfast Week is held in March and National School Lunch Week is held in October; these are great times to conduct a promotional activity and create special menu options.
- Enlist teachers and principals to encourage students to participate by providing information about SBP and effective strategies (see Nudge section on page 14) to encourage students to participate (e.g., modeling good eating behaviors, scheduling before-school activities in the cafeteria during breakfast).
- Provide school breakfast participation rates to principals, as they are often unaware of how few students participate in school breakfast (see School Breakfast Participation Tables for participation rates).
- Inform teachers by providing SBP in-services to make sure they know about the academic benefits to participation, barriers to participation, and ways that teachers can help encourage students to participate in breakfast.
- Write a press release announcing the implementation of a new school breakfast service model.
- Notify the Utah State Board of Education if your school or district implements an alternative school breakfast.
- Form student nutrition committees to taste new items and promote the program among peers (see Resources section on page 20 for more information).



- Enlist students in creating a marketing campaign promoting the SBP.



- For example, enlist students to create a video to help market your “grab and go” breakfast cart or vending machine. Involving students is a great way to bring attention to your breakfast program.

In school year 2014–2015, the following districts utilized a nudge method in some of their schools:

ALPINE SCHOOL DISTRICT

DUCHESNE SCHOOL DISTRICT

KANE SCHOOL DISTRICT

SAN JUAN SCHOOL DISTRICT

## Nudge

Another great way to increase participation in the School Breakfast Program (SBP) is the “nudge” method. Nudges are subtle acts of positive reinforcement and indirect suggestions that try to influence a student’s behavior<sup>27</sup> and are a great way to remind kids to eat breakfast at school. There can be a lot of distractions when students arrive to school like playing and/or socializing. Below are a few examples of successful nudge techniques:

- Have school staff greet students as they exit the school bus or enter the school and encourage them to go to the cafeteria to eat.



- Have school staff stand in a prominent entrance in the school and ask students if they have eaten breakfast yet. If they haven’t, direct them to where breakfast is being served.
- Have students greet students with a sign that reminds them to eat school breakfast.

### Nudge Method Success Story:

*San Juan School District implemented the CEP districtwide in 2014. They chose to continue serving breakfast in the cafeteria before the school day began because this service model worked well for them, especially in the remote elementary schools on the Navajo Reservation, where all of the kids arrive on the bus. At these schools, teachers meet the students at the bus and take them directly to the cafeteria. If the bus arrives late, they hold breakfast and don’t start the academic day until after breakfast. All schools in the district have a cold meal available in the cafeteria for any student who misses breakfast. In high school, when there is a behavior issue, the first question asked is whether the student had breakfast. If not, that student is sent to the cafeteria to eat.*

# STEPS TO INCREASE PARTICIPATION IN THE SCHOOL BREAKFAST PROGRAM

## Recommendations for Utah's School District Leaders

- **Make breakfast part of the school day.** Increase access to the School Breakfast Program by requiring schools with 70 percent or more students qualifying for free or reduced-price meals to offer breakfast after the school day's official start through alternative service models.

### ***Apply for a Partners for Breakfast in the Classroom Grant and/or the Dairy Council of Utah/Nevada Grant***

#### **Apply for a Partners for Breakfast in the Classroom Grant**

The Partners for Breakfast in the Classroom, a consortium of nutrition and education groups, are working in 10 states, including Utah, to boost breakfast participation through grant funds, technical assistance, and building stakeholder support.

The grant is available to help high-need schools and districts cover the upfront costs often associated with the startup and implementation of breakfast in the classroom and "grab and go" programs, such as

purchasing equipment, outreach efforts to parents, program promotion, and other related expenses.

For more information about the grant, go to: [www.breakfastintheclassroom.org](http://www.breakfastintheclassroom.org) or contact Marti Woolford at [woolford@uah.org](mailto:woolford@uah.org).

#### **Apply for a Dairy Council of Utah/Nevada Grant**

The Dairy Council grants money to help schools expand their School Breakfast Program.

For more information about grant availability, contact Becky Low at [Becky@dairycouncilutnv.com](mailto:Becky@dairycouncilutnv.com) or (801) 694-3536.



- **Offer universal free breakfast.** To help reach more children, provide breakfast at no charge to all students in schools with a free or reduced-price school meal eligibility rate of 70 percent or higher. High-poverty schools should utilize options like community eligibility and Provision 2 to support school breakfast expansion.
- **Be a school breakfast advocate/champion.** Educate all stakeholders – students, teachers, staff and parents – about the benefits of school breakfast. Utilize newsletters, online platforms, and social media to reach your target audience.



## Recommendations for State of Utah Education Leaders

- **Allow time spent during breakfast in the classroom (BIC) to count as instructional time.** Teachers and principals are often concerned that implementing BIC will interfere with instructional time. Clear guidance is needed to allow meal time to be considered as a part of instruction time. Other states, such as California, Indiana, Michigan, New Jersey, and Pennsylvania, have accomplished this through a memorandum from the state agency clarifying that breakfast must complement, not compete with, instructional time.<sup>28</sup>



- **Require State Agency database user entry forms (CNPweb) to include questions specific to alternative service models used in the School Breakfast Program.** This is needed to accurately capture all of the methods Utah schools are using to serve breakfast.
- **Track data.** Mandate that breakfast participation at the school level, as well as the manner in which breakfast is served, is tracked.
- **Increase the number of eligible schools implementing the Community Eligibility Provision (CEP) in order to expand school breakfast participation.** Employ new ways to encourage school districts with eligible schools to participate in CEP.

## Recommendations for Utah State Legislators

- **Require schools with 70 percent or more students qualifying for free or reduced-price meals to offer a universal, nutritious after-the-bell breakfast program with all-student access.** Colorado, the District of Columbia, New Mexico, Texas, Washington, and West Virginia have passed similar school breakfast legislation.<sup>28</sup>



- **Remove the reduced-price payment.** Relieve the school district from having to collect unpaid fees from families as well as the financial barrier students may face.

# CONCLUSION



**I**n order to reduce hunger and support the health and educational potential of Utah students, particularly for low-income children and adolescents, it is important for schools to make increased availability and participation in the School Breakfast Program one of their highest priorities.

**The majority of Utah schools offer school breakfast but participation in the program remains low. Adequate nutrition and freedom from hunger are absolutely essential for good health and academic achievement, and yet these goals are not always achievable for families struggling to make ends meet.**

The School Breakfast Program makes critical nutritional contributions to children's health and education; but in order for this program to meet the needs of students, it needs to be served when students are most likely to participate. Research shows that serving school breakfast during the school day is the best way to ensure all kids start the day with a full stomach, ready to learn.



# RESOURCES

## In Utah

- Utah State Board of Education Child Nutrition Programs <http://www.schools.utah.gov/cnp/>
- Utah Breakfast Expansion Team <http://www.uah.org/projects-initiatives/utah-breakfast-expansion-team-ubet/>
- Utahns Against Hunger – <https://www.uah.org>
- Granite School District – Breakfast in the Classroom video <https://www.youtube.com/watch?v=O-L33DJuoYU>
- Ogden School District – Breakfast in the Classroom video <https://www.youtube.com/watch?v=qPRtn1lbwqo&feature=youtu.be>

## National

- Food Research & Action Center “Breakfast for Health” Spring 2014 <http://frac.org/wp-content/uploads/2011/08/breakfastforhealth.pdf>
- Food Research & Action Center “Breakfast for Learning” Spring 2014 <http://frac.org/wp-content/uploads/2009/09/breakfastforlearning.pdf>
- Food Research & Action Center “School Breakfast Outreach” Website <http://frac.org/federal-foodnutrition-programs/school-breakfast-program/outreach/>
- Food Research & Action Center “School Breakfast Score Card 2014-2015 School Year. February 2016” [http://frac.org/pdf/School\\_Breakfast\\_Scorecard\\_SY\\_2014\\_2015.pdf](http://frac.org/pdf/School_Breakfast_Scorecard_SY_2014_2015.pdf)
- NEA Health Information Network “Breakfast in the Classroom: NEA Health Information Network School Breakfast Toolkit” <http://neahealthyfutures.org/wpcproduct/breakfast-in-the-classroom-toolkit/>
- USDA Food and Nutrition Service “School Breakfast Program (SBP) - Discover School Breakfast Resource Materials” <http://www.fns.usda.gov/sbp/discover-school-breakfast-resource-materials>

## Breakfast Expansion Grants

- Partners for Breakfast in the Classroom <http://breakfastintheclassroom.org/>
- Dairy Council of Utah Nevada <http://www.dairycouncilutnv.com/schools/>
- Action for Healthy Kids <http://www.actionforhealthykids.org/tools-for-schools/apply-for-grants>

# REFERENCES

1. Food Research & Action Center. (2016). *School Breakfast Scorecard 2014-2015 School Year*. Available: [http://frac.org/pdf/School\\_Breakfast\\_Scorecard\\_SY\\_2014\\_2015.pdf](http://frac.org/pdf/School_Breakfast_Scorecard_SY_2014_2015.pdf).
2. Food Research & Action Center. (2015). *Nutrition Program State Participation Calculators*. <http://frac.org/reports-and-resources/nutrition-program-state-participation-calculators/>.
3. Kids Count Data Center. *Children Living in Poverty*. Available: <http://datacenter.kidscount.org/data/tables/3215-children-living-in-poverty?loc=46&loct=2#detailed/2/any/false/36,868,867,133,38/any/9207,9206>.
4. Feeding America. (2015). *Map the Meal Gap 2015: Child Food Insecurity in Utah by County in 2013*. Available: [http://www.feedingamerica.org/hunger-in-america/our-research/map-the-meal-gap/2013/UT\\_AllCounties\\_CDs\\_CFI\\_2013.pdf](http://www.feedingamerica.org/hunger-in-america/our-research/map-the-meal-gap/2013/UT_AllCounties_CDs_CFI_2013.pdf).
5. Coleman-Jensen A, Rabbitt M P., Gregory Ch, and Singh A. (2015). *Household Food Security in the United States in 2014*. Available: <http://www.ers.usda.gov/publications/err-economic-research-report/err194.aspx>.
6. Darmon N, and Drewnowski A. (2015). *Contribution of food prices and diet cost to socioeconomic disparities in diet quality and health: a systematic review and analysis*. Available: <http://www.ncbi.nlm.nih.gov/pubmed/26307238>.
7. Widome R, Neumark-Sztainer D, Hannan PJ, Haines J, Story M. (2009). *Eating when there is not enough to eat: eating behaviors and perceptions of food among food-insecure youths*. Available: <https://www.ncbi.nlm.nih.gov/pubmed/19299675>.
8. Bruening M, MacLehose R, Loth K, et al. (2012). *Feeding a family in a recession: food insecurity among Minnesota parents*. Available: <https://www.ncbi.nlm.nih.gov/pmc/articles/PMC3349989/>.
9. Pilgrim A, Barker M, Jackson A, et al. (2012). *Does living in a food insecure household impact on the diets and body composition of young children? Findings from the Southampton Women's Survey*. Available: <https://www.ncbi.nlm.nih.gov/pubmed/21652519>.
10. The American Psychological Association. (ND). *Effects of Poverty, Hunger, and Homelessness on Children and Youth*. Available: <http://www.apa.org/pi/families/poverty.aspx>.
11. American Psychological Association. (ND). *Effect of Poverty, Hunger, and Homelessness on Children and Youth*. Available: <http://www.apa.org/pi/families/poverty.aspx>.
12. National Center for Educational Statistics. (2010). *Trends in High School Dropout and Completion Rates in the United States: 1972–2008*. Available: <https://nces.ed.gov/pubs2011/dropout08/findings1.asp>.
13. Centers for Disease Control and Prevention. (2014). *Health and Academic Achievement*. Available: [http://www.cdc.gov/healthyyouth/health\\_and\\_academics/pdf/health-academic-achievement.pdf](http://www.cdc.gov/healthyyouth/health_and_academics/pdf/health-academic-achievement.pdf).
14. Food Research & Action Center. (2014). *Breakfast for Health*. Available: <http://frac.org/wp-content/uploads/2011/08/breakfastforhealth.pdf>.
15. Food Research & Action Center. (2014). *Breakfast for Learning*. Available: <http://frac.org/wp-content/uploads/2009/09/breakfastforlearning.pdf>.

16. Department of Agriculture Food and Nutrition Services. (2016). *School Meals: Rates of Reimbursement. School Year 2016-2017*. Available: <http://www.fns.usda.gov/school-meals/rates-reimbursement>.
17. Department of Agriculture Food and Nutrition Services. (2005). *Eligibility for Severe Needs Rates for the School Breakfast Program*. Available: <http://www.fns.usda.gov/sites/default/files/SP23-2005.pdf>.
18. Department of Agriculture Food and Nutrition Services. (2001). *7 CFR Part 245.13 State Agencies and Direct Certification Requirements*. Available: <https://www.gpo.gov/fdsys/pkg/CFR-2016-title7-vol4/xml/CFR-2016-title7-vol4-sec245-13.xml>.
19. Department of Agriculture Food and Nutrition Services. (2012). *7 CFR Parts 210 and 220 Nutrition Standards in the National School Lunch and School Breakfast Programs; Final Rule*. Available: <https://www.gpo.gov/fdsys/pkg/FR-2012-01-26/pdf/2012-1010.pdf>.
20. Department of Agriculture Food and Nutrition Services. *Child Nutrition Programs-Income Eligibility Guidelines*. Available: <http://www.fns.usda.gov/fr-032316>.
21. Bailey-Davis L, Virus A, McCoy TA, Wojtanowski A, Vander Veur SS, Foster GD. (2013). *Middle school student and parent perceptions of government-sponsored free school breakfast and consumption: a qualitative inquiry in an urban setting*. Available: <https://www.ncbi.nlm.nih.gov/pubmed/23351628>.
22. Utah State Board of Education. (2015). *Data & Statistics*. Available: <http://schools.utah.gov/data/Reports/Child-Nutrition.aspx>.
23. Andersen L, Harrison C, Woolford M, Coombs C, LeBlanc H. *Parent Perceptions of School Breakfast*. (Unpublished data).
24. Wang S, Schwartz M.B., Shebl F.M., Read M, Henderson K.E., Ickovics J.R. (2016). *School breakfast and body mass index: a longitudinal observational study of middle school students*. Available: <http://onlinelibrary.wiley.com/doi/10.1111/ijpo.12127/full>.
25. Food Research & Action Center. (ND). *Provision 2 of the National School Lunch Act*. Available: <http://frac.org/newsite/wp-content/uploads/2009/05/provision2.pdf>.
26. Food Research & Action Center. (ND). *FACTS: Community Eligibility Provision*. Available: [http://frac.org/pdf/community\\_eligibility\\_amazing\\_new\\_option\\_schools.pdf](http://frac.org/pdf/community_eligibility_amazing_new_option_schools.pdf).
27. Food Research & Action Center. (ND). *School Breakfast Outreach*. Available: <http://frac.org/federal-foodnutrition-programs/school-breakfast-program/outreach/>.
28. No Kid Hungry Share Our Strength. (ND). *Breakfast Nudges*. Available: [https://bestpractices.nokidhungry.org/sites/default/files/resources/breakfast\\_nudges.pdf](https://bestpractices.nokidhungry.org/sites/default/files/resources/breakfast_nudges.pdf).
29. No Kid Hungry Share Our Strength, Center for Best Practices. (ND). *School Breakfast: Passed State Legislation*. Available: <https://bestpractices.nokidhungry.org/school-breakfast/school-breakfast-policy-0>.

# SCHOOL BREAKFAST PARTICIPATION TABLES

## About the Data

The Utah State Board of Education provided the free and reduced-price meal raw data and meal counts used in the report. All data are from school year 2014–2015. School breakfast participation rates were analyzed using the Food Research & Action Center’s School Breakfast Calculator.<sup>2</sup> The data has several limitations. All data collected is self-reported from school districts. Qualitative data is collected annually at the beginning of each school year and may not be updated when districts make changes after the beginning of the school year. Eligibility data is based on the last operating day of October for all schools, which may not be representative of the whole school year for some schools. Enrollment data used in calculations of average daily participation may include some students who may not have access to SBP and/or NSLP (for example, split kindergarten sessions that are only in session after lunch). Data collection on alternative service models began during school year 2014–2015 and may not be representative of actual service models during that school year. Where the data were unavailable in the examined school year, data from 2015–2016 were used. Several school districts also participated in a school breakfast expansion grant provided by Utah State Board of Education in 2014–2015. These districts are: Alpine, Beaver, Canyons, Carbon, Emery, Granite, Jordan, Kane, Nebo, North Sanpete, Ogden, Provo, Tooele, Washington, and Weber. It is also important to note that districts followed different implementation timelines under this grant, i.e., some districts may not have implemented the breakfast expansion project funded through this grant as of the last operating day in October of that school year, and others may be capturing increased participation in SBP as a result of earlier implementation. Charter schools, alternative schools residential child care centers, and schools for students with severe disabilities were not included in the analysis.

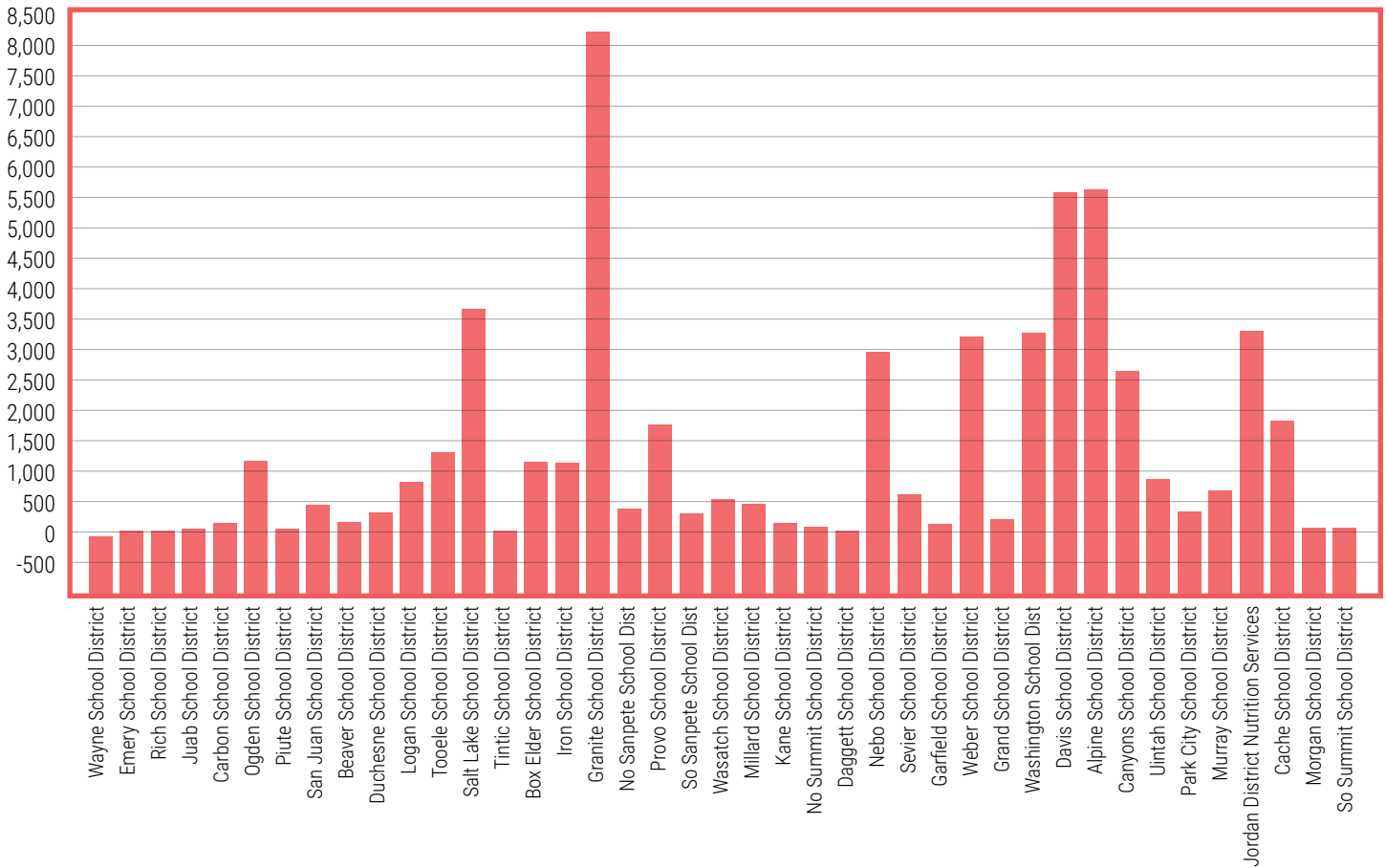
[www.uah.org/projects-initiatives/utah-breakfast-expansion-team-ubet](http://www.uah.org/projects-initiatives/utah-breakfast-expansion-team-ubet)

**Table 1. Rank of School Breakfast Participation by School District**

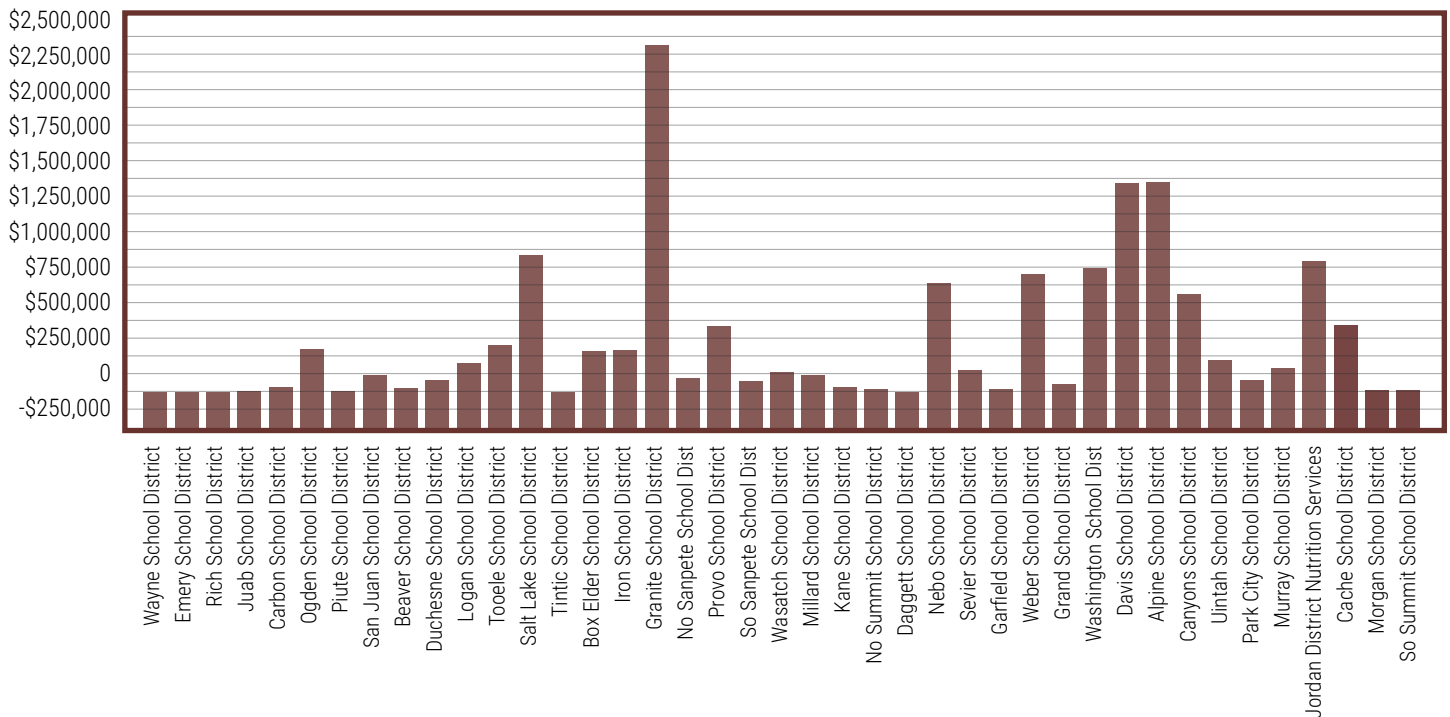
School District	Rank	School District	Rank	School District	Rank
Wayne School District	1	Box Elder School District	15	Weber School District	29
Emery School District	2	Iron School District	16	Grand School District	30
Rich School District	3	Granite School District	17	Washington School Dist	31
Juab School District	4	No Sanpete School Dist	18	Davis School District	32
Carbon School District	5	Provo School District	19	Alpine School District	33
Ogden School District	6	So Sanpete School Dist	20	Canyons School District	34
Piute School District	7	Wasatch School District	21	Uintah School District	35
San Juan School District	8	Millard School District	22	Park City School District	36
Beaver School District	9	Kane School District	23	Murray School District	37
Duchesne School District	10	No Summit School District	24	Jordan District Nutrition Services	38
Logan School District	11	Daggett School District	25	Cache School District	39
Tooele School District	12	Nebo School District	26	Morgan School District	40
Salt Lake School District	13	Sevier School District	27	So Summit School District	41
Tintic School District	14	Garfield School District	28		



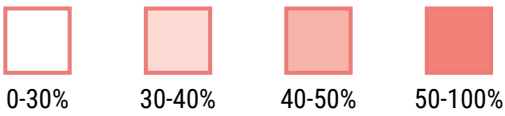
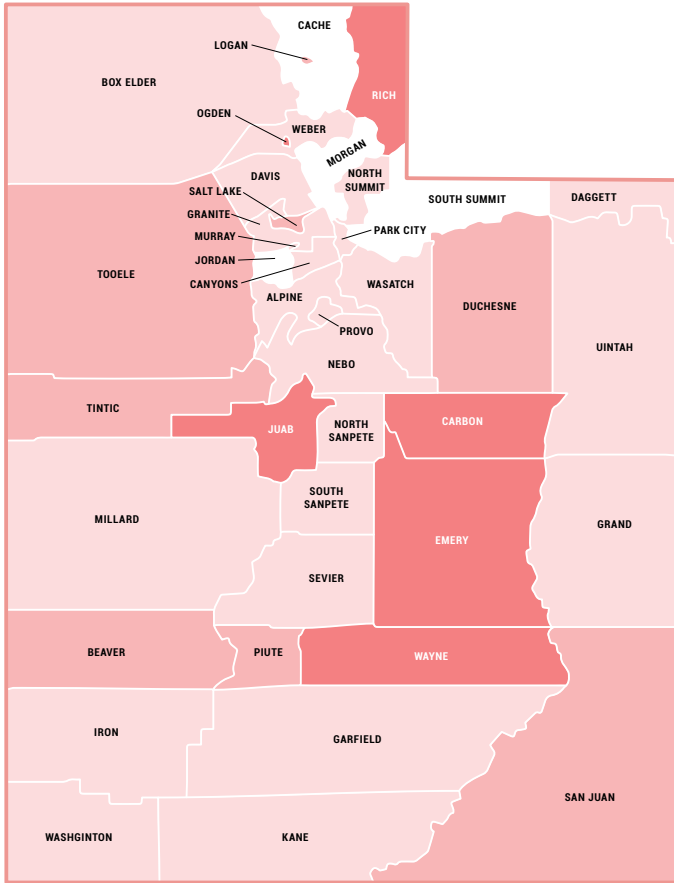
**Table 2. Additional Participation if 70 Low-Income Students Were Served School Breakfast Per 100 Served School Lunch – School Year 2014–2015**



**Table 3. Additional Federal Funding if 70 Low-Income Students Were Served School Breakfast Per 100 Served School Lunch – School Year 2014–2015**



**Map 1. Low-Income Students Eating School Breakfast Per 100 in School Lunch**



**Map 2. Percentage of Low-Income Students by School District**

